



**SINDH INTEGRATED EMERGENCY AND HEALTH SERVICES  
TENDER DOCUMENTS**

***REFURBISHMENT  
WORKS AT SIEHS  
STATIONS IN SINDH  
Tender # 84-2023***



**Tender Document No. 84-/2023**  
Refurbishment Works at SIEHS Stations in Sindh

TENDER NOTICE .....	4
COMPANY INTRODUCTION .....	6
INVITATION TO BID.....	7
SCOPE OF WORK .....	7
<b>SINDH INTEGRATED EMERGENCY &amp; HEALTH SERVICES REFURBISHMENT WORK NEW SITES</b>	<b>8</b>
<b>ANNEXURE "A" SIEHS – TANDO MUHAMMAD KHAN STATION</b> .....	<b>9</b>
<b>VOLUME "I" SIEHS – TANDO MUHAMMAD KHAN STATION</b> .....	<b>13</b>
<b>ANNEXURE "B" SIEHS – MITHI STATION</b> .....	<b>14</b>
<b>VOLUME "II" SIEHS – MITHI STATION</b> .....	<b>21</b>
<b>ANNEXURE "C" UMARKOT STATION</b> .....	<b>22</b>
<b>VOLUME "III" UMARKOT STATION</b> .....	<b>27</b>
<b>ANNEXURE "D" SIEHS – MIRPURKHAS STATION</b> .....	<b>28</b>
<b>VOLUME "IV" SIEHS – MIRPURKHAS STATION</b> .....	<b>33</b>
<b>ANNEXURE "E" SIEHS – TANDO ALLAHYAR STATION</b> .....	<b>34</b>
<b>VOLUME "V" SIEHS – TANDO ALLAHYAR STATION</b> .....	<b>39</b>
<b>ANNEXURE "F" SIEHS – MATIARI STATION</b> .....	<b>40</b>
<b>VOLUME "VI" SIEHS – MATIARI STATION</b> .....	<b>45</b>
<b>ANNEXURE "G" SIEHS – SANGHAR STATION</b> .....	<b>46</b>
<b>VOLUME "VII" SIEHS – SANGHAR STATION</b> .....	<b>51</b>
<b>ANNEXURE "H" SIEHS – SEHWAN STATION</b> .....	<b>52</b>
<b>VOLUME "VIII" SIEHS – SEHWAN STATION</b> .....	<b>56</b>
<b>ANNEXURE "I" SIEHS – DADU STATION</b> .....	<b>57</b>
<b>VOLUME "IX" SIEHS – DADU STATION</b> .....	<b>64</b>
<b>ANNEXURE "J" SIEHS – NAUSHAHRO FEROZE STATION</b> .....	<b>65</b>
<b>VOLUME "X" SIEHS – NAUSHAHRO FEROZE STATION</b> .....	<b>71</b>
<b>ANNEXURE "K" SIEHS – KHAIRPUR (HINGORJA) STATION</b> .....	<b>72</b>
GENERAL TERMS & CONDITIONS.....	77
INSTRUCTIONS TO BIDDERS.....	79
BID PRICE.....	81



**SINDH INTEGRATED EMERGENCY AND HEALTH SERVICES  
TENDER DOCUMENTS**

**REFURBISHMENT  
WORKS AT SIEHS  
STATIONS IN SINDH  
Tender # 84-2023**

SINGLE STAGE – ONE ENVELOPE PROCEDURE .....	84
POST BID SUBMISSION .....	84
PENALTY.....	87
TERMINATION & CANCELATION OF CONTRACT .....	88
COST OF TENDERING .....	89
VENDOR INFORMATION FORM .....	92
<u>ANNEXURE A</u> .....	98
<u>GENERAL TERMS AND CONDITIONS OF CONTRACT</u> .....	98

**TENDER NOTICE**

Published in Daily Dawn, Jang & Kawish newspapers on 31<sup>st</sup> May, 2023



**Guidelines for Bidder:**
**CHECKLIST**

<b>Single Stage - One Envelope Procedure</b>		
<b>S. No</b>	<b>Sequence of Documents (Must be in file using separators)</b>	<b>Check box</b>
1	Tender Fee in shape of a pay order in title of SINDH INTEGRATED EMERGENCY & HEALTH SERVICES - SIEHS	
2	Bid Security (% mentioned in bid data sheet), in shape of a pay order in title of SINDH INTEGRATED EMERGENCY & HEALTH SERVICES - SIEHS	
3	Financial Proposal	
4	Technical Proposal	
5	All pages of SIEHS tender documents have been signed & stamped	
6	Active Tax Payer Document (Must be printed from FBR / SRB portal and not more than 7 days before the submission of documents)	
7	NTN Certificate	
8	GST / SST (which ever applicable) - Status must be active and printout to be attached	
9	For last three years income tax return document or financial audit report	
10	Copy of CNIC of signatory of the Bid Form	
11	Affidavit on Rs.100 stamp paper / e-stamp paper that:  a. the bidding company is neither blacklisted nor suspended by any National / International, including Provincial and Federal Government.  b. the bidder has submitted the correct and complete information along with the bid/offer. If any document/information is found forged/engineered /fake/bogus at any stage, the bidder may be declared as Blacklisted in accordance with law and the bid security, performance guarantee and payment, if any may be forfeited	
12	Documents mentioned in evaluation criteria for scoring purpose	
13	Tender Fee in shape of a pay order in title of SINDH INTEGRATED EMERGENCY & HEALTH SERVICES - SIEHS	



## COMPANY INTRODUCTION

---

Sindh Integrated Emergency and Health Services (SIEHS), is a section 42 not-for-profit company formed in collaboration with the Government of Sindh. This service is a realization of Government of Sindh's commitment to strengthen the primary healthcare structure in Sindh through a public-private arrangement ensuring delivery of timely, effective, patient-focused ambulance and holistic healthcare services, free-of-cost.

SIEHS under its ambit operates and manages Pakistan's first and only ISO 9001:2015 certified ambulance service called Sindh Rescue and Medical Service (SRMS). SRMS operates according to international protocols, and is equipped with advanced medical equipment, life-saving drugs and qualified paramedics and nurses, providing immediate pre-hospital emergency care to those suffering with acute health trauma. The quality emergency services are available to all those who need it, across the social spectrum.

Our Tele Tabeeb and Tele Medicine platform is designed to support health care solutions and capacity building across the general health continuum, free-of-charge. With 24/7 access to doctors, clinical psychologists and healthcare experts, supported by updated algorithms for common diseases and on-going pandemic, we ensure that people in need receive timely diagnostic and counselling services, anytime. Our state-of-the-art call center allows callers to access coordinated advice and counselling services from across Pakistan, by dialing "1123".

SIEHS invites sealed bids on **Single Stage One Envelope Procedure** for the Refurbishment Works at various Stations from well reputed companies registered with federal / provincial tax authorities.

## INVITATION TO BID

Sindh Integrated Emergency and Health Services (SIEHS), invites sealed bids on **Single Stage One Envelope Procedure** for the Refurbishment Works at various Stations. For this well reputed companies registered with federal / provincial tax authorities available on List of Active Tax Payers" of FBR (for Income Tax) & SRB (For Sales Tax) websites.

Tender fee	Rs. 3,000/- (Rupees three thousand rupees only) Non-Refundable
Bidding procedure	Single Stage – One Envelope Procedure
Bid security	2% of the total bid value.
Deadline for submission of bids	15 <sup>th</sup> June, 2023 by 09:30am
Bid opening date and time	15 <sup>th</sup> June, 2023 at 10:00am

1. Bidding documents are available on the websites of Sindh Public Procurement Regulatory Authority (SPPRA) (<http://ppms.pprasindh.gove.pk>) and Sindh Integrated Emergency and Health Services (SIEHS), (<http://siehs.org/tender-documents/>) and bidder is required to enclose Pay Order / Demand Draft for the tender fee (Rs. 3,000/-) with their bid, which must be issued by a scheduled bank within the tender purchasing dates.
2. SIEHS may issue the clarifications or amendments in respect of the bidding documents which will be uploaded on the website, SIEHS will not be responsible of any confusion or misunderstanding in this regard.
3. In case of any unforeseen situation or government holiday resulting in closure of office on the date of opening, bids shall be submitted / opened on next working day at the given time and venue.
4. SIEHS reserves the right to reject any or all the bids subject to the relevant provisions of SPP Rules 2010 (Amended 2022)..

## SCOPE OF WORK

Infrastructure is a key pillar supporting the fundamental aim of promoting improved standards of care and wellbeing for all, together with a good experience of health care system. The purpose for invitation of bid is to develop the infrastructure of the facilities across the province of Sindh. For this we have identified some areas where some work need to be done to streamline our operational activities. Detailed scope of work is incorporated in annexures;

**SINDH INTEGRATED EMERGENCY & HEALTH SERVICES REFURBISHMENT WORK NEW SITES**

DESCRIPTION	LOCATIONS										
	TANDO MUHAMMAD KHAN	MITHI	UMARKOT	MIRPUR KHAS	TANDO ALLAHYAR	MATIARI	SANGHAR	SEHWAN	DADU	NAUSHEHRO FEROZE	KHAIRPUR
Detailed scope of work of sites incorporated in annexures Will be referred as Annexure "A", "B"...	A	B	C	D	E	F	G	H	I	J	K
Lighting fixtures, network points, CCTV points are incorporated in Drawing w.r.t locations Will be referred as Volume "I", "II", ....	I	II	III	IV	V	VI	VII	VIII	IX	X	-

Said scope of work contains the supply & installation of Sign Boards on various locations of SIEHS other than Karachi.



**ANNEXURE "A" SIEHS – TANDO MUHAMMAD KHAN STATION**

S. NO.	DESCRIPTION	QTY	UOM
<b>BOQ TANDO MUHAMMAD KHAN STATION REFURBISHMENT WORK - CIVIL, PLUMBING &amp; CARPENTARY WORK</b>			
1	Providing and fixing anti-skid Porcelain Tiles Flooring jointed in white cement and laid over bed of 1" to 2" thick grey cement concrete bed in ratio 1:2:4 i/c washing / filling of joints with white cement etc.: complete in all respect (Imported Premium Quality - Shabbier / Master) Tiles price range per square meter will be Rs. 600 to 800 inclusive all taxes	550	Sft
2	PAVER BLOCK flooring:- Providing and laying 60mm thick factory made 1st class cement concrete interlocking paver block of M -40 grade or 6000psi made by block making machine with strong vibratory compaction and of approved size and design/ shape laid in required colour and pattern over and including 50mm thick compacted bed of coarse sand, filling the joints with coarse sand etc. all complete as per the direction of SIEHS Nominated Person.	492	Sft
3	Providing and laying Class 'D' 1:3:6 cement concrete Solid Block Masonry wall 4" to 6" in thickness and above set in 1:6 cement SRC sand mortar in ground floor superstructure i/c racking of joints and curing, etc., complete. (Minimum crushing strength 1300-lbs/P.S.I) Brand (Lucky, Falcon or equivalent duly approved by SIEHS Nominated person	300	Cft
4	Plaster walls (1:4):- Providing and rendering 16mm thick cement mortar finish in double layer 1:4 (1 cement : 4 fine sand) using screened clean sand on internal surfaces of bricks or concrete surfaces including providing neeru finish to a thickness of about 1.5mm finished smooth with steel trowel including preparation of surface ,curing etc at all levels /heights & locations complete as specified and directed by SIEHS Nominated Person.	600	Sft
5	Plaster ceiling (1:4):- Providing and rendering 16mm thick cement mortar finish in double layer 1:4 (1 cement : 4 fine sand) using screened clean sand on internal surfaces of bricks or concrete surfaces including providing neeru finish to a thickness of about 1.5mm finished smooth with steel trowel including preparation of surface ,curing etc at all levels /heights & locations complete as specified and directed by SIEHS Nominated Person.	200	Sft

6	PLASTIC EMULSION: Removing or scraping of all type of paint from walls i/c removal rubbish materials from site, Applying 2 Coats of water base Plastic Emulsion Paint i/c primary coat of chalk and preparing base surface and filling where as required specifications etc. complete in all respects as per SIEHS authorized person (Nelson / Reliance / GOBIS or approved equivalent)	3500	Sft
7	Providing & Installation PVC Wall Paneling 8mm thick back side wall supporting with Aluminum/PVC fitting clip, Size of paneling height Standard height 9'-6" with PVC border finish (Supplier will provide sample, Approx. area 2300 Sqft).	2300	Sft
8	Removal of existing MS grill fence size 12'x10' & re-fixing with extension 10'x1'-6" (Fencing Picture is attached for reference)	1	L.S
9	Repair & paint of existing doors & Windows Like (Door Handles, Door lock replacement, Door Panel work - Cutting of door for glass fitting, Door Hinges Replacement & Aluminum Sheet application on door)	8	NOS
10	Provide supply fixing of wooden Door (3'x7') with GI 14 gauge (Chokhat) frame	5	NOS
11	Provide supply fixing of wooden Door (2'x7') with GI 14 gauge (Chokhat) frame	2	NOS
12	Repair & paint work of existing Wooden Windows	5	NOS
13	Fixing of Net on washroom and Kitchen Vent Size 2'x2' (4) & 2'x3' (1)	5	NOS
14	Net replacement of Existing windows (4' x 5') & Doors (3.5x7)ft includes mosquito proof net door repair	10	NOS
15	Providing and making of ambulance disinfecting area including water supply PVC line 4" dia 100 rft with 1Hp pressure pump & drainage system main hole chamber size 2'x2'x4' with MS grill 12"x12' for De watering and Installation of ambulance M.S.Angle iron ramp for ambulance washing purpose 14 gauge angle iron size 2" total length 7' X 2' High 1'-6" slope 4' X 2' Rest area 3' X 2'	1	L.S
16	Providing & Installation of Fiber Shade with 1 1/2" X 2" rectangular Iron framing mash size 3' X 3' Holding pillar 3" dia 16 gauge 10' height pipe with 2 mm UPVC wave sheet complete with red oxide & paint	250	Sft
17	Providing & fixing aluminum partition with door size 3'x7' & 5'x7' section 4" wide with 5mm /one side vision glass including lock, handle with all respect accessories etc complete of size 10'x8'	200	Sft

18	Providing & Installation of Fiber tank with all necessary fittings & connection 500 US Gallons L: 88 inch X W: 47 inch X H: 48 inch MASTER 5 year warranty	2	Each
19	WASHROOM FITTING PLUMBING SANITARY WORK:- Supply provide and fix material includes complete sanitary work plumbing shower set W.C waste net p trap u trap etc complete work as per technical specification & directed by by SIEHS Engineer in charge.	3	L/S
20	Providing labor for Bushes cutting & removal of debris from office to outside premises	1	L/S
<b>BOQ TANDO MUHAMMAD KHAN STATION REFURBISHMENT WORK - IT INFRASTRUCTURE</b>			
1	Passive Networking: Supply Cat6 (3M, Schneider equivalent) installation at both end (user IO and patch panel) conduit, conduit fitting, boxes, back boxes, termination & all necessary accessories and fitting to complete the work. Rack harnessing including data/ surveillance points testing and tagging. Dual face plate will be used in surveillance points and attendance device. Single face plate will be used in Desktop connections, printer point and supervisor desk. Three iron rod stand/ shade required for outdoor cams.	20	Nos.
2	Supply & Installation of Patch Panel - 24 Port	1	Nos.
3	Supply & Installation of PDU - 8 socket	2	Nos.
4	Providing & installation of Outdoor Weather shield protective cover for Camera	3	Nos.
<b>BOQ TANDO MUHAMMAD KHAN REFURBISHMENT WORK - ELECTRICAL</b>			
1	Light Control Switches : Six/Four Gang 10/13A switch face plate for lighting control with back box, pvc conducting fitting complete in all aspects	14	Nos.
2	Supply & Installation of MDB	1	No.
3	Supply & Installation of MCCB/TP 150 Amp (04 pole)(Breaker Schneider / Hager)	2	Nos.

4	Supply & Installation of 20Amp Breaker (Single Pole)(Breaker Schneider / Hager)	4	Nos.
5	Supply & Installation of 16 Amp Breaker (Single Pole)(Breaker Schneider / Hager)	6	Nos.
6	Supply & Installation of 10 Amp Breaker (Single Pole)(Breaker Schneider / Hager)	8	No.
7	Reorganize & modify existing distribution board as per total electrical load, including Neutral, Earth Bar & Indication Lamps	1	Job
8	Supply & Installation 13A 2pin switch socket outlet Clipsal/ Schneider/Orange or Equivalent	10	Nos.
9	Supply & Installation 13A multi / universal switch socket outlet clipsal/ Shinder/Orange or approved Equivalent	12	Nos.
10	Wiring for light and fans point 3/0.29 in channel patti (Pakistan Cables / Fast Cables/Newage or approved Equivalent)	26	Nos.
11	Wiring for mains with 2-7/.029 PVC wire on PVC casting and capping. (Pakistan Cables / Fast Cables/Newage or approved Equivalent)	6	Nos.
12	Wiring for main 2-7/0.44 PVC wire in casing capping	3	Nos.
13	Supply & installation of PVC conduit with accessories embed in wall / floor / ceiling or surface installed.	24	Nos.
14	04 Core 16mm <sup>2</sup> cable for main to MDB (Pakistan Cables / Fast Cables/Newage or approved Equivalent)	50	RFT
15	Light fixture LED ring holder lights. (Philips/Osaka/Tuff or approved equivalent)	20	Nos.
16	Modification in Existing DBs according to actual Electrical Load distribution.	1	Job
17	Supply & Installation of ceiling fans 56" (Pak Fan/Royal fan or approved Equivalent)	4	Nos.
18	Supply & Installation of ceiling bracket fan 22" (Pak Fan/Royal fan or approved Equivalent)	2	Each
19	Supply & Installation of Exhaust fan 12"x12" (Pak Fan/Royal fan or approved Equivalent)	3	Nos
20	Lights and board and electric fitting work for 2 wash room, (Switch - 2, Socket 1)	2	Nos

**VOLUME "I" SIEHS – TANDO MUHAMMAD KHAN STATION**



**ANNEXURE "B" SIEHS – MITHI STATION**

S. NO.	DESCRIPTION	QTY	UOM
<b>BOQ MITHI STATION REFURBISHMENT WORK - CIVIL, PLUMBING &amp; CARPENTARY WORK</b>			
1	Dismantling of Existing Block Masonry and disposal of rubbish materials by mean of any vehicle	100	Cft
2	Dismantling of Existing flooring /skirting i/c C.C layer and disposal of rubbish materials by mean of any vehicle	0	Cft
3	Providing and laying Class 'D' 1:3:6 cement concrete Solid Block Masonry wall 4" to 8" in thickness and above set in 1:6 cement sand mortar in ground floor superstructure i/c racking of joints and curing, etc, complete.(Minimum crushing strength 1300-lbs/P.S.I)		
3.1	100 mm Thick	150	Sq. ft
3.2	150 mm Thick	1400	Sq. ft
4	Cement Plaster in Ratio 1:6 (15 mm Thick) i/c floating coat of cement in proper design & profile on walls/beams & columns. This rate also i/c providing expanded metal at the joint of R.C.C. Members and block masonry where as required etc complete in all respect as per specification and drawings and approval of SIEHS authorized person	2950	Sq.ft
5	Removing or scraping oil and distemper from walls i/c removal rubbish materials from site,	1200	Sq.ft
6	Applying 2 Coats of Plastic emulsion Paint i/c primary coat of chalk and preparing base surface and filling where as required specifications etc complete in all respects as per SIEHS authorized person (Nelson / Reliance / GOBIS / Glamour)	1800	Sq.ft
6.1	In case of Grey structure - Applying 3 Coats of Plastic emulsion Paint i/c primary coat of chalk and preparing base surface and filling where as required specifications etc complete in all respects as per SIEHS authorized person (Nelson / Reliance / GOBIS / Glamour)	200	Sq.ft
6.2	Applying 2 Coats of weathershield Plastic emulsion Paint i/c primary coat of chalk and preparing base surface and filling where as required specifications etc complete in all respects as per SIEHS authorized person (Nelson / Reliance / GOBIS / Glamour)	1260	Sq.ft



6.3	In case of Grey structure - Applying 3 Coats of weathershield Plastic emulsion Paint i/c primary coat of chalk and preparing base surface and filling where as required specifications etc complete in all respects as per SIEHS authorized person (Nelson / Reliance / GOBIS / Glamour)	2400	Sq.ft
7	Preparing surface and painting Doors and Windows any type including edges (Iron or wooden or partially glazed).	280	Sq.ft
8	Providing & fixing cement paving block flooring having Size of Pavers,60mm thick & 100 X 200 Shape in a specified pattern and design with the combination of natural colour and colored blocks, having strength b/w 4000 lbs. / Sq.ft to 6000 lbs. / Sft over 2" thick compact bed of crush ash i/c filling the joints with river sand and also i/c proper compaction with compactor as per instruction given by SIEHS authorized person	3400	Sq.ft
9	Providing and fixing (elephant brand) gypsum false ceiling 2'x2' with aluminum channel framing imported. etc.	1200	Sq. ft
10	Elevation & Cubical rooms partition & glass Door with Imported Machine etc complete.	100	Sq. ft
11	Providing & fixing aluminum partition with kick plate section 4" wide with 6mm /plain glass including lock, handle with all respect accessories etc complete.	455	Sq. ft
	Providing and fixing Printed Granite Porcelain Tiles Flooring jointed in white cement and laid over bed of 1"to 2" thick grey cement concrete bed in ratio 1:2:4 i/c washing / filling of joints with white cement etc: complete in all respect (Imported Premium Quality - Shabbir / Master 24 x 24 inch)		
12	Flooring	600	Sq.ft
13	Providing & Fixing Sign board with Printed Penaflex, M.S Framing & M.S Sheets including Electric cabling & also fixing LED Tube light	0	Sq.ft
14	Doors Shutter 1-1/2" thick Teak wood ply shutters (Partially glazed with frost glass where as required) over first class partal wood skeleton (Solid) styles and rails core of partal wood and Teak ply wood (3 ply) on both sides including hold fasts, hinges, iron tower bolts, handles and cleats with cord etc complete in all respects	40	Sq.ft
15	Providing and fixing G.I. Sheet chowkats of 18 gauge for doors i/c pouring C.C. 1:2:4 inside chowkat etc: complete in all respect.		
a	2'-6" x 7'	35	Rft

b	3'-3" x 7'	0	Rft
c	3'-6" x 7'	0	Rft
16	M/Fixing Golden Teak Wood Chowkat size i/c hold fasts and fixing in block or brick masonry etc complete in all respects as per directives of SIEHS concerned person		
a	7-1/2" x 2"		Rft
b	9-1/2" x 2"	0	Rft
17	Providing & fixing wooden partition 3" thick partial wood framing 2" X 1" with both side pasting 1/2" thick lasani sheet	0	Sq.ft
18	Providing & fixing 1/2" thick & 3" high teak wood with polish finish skirting on wooden partition	0	Rft
19	Providing & Installation of Window Roller Blinds SKU: 11fd965d6852 Fabric thickness 0.22mm , 0.15-longer life and durability of fabric , multiple washes Color shade will provide vendor for selection	350	Sq.ft
20	Providing & Installation of Fiber Shade with iron rectangular pipe for Oxygen Cylinder / Generator / Medical dustbins, Rectangular pipe size 1 1/2" X 1" gauge 22, fiber thickness 2mm	72	Sq.ft
21	Providing & Installation of main entrance iron gate 16 gauge square pipe frame size of pipe 1.5" inch X 1.5" inch with 18 gauge ms sheet complete with red oxide, paint, hinges & all accessories	1	Nos
22	Installation of Concrete colum size 12" X 12" X 6' for the holding of main iron gate	2	Nos
23	Providing & Installation of Wooden top Kitchen Cabinets size L6' X H2'-6" X D18"	50	Sq.ft
24	Providing & Installation of Wooden bottom Kitchen boxes size L6' X H3' X D24" with doors	70	Sq.ft
25	Kitchen Marble Top with sink size W2'-3" X L6'	14	Sq.ft
26	Installation of ambulance cc ramp for washing purpose total length 6' X 2' High 1'-6" slope 4' X 2' Rest area 2' X 2'	40	Cft

**BOQ MITHI STATION REFURBISHMENT WORK - PLUMBING**

1	Providing & fixing 24" x 18" bavelled edge mirror of glass complete with glass shelf, 1/8" thick hard board and C.P screws fixed to wooden pleat. (Superior Quality)		No.
2	Providing & fixing chrome plated brass towel rail complete with brackets fixing on wooden cleats with 1" long C.P brass screws. (Superior Quality) 24" Long		No.
4	Providing and fixing Asian W.C Orisa type white or color glazed with low level flush tank/cistern connecting pipe and all accessories, filling, waste, traps, CP flexible pipe, T-stop cock as per approved sample of Master or equivalent brand with check nuts all joints plugging and screwing as necessary to the structure with pedestal etc. i/c making requisite number of hole in wall plinth and floor and making good in cement concrete 1:2:4. Complete in all respect and to the entire.	3	No.
5	Providing & fixing lavatory basin with mixture in white glazed earthenware complete with & i/c the cost of W. I. Or C. I. Cantilever brackets 6inches built into walls, painted white in 2 casts after a primary coat of red lead paint, a pair of 1/2" dia chrome plated pillar traps 1-1/2" rubber plug & chrome brass waste of approved pattern 1-1/4" dia malleable iron or c.p. brass traps, malleable iron or brass unions and making requisite number of holes in walls plinth and floor for pipe connection & making good in cement concrete 1: 2: 4. (Foreign or Equivalent).	3	No.
6	Providing & Fixing Muslim Shower with Double Bib Cock (Master)(Sanitary Item)	3	No.
7	Providing & Fixing Single Tap with Crystal Head 1/2 Dia. (Sanitary Item)		No.
8	Providing and fixing side pillar cock 1/2" dia approved quality make	3	No.
9	Providing and fixing waste Jali stainless steel 6" x 6"		No.
11	Providing & Fixing Schedule 40 UPVC pipe with special fitting		
a	1/2" dia	18	No.
b	3/4" dia	12	No.
c	1" dia	8	No.
d	1-1/4" dia		No.
e	3" dia	12	No.

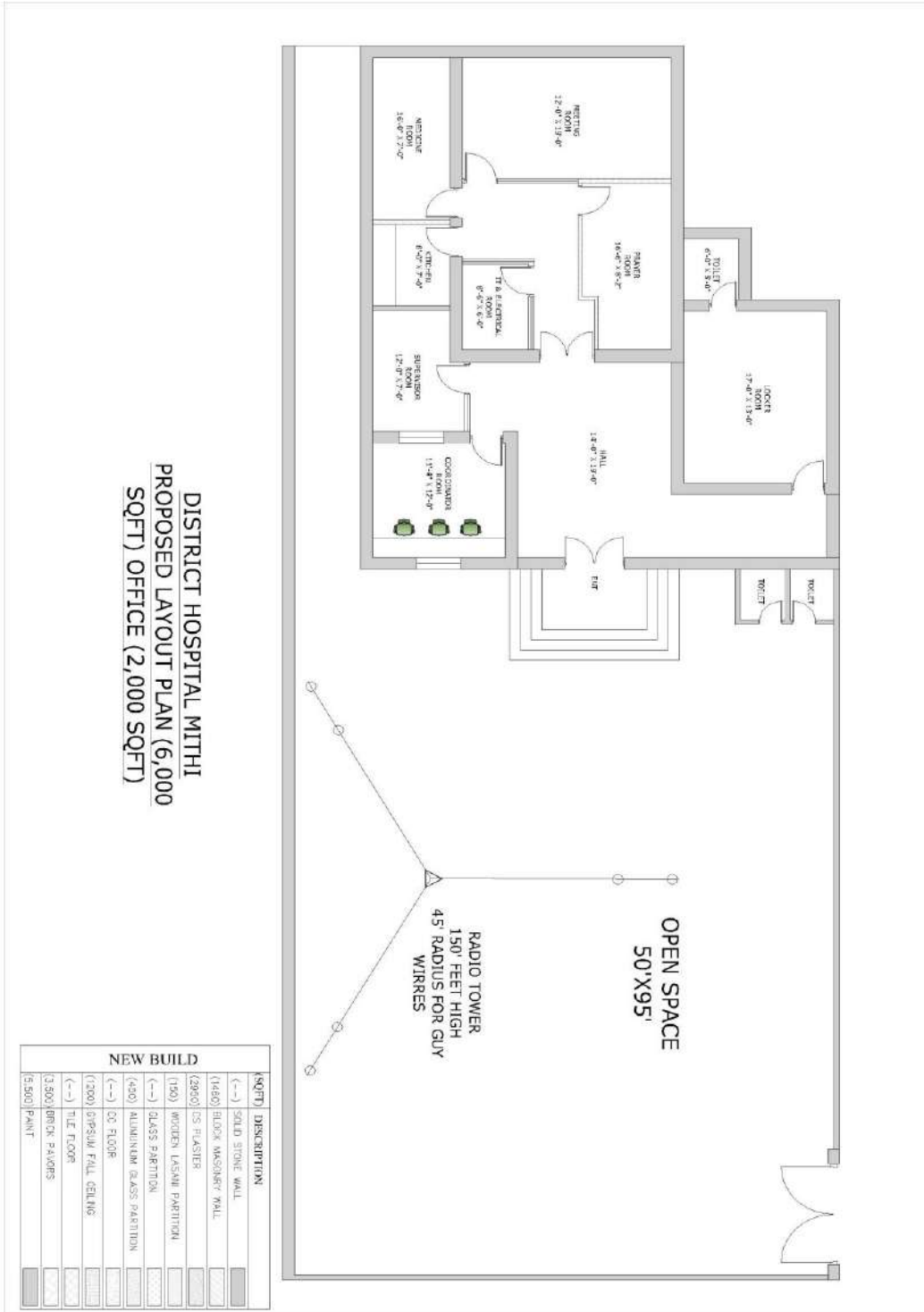
12	Providing & Fixing Y-Tee 3" Dia	2	No.
13	Providing & Fixing Elbow 3" Dia 45°	4	No.
14	Providing & fixing Bend 90° 3" Dia	6	No.
15	Providing & fixing Air Pipe Cap/Caval 3" Dia	0	No.
16	Complete Drainage System		
a	Providing & installation of service manhole chamber size 2' X 2' X 3' complete with drainage cover & plaster	4	Nos
b	Providing & laying 6" dia PVC pipe for sewerage line	120	Rft
c	Providing ambulance washing area drainage chamber with iron grill cover size 24" X 24" angle iron size 1 1/2" X 1 1/2" 16 gauge with red oxide & paint.	1	No
d	Providing & installation of water supply connection with 1/2" handle valve for ambulance washing	1	No
<b>BOQ MITHI STATION REFURBISHMENT WORK - IT INFRASTRUCTURE</b>			
1	Passive Networking: Supply Cat6 (3M, Schneider equivalent) installation at both end (user IO and patch panel) conduit, conduit fitting, boxes, back boxes, termination & all necessary accessories and fitting to complete the work. Vendor will provide and installation of 24 port patch panel (cat6), two eight socket PDU, Rack harnessing including data/ surveillance points testing and tagging. Dual face plate will be used in surveillance points and attendance device. Single face plate will be used in Desktop connections, printer point and supervisor desk.	20	Nos.
2	Supply & Installation of Patch Panel - 24 Port	1	Nos.
3	Supply & Installation PDU - 8 socket	2	Nos.
4	Supply & Installation Outdoor Weather shield protective cover for Camera	3	Nos.
<b>BOQ MITHI STATION REFURBISHMENT WORK - ELECTRICAL</b>			

1	Light Control Switches : Six/Four Gang 10/13A switch face plate for lighting control with back box, pvc conducting fitting complete in all aspects	26	Nos.
2	Supply & Installation of MDB	1	No.
3	Supply & Installation of MCCB/TP 150 Amp (04 pole)(Breaker Schneider / Hager)	4	Nos.
4	Supply & Installation of 20Amp Breaker (Single Pole)(Breaker Schneider / Hager)	8	Nos.
5	Supply & Installation of 16 Amp Breaker (Single Pole)(Breaker Schneider / Hager)	12	Nos.
6	Supply & Installation of 10 Amp Breaker (Single Pole)(Breaker Schneider / Hager)	16	No.
7	Reorganize & modify existing distribution board as per total electrical load, including Neutral, Earth Bar & Indication Lamps	1	Job
8	Supply & Installation 13A 2pin switch socket outlet Clipsal/ Schneider/Orange or approved Equivalent and its necessary wiring conduiting where needed complete with all respect	20	Nos.
9	Supply & Installation 13A multi / universal switch socket outlet Clipsal/ Schneider/Orange or approved Equivalent and its necessary wiring conduiting where needed complete with all respect	15	Nos.
10	Wiring for light and fans point 3/0.29 in channel patti (Pakistan Cables / Fast Cables/Newage or approved Equivalent)	20	Nos.
11	Wiring for mains with 2-7/.029 PVC wire on PVC casting and capping. (Pakistan Cables / Fast Cables/Newage or approved Equivalent)	5	Nos.
12	Wiring for main 2-7/0.44 PVC wire in casing capping	4	Nos.
13	Supply & installation of PVC conduit with accessories embed in wall / floor / ceiling or surface installed. Conduit size:1" Dia, new wiring is inclusive of conduiting work	250	RFT
14	Supply, laying & termination of 04 Core 16mm <sup>2</sup> cable for main to MDB (Pakistan Cables / Fast Cables/Newage or approved Equivalent)complete with all respect	40	RFT

15	Supply & installation of LED Light and its fixture ring holder lights. (Philips/Osaka/Tuff or approved equivalent)	20	Nos.
16	Supply & Installation of ceiling fans 56" (Pak Fan/Royal fan or approved Equivalent)	10	Nos.
17	Supply & Installation of ceiling bracket fan 22" (Pak Fan/Royal fan or approved Equivalent)	4	Each
18	Supply & Installation of Exhaust fan 12"x12" (Pak Fan/Royal fan or approved Equivalent)	4	Nos
19	Fixing of Breaket & Ceiling Fans	12	Nos.
20	Supplying, testing & commissioning High ambient split type air conditions wall mounted with decorative grill electric-220 volt-50HZ, single phase capacity -12000Btu (1 Ton net capacity) out Door condenser tube 360 psi tested evaporator 180 psi tested operation condition ambient 55 celic use compressor (Rotary) T3 type tested on 60 celic use ambient. i/c making holes with diamond bit, nut, bolts including cartage etc complete in all respect. Make: Mitsubishi / Panasonic /Daikin / GREE / Haier / Kenwood, Country of Origin:Japan / KSA / USA or equivalent.	2	Nos.
21	Installation with wall angle Rawal Bolt etc Complete	4	Nos.
22	Supplying & Installation Extra Control Wire 110/76 connecting for Outer Unit.	60	Rft
23	Channel patti 40 x 40	180	Rft
24	Channel patti 60 x 60	50	Rft
25	Complete Earth pit in all respect with competent Engineers Hand, Depth 35-40 feet width 3-4 inch with Proper UPVC Pipe and UPVC cover for future refilling earth pits, Copper rod 6-10 feet 01 inch, copper rope 70mm to 120mm, proper copper strip with lugs. Testing work earth to Neutral less than 2-V.	2	No.
26	Providing of MDB AC With circuit Breaker Complete.1 Number MCCB/TP 100 Amp,10 Number 20Amp,10 Number 16 Amp,10 Number 10 Amp Including Neutral, Earth Bar & Indication Lamps.(Breaker Schneider / Hager)	1	No.



**VOLUME "II" SIEHS – MITHI STATION**



**ANNEXURE "C" UMARKOT STATION**

S. NO.	DESCRIPTION	QTY	UOM
<b>BOQ UMARKOT STATION REFURBISHMENT WORK - CIVIL, PLUMBING &amp; CARPENTRY WORK</b>			
1	Earth filling verandah subbase gravels for paver : Earth filling from approved borrow area 1st class earth to be filled without vegetation & also with proper ramming & compaction layer by layer no exceeding 6" as per instruction of engineer in-charge.AASHTO standard compaction	24.75	Cft
2	PCC LEAN FLOOR (1:3:6) Providing and laying Flooring plain cement concrete with Sr cement for concreting to be used approved by engineer in- charge. Also screeding on top of the roof surface given thickness 1:3:6. Complete the work in all respects approved by SIEHS Nominated Person.	6.875	Cft
3	CERAMIC TILE flooring:-Supplying & laying approved colour and brand anti-skid matt finished 1st quality ceramic tiles of minimum 6.50 mm thick and of size not less than 600mm x 600 mm for flooring including bedding layer of 20mm average thick in CM 1:5, laid to proper slope , line and level including cement floating of joints, polishing and cleaning , filling the joints with white cement mixed with matching colour pigment complete as directed by the SIEHS Nominated Person.	275	Sft
4	PAVER BLOCK flooring:- Providing and laying 60mm thick factory made 1st class cement concrete interlocking paver block of M -40 grade or 6000psi made by block making machine with strong vibratory compaction and of approved size and design/ shape laid in required colour and pattern over and including 50mm thick compacted bed of course sand, filling the joints with coarse sand etc. all complete as per the direction of SIEHS Nominated Person.	0	Sft
5	Boundary PARTITION WALL Brick Masonry 1:4 : Providing supplying & fixing of 1st class brick masonry with SR cement complete work in all respect with proper finishing & curing with sweet water all work to be approved by SIEHS Nominated Person.	448	Cft

6	Plaster walls (1:4):- Providing and rendering 16mm thick cement mortar finish in double layer 1:4 (1 cement : 4 fine sand) using screened clean sand on internal surfaces of bricks or concrete surfaces including providing neeru finish to a thickness of about 1.5mm finished smooth with steel trowel including preparation of surface ,curing etc at all levels /heights & locations complete as specified and directed by SIEHS Nominated Person.	600	Sft
7	Plaster ceiling (1:4):- Providing and rendering 16mm thick cement mortar finish in double layer 1:4 (1 cement : 4 fine sand) using screened clean sand on internal surfaces of bricks or concrete surfaces including providing neeru finish to a thickness of about 1.5mm finished smooth with steel trowel including preparation of surface ,curing etc at all levels /heights & locations complete as specified and directed by SIEHS Nominated Person.	100	Sft
8	Paint work:-Providing & applying two coats of painting with Oil Bound Distemper of approved brand weather shield, shade & manufacture over a coat of primer including preparing the surface to line & level & to receive the paintings for inner outer walls & ceilings at all levels with primer etc., Complete as specified including all other necessary related work, leads & lifts etc., complete as specified in the drawings, specifications and as directed by by SIEHS Nominated Person.	8500	Sft
9	RCC COLUMNS FOR GATE (1:2:4) :- Providing and Laying in position Reinforced cement concrete machine mixed and machine vibrated design mix cement concrete of below specified grade for structural elements, reinforced cement concrete using crushed stone graded aggregate 3/4" (19mm) and down gauge and bolari sand as per specification having a minimum works cylinder crushing strength of 3500 psi at 28 days with a mix not leaner than (1:2:4) including fair face form work and its removal, compacting, leveling and curing & housekeeping etc. includes reinforcement of columns, Slab & beams see drawing All work complete as shown in drawing, notes, & in all respect as per technical specification & directed by SIEHS Nominated Person.	0	Cft
10	Main gate MS 12'x7' Providing & Installation of main entrance iron gate 16 gauge square pipe frame size of pipe 1.5" inch X 1.5" inch with 18 gauge MS sheet complete with red oxide, paint, hinges & all accessories.	0	No
11	TOTAL covered area Roof screeding 1:2:4 PCC:	0	Sft
12	Roof water proofing:-Water proofing with proofing membrane & water proofing chemical	0	Sft
13	Repair & paint of existing door	6	NOS

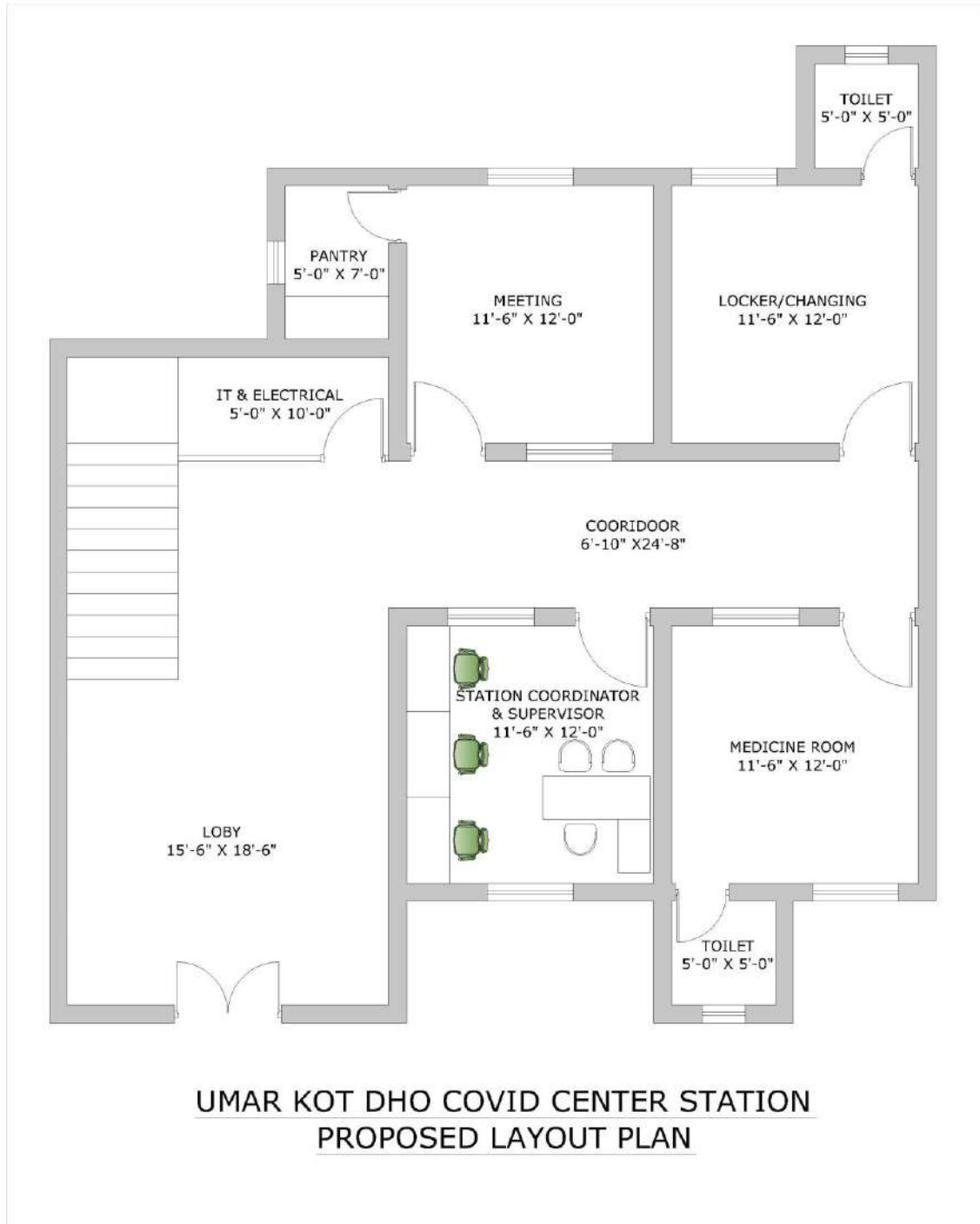
14	Provide supply fixing of wooden Door (3'x7') with GI 14 gauge (Chokhat) frame	0	NOS
15	Provide supply fixing of wooden Door (2'x7') with GI 14 gauge (Chokhat) frame	0	NOS
16	Repair & paint work of existing Wooden Windows	4	NOS
17	Fixing of Net on washroom and Kitchen Vent	4	NOS
18	Net replacement of Existing windows (4' x 5') & Doors (3.5x7)ft includes mosquito proof net door repair	10	NOS
19	Providing and making of ambulance disinfecting area including water supply line with pressure pump, drain system for De watering and Installation of ambulance M.S.Angle iron ramp for ambulance washing purpose 14 gauge angle iron size 2" total length 7' X 2' High 1'-6" slope 4' X 2' Rest area 3' X 2'	1	L.S
20	<b>DRAINAGE SYSTEM:-</b> Supply & providing of all materials, equipment's tools, testing commissioning and the installation workmanship as per the drawings and specifications and directions, Construction for sewerage system for utility effluent & sludge including drainage pipes connect manholes, septic tanks & soak pit, the work includes supplying installation commissioning providing fixing of above mentioned work with Excavation for Pipes to Achieve levels and prepare to Carry out Setting out main sewer line and minor sewer lines Back fill with selected hardcore materials and compact to required level also fixing of pipes manhole covers ventilation pipes with proper jointing cutting & shaping, testing etc depth shall be measured from inlet level to the outlet level all work complete in all respect as per technical specification & as directed by by SIEHS Engineer in charge.	0	L.S
21	Providing & Installation of Fiber Shade with 1 1/2" X 2" rectangular Iron framing mash size 3' X 3' Holding pillar 3" dia 16 gauge 10' height pipe with 2 mm UPVC wave sheet complete with red oxide & paint	96	Sft
22	Providing & fixing aluminum partition with door size 3'x6' section 4" wide with 5mm /one side vision glass including lock, handle with all respect accessories etc complete of size 10'x8'	80	Sft
23	Providing Fiber tank 500 US Gallons L: 88 inch X W: 47 inch X H: 48 inch MASTER 5 year warranty	2	Each

24	WASHROOM FITTING PLUMBING SANITARY WORK:- Supply provide and fix material includes complete sanitary work plumbing shower set W.C waste net p trap u trap etc complete work as per technical specification & directed by by SIEHS Engineer in charge.	0	L/S
<b>BOQ UMARKOT STATION REFURBISHMENT WORK - IT INFRASTRUCTURE</b>			
1	Passive Networking: Supply Cat6 (3M, Schneider equivalent) installation at both end (user IO and patch panel) conduit, conduit fitting, boxes, back boxes, termination & all necessary accessories and fitting to complete the work. Vendor will provide and installation of 24 port patch panel (cat6), two eight socket PDU, Rack harnessing including data/ surveillance points testing and tagging. Dual face plate will be used in surveillance points and attendance device. Single face plate will be used in Desktop connections, printer point and supervisor desk. Three iron rod stand/ shade required for outdoor cams.	20	Nos.
2	Supply & Installation of Patch Panel - 24 Port	1	Nos.
3	Supply & Installation PDU - 8 socket	2	Nos.
4	Supply & Installation Outdoor Weather shield protective cover for Camera	3	Nos.
<b>BOQ UMARKOT REFURBISHMENT WORK - ELECTRICAL</b>			
1	Light Control Switches : Six/Four Gang 10/13A switch face plate for lighting control with back box, pvc conducting fitting complete in all aspects	14	Nos.
2	Supply & Installation of MDB	1	No.
3	Supply & Installation of MCCB/TP 150 Amp (04 pole)(Breaker Schneider / Hager)	2	Nos.
4	Supply & Installation of 20Amp Breaker (Single Pole)(Breaker Schneider / Hager)	4	Nos.
5	Supply & Installation of 16 Amp Breaker (Single Pole)(Breaker Schneider / Hager)	6	Nos.
6	Supply & Installation of 10 Amp Breaker (Single Pole)(Breaker Schneider / Hager)	8	No.

7	Reorganize & modify existing distribution board as per total electrical load, including Neutral, Earth Bar & Indication Lamps	1	Job
8	Supply & Installation 13A 2pin switch socket outlet Clipsal/ Schneider /Orange or Equivalent	10	Nos.
9	Supply & Installation 13A multi / universal switch socket outlet Clipsal/ Schneider /Orange or Equivalent	12	Nos.
10	Wiring for light and fans point 3/0.29 in channel patti (Pakistan Cables / Fast Cables/Newage or Equivalent)	26	Nos.
11	Wiring for mains with 2-7/.029 PVC wire on PVC casting and capping. (Pakistan Cables / Fast Cables/Newage or Equivalent)	6	Nos.
12	Wiring for main 2-7/0.44 PVC wire in casing capping	3	Nos.
13	Supply & installation of PVC conduit with accessories embed in wall / floor / ceiling or surface installed.	24	Nos.
14	04 Core 16mm <sup>2</sup> cable for main to MDB (Pakistan Cables / Fast Cables/Newage or Equivalent)	50	RFT
15	Light fixture LED ring holder lights. (Philips/Osaka/Tuff or equivalent)	20	Nos.
16	Modification in Existing DBs according to actual Electrical Load distribution.	1	Job
17	Supply & Installation of ceiling fans 56" (Pak Fan/Royal fan or Equivalent)	4	Nos.
18	Supply & Installation of ceiling bracket fan 22" (Pak Fan/Royal fan or Equivalent)	2	Each
19	Supply & Installation of Exhaust fan 12"x12" (Pak Fan/Royal fan or Equivalent)	3	Nos
20	Lights and board and electric fitting work for 2 wash room, (Switch - 2, Socket 1)	2	Nos



**VOLUME "III" UMARKOT STATION**



**ANNEXURE "D" SIEHS – MIRPURKHAS STATION**

S. NO.	DESCRIPTION	QTY	UOM
<b>BOQ MIRPURKHAS STATION REFURBISHMENT WORK - CIVIL, PLUMBING &amp; CARPENTARY WORK</b>			
1	Dismantling / removing of existing constructed structures, fixtures, tools & equipment's with all necessary precautionary measures, stacking useable dismantled materials at designated place and disposal of surplus stuff etc. from site, (block masonry, Pavers, dado/ floor tiles, wooden/ glass door, windows, plaster, wooden partition, aluminum tile, false ceiling, roller shutter, AC / Electrical / Plumbing or any other item which is required to be demolished / removed but not mentioned above) in the basement floor. Make smooth plaster finished wall & smooth tile/marble finished floor (Match with existing floor)/wall after dismantling work.	1	L/S
2	Providing and laying Class 'D' 1:3:6 cement concrete Solid Block Masonry wall 4" in thickness and above set in 1:6 cement SRC sand mortar in ground floor superstructure i/c racking of joints and curing, etc., complete.(Minimum crushing strength 1300-lbs/P.S.I) Brand (Lucky, Falcon or equivalent duly approved by employer engineer). Roof of the contains 10mm deformed steel bar on L/4 binding schedule slab size 7 x 8. C.C Flooring 3"to 4" thick grey cement concrete bed in ratio 1:2:4 Including Cement, Sand, Crush approx 12' x 16' complete with all required finishing work Room must contains necessary light fixture (Electrification points for fan and light) (Bracket fan will be used).Room must be complete with all necessary work for usage. 7'x7' Covered Area & 9' high.	60	Sq Ft
3	Roof water proofing: screeding of 40ft x 40ft roof and Tooping of floor with 2inch thick CC material and making a smooth surface top then applying water proofing coat on the same (5years warranty)	1600	Sft
4	Paint of existing door/window frame chokhat & grills, i/c polish work, repairing hardware (Hinges/laches/handles).	6	NO
5	Providing & Installation of 1/2" th lamination top Kitchen Cabinets with door shutter edges pvc finish, center partition, locks, hinges handles size L6' X H2'-0" X D1'-6"	20	Sq.ft
6	Providing & Installation of 1/2" th lamination base Kitchen Cabinets with partial framing 1-1/2"x2" door shutter edges pvc finish, center partition, locks, hinges handles size L6' X H3'X D2'	40	Sq.ft

7	Kitchen Marble Top 2'6"x8' with sink size W2'-0" X L6'	21	Sq.ft
8	M.S.Angle iron ramp for ambulance washing purpose 14 gauge angle iron size 2" total length 7' X 2' High 1'-6" slope 4' X 2' Rest area 3' X 2'	2	LS
9	Providing and laying Class 'D' 1:3:6 cement concrete Solid Block Masonry wall 4" in thickness and above set in 1:6 cement SRC sand mortar in ground floor superstructure i/c racking of joints and curing, etc., complete.(Minimum crushing strength 1300-lbs/P.S.I) Brand (Lucky, Falcon or equivalent duly approved by employer engineer)	800	sqft
10	SRC Cement Plaster in Ratio 1:6 (15 mm Thick) i/c floating coat of cement in proper design & profile on walls/beams & columns. This rate also i/c providing expanded metal at the joint of R.C.C. Members and block masonry where as required etc. complete in all respect as per specification and drawings and approval of SIEHS authorized person Brand (Lucky, Falcon or equivalent duly approved by employer engineer)	1600	sq.ft
11	Doors Shutter 1-1/2" thick Teak wood ply shutters (Partially glazed with frost glass where as required) over first class partial wood skeleton (Solid) styles and rails core of partial wood and Teak ply wood (3 ply) on both sides including hold fasts, hinges, iron tower bolts, handles and cleats with cord etc complete in all respects	150	Sq.ft
12	Providing and fixing G.I. Sheet chowkats of 18 gauge for doors i/c pouring C.C. 1:2:4 inside chowkat etc: complete in all respect.2'-6" x 7'	60	Rft
13	Providing & laying gypsum board ceiling, 24"x24" DFB (with aluminum back) in straight, curved, tiles or multiple profiles as shown on drawing section, fixed with proper Disco aluminum, " T" & "L" (grooved) section of CKM with appropriate suspension system, having provisions for light and AC grills (where ever required) complete in all respect.	1,500	sqft
<b>BOQ MIRPURKHAS STATION REFURBISHMENT WORK - PLUMBING</b>			
1	Providing & fixing 24" x 18" beveled edge mirror of glass complete with glass shelf, 1/8" thick hard board and C.P screws fixed to wooden pleat. (Superior Quality)	4	No.
2	Providing & fixing chrome plated brass towel rail complete with brackets fixing on wooden cleats with 1" long C.P brass screws. (Superior Quality) 24" Long	4	No.

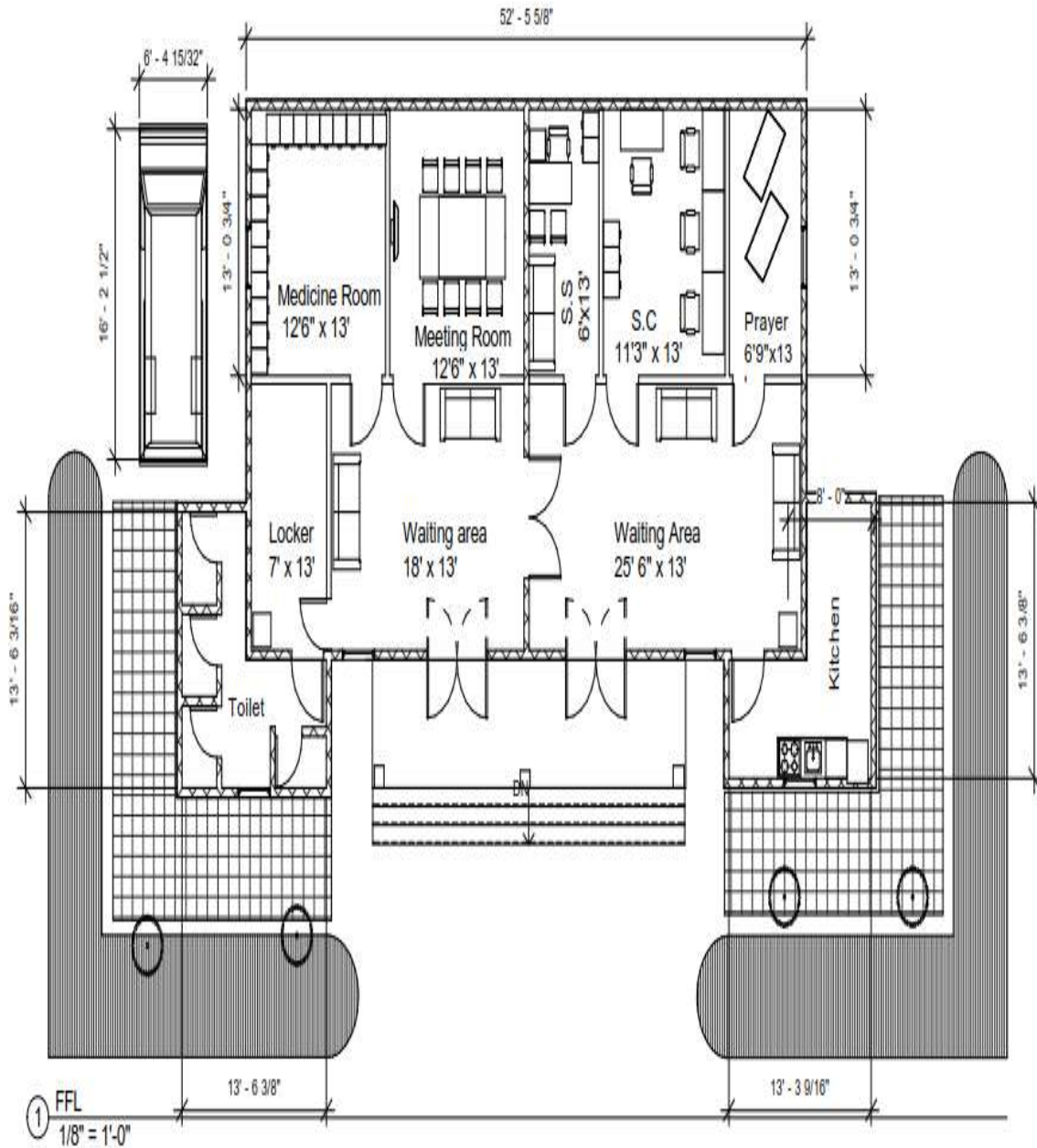
4	Providing and fixing Asian W.C Orisa type white or color glazed with low level flush tank/cistern connecting pipe and all accessories, filling, waste, traps, CP flexible pipe, T-stop cock as per approved sample of Master or equivalent brand with check nuts all joints plugging and screwing as necessary to the structure with pedestal etc. i/c making requisite number of hole in wall plinth and floor and making good in cement concrete 1:2:4. Complete in all respect and to the entire.	4	No.
5	Providing & fixing lavatory basin with mixture in white glazed earthenware complete with & i/c the cost of W. I. Or C. I. Cantilever brackets 6 inches built into walls, painted white in 2 casts after a primary coat of red lead paint, a pair of 1/2" dia chrome plated pillar traps 1-1/2" rubber plug & chrome brass waste of approved pattern 1-1/4" dia malleable iron or c.p. brass traps, malleable iron or brass unions and making requisite number of holes in walls plinth and floor for pipe connection & making good in cement concrete 1: 2: 4. (Foreign or Equivalent).	4	No.
6	Providing & Fixing Muslim Shower with Double Bib Cock (Master)(Sanitary Item)	4	No.
7	Providing & Fixing Single Tap with Crystal Head 1/2 Dia. (Sanitary Item)	4	No.
8	Providing and fixing side pillar cock 1/2" dia approved quality make	4	No.
9	Providing and fixing waste Jali stainless steel 6" x 6"	4	No.
11	Providing & Fixing Schedule 40 UPVC pipe with special fitting	4	
a	1/2" dia	8	No.
b	3/4" dia	4	No.
c	1" dia	0	No.
d	1-1/4" dia	20	No.
e	3" dia	8	No.
12	Providing & Fixing Y-Tee 3" Dia	6	No.
13	Providing & Fixing Elbow 3" Dia 45°	4	No.
14	Providing & fixing Bend 90° 3" Dia	6	No.

15	Providing & fixing Air Pipe Cap/Caval 3" Dia	4	No.
16	Complete Drainage System	4	
a	Providing & installation of service manhole chamber size 2' X 2' X 3' complete with drainage cover & plaster	3	Nos
b	Providing & laying 6" dia PVC pipe for sewerage line with all necessary fittings	50	Rft
c	Providing ambulance washing area drainage chamber with iron grill cover size 24" X 24" angle iron size 1 1/2" X 1 1/2" 16 gauge with red oxide & paint.	1	No
d	Providing & installation of water supply connection with 1/2" handle valve for ambulance washing	45	Rft
<b>BOQ MIRPURKHAS STATION REFURBISHMENT WORK - IT INFRASTRUCTURE</b>			
1	Passive Networking: Supply Cat6 (3M, Schneider equivalent) installation at both end (user IO and patch panel) conduit, conduit fitting, boxes, back boxes, termination & all necessary accessories and fitting to complete the work. Vendor will provide and installation of 24 port patch panel (cat6), two eight socket PDU, Rack harnessing including data/ surveillance points testing and tagging. Dual face plate will be used in surveillance points and attendance device. Single face plate will be used in Desktop connections, printer point and supervisor desk.	30	Nos.
2	Supply & Installation of Patch Panel - 24 Port	1	Nos.
3	Supply & Installation PDU - 8 socket	2	Nos.
4	Supply & Installation Outdoor Weather shield protective cover for Camera	3	Nos.
<b>BOQ MIRPURKHAS REFURBISHMENT WORK - ELECTRICAL</b>			
1	Light Control Switches : Six/Four Gang 10/13A switch face plate for lighting control with back box, pvc conducting fitting complete in all aspects	26	Nos.
2	Supply & Installation of MDB	1	No.
3	Supply & Installation of MCCB/TP 150 Amp (04 pole)(Breaker Schneider / Hager)	4	Nos.

4	Supply & Installation of 20Amp Breaker (Single Pole)(Breaker Schneider / Hager)	8	Nos.
5	Supply & Installation of 16 Amp Breaker (Single Pole)(Breaker Schneider / Hager)	12	Nos.
6	Supply & Installation of 10 Amp Breaker (Single Pole)(Breaker Schneider / Hager)	16	No.
7	Reorganize & modify existing distribution board as per total electrical load, including Neutral, Earth Bar & Indication Lamps	1	Job
8	Supply & Installation 13A 2pin switch socket outlet Clipsal/ Schneider /Orange or approved Equivalent and its necessary wiring conduiting where needed complete with all respect	20	Nos.
9	Supply & Installation 13A multi / universal switch socket outlet Clipsal/ Schneider /Orange or approved Equivalent and its necessary wiring conduiting where needed complete with all respect	15	Nos.
10	Wiring for light and fans point 3/0.29 in channel patti (Pakistan Cables / Fast Cables/Newage or approved Equivalent)	20	Nos.
11	Wiring for mains with 2-7/.029 PVC wire on PVC casting and capping. (Pakistan Cables / Fast Cables/Newage or approved Equivalent)	5	Nos.
12	Wiring for main 2-7/0.44 PVC wire in casing capping	4	Nos.
13	Supply & installation of PVC conduit with accessories embed in wall / floor / ceiling or surface installed. Conduit size:1" Dia, new wiring is inclusive of conduiting work	250	RFT
14	Supply, laying & termination of 04 Core 16mm <sup>2</sup> cable for main to MDB (Pakistan Cables / Fast Cables/Newage or approved Equivalent)complete with all respect	40	RFT
15	Supply & installation of LED Light and its fixture ring holder lights. (Philips/Osaka/Tuff or approved equivalent)	20	Nos.
16	Supply & Installation of ceiling fans 56" (Pak Fan/Royal fan or approved Equivalent)	10	Nos.
17	Supply & Installation of ceiling bracket fan 22" (Pak Fan/Royal fan or approved Equivalent)	4	Each
18	Supply & Installation of Exhaust fan 12"x12" (Pak Fan/Royal fan or approved Equivalent)	4	Nos



**VOLUME "IV" SIEHS – MIRPURKHAS STATION**



**ANNEXURE "E" SIEHS – TANDO ALLAHYAR STATION**

S. NO.	DESCRIPTION	QTY	UOM
<b>BOQ TANDO ALLAHYAR STATION REFURBISHMENT WORK - CIVIL, PLUMBING &amp; CARPENTARY WORK</b>			
1	Earth filling from approved borrow area 1st class earth to be filled without vegetation & also with proper ramming & compaction layer by layer no exceeding 6" as per instruction of engineer incharge.AASHTO standard compaction	4000	Cft
2	Providing & fixing cement paving block flooring having Size of Pavers,60mm thick & 100 X 200 Shape in a specified pattern and design with the combination of natural colour and colored blocks, having strength b/w 4000 lbs. / Sq.ft to 6000 lbs. / Sft over 2" thick compact bed of crush ash i/c filling the joints with river sand and also i/c proper compaction with compactor as per instruction given by SIEHS authorized person	5000	Sq.ft
3	Plaster walls (1:4):- Providing and rendering 16mm thick cement mortar finish in double layer 1:4 (1 cement : 4 fine sand) using screened clean sand on internal surfaces of bricks or concrete surfaces including providing neeru finish to a thickness of about 1.5mm finished smooth with steel trowel including preparation of surface ,curing etc at all levels /heights & locations complete as specified and directed by SIEHS Nominated Person.	250	Sft
4	Applying 2 Coats of Plastic emulsion Paint i/c primary coat of chalk and preparing base surface and filling where as required specifications etc complete in all respects as per SIEHS authorized person (Nelson / Reliance / GOBIS / Glamour)	4000	Sft
5	Doors Shutter 1-1/2" thick Teak wood ply shutters (Partially glazed with frost glass where as required) over first class partal wood skeleton (Solid) styles and rails core of partal wood and Teak ply wood (3 ply) on both sides including hold fasts, hinges, iron tower bolts, handles and cleats with cord etc complete in all respects	700	Sq.ft
6	Providing and fixing G.I. Sheet chowkats of 18 gauge for doors i/c pouring C.C. 1:2:4 inside chowkat etc: complete in all respect.		
a	2'-6" x 7'	100	Rft
b	3'-3" x 7'	100	Rft
c	3'-6" x 7'	100	Rft

7	Providing & Installation of Fiber Shade with 1 1/2" X 2" rectangular Iron framing mesh size 3' X 3' Holding pillar 3" dia 16 gauge 10' height pipe with 2 mm UPVC wave sheet complete with red oxide & paint	250	Sft
8	M.S.Angle iron ramp for ambulance washing purpose 14 gauge angle iron size 2" total length 7' X 2' High 1'-6" slope 4' X 2' Rest area 3' X 2'	2	L/S
9	RCC COLUMNS FOR GATE (1:2:4) :- Providing and Laying in position Reinforced cement concrete machine mixed and machine vibrated design mix cement concrete of below specified grade for structural elements, reinforced cement concrete using crushed stone graded aggregate 3/4" (19mm) and down gauge and bolari sand as per specification having a minimum works cylinder crushing strength of 3500 psi at 28 days with a mix not leaner than (1:2:4) including fair face form work and its removal, compacting, leveling and curing & housekeeping etc. includes reinforcement of columns, Slab & beams see drawing All work complete as shown in drawing, notes, & in all respect as per technical specification & directed by by SIEHS Nominated Person.	96	Cft
10	Main gate MS 11'x7' Providing & Installation of main entrance iron gate 16 gauge square pipe frame size of pipe 1.5" inch X 1.5" inch with 18 gauge ms sheet complete with red oxide, paint, hinges & all accessories.	1	L/S
11	Removal of bushes and debris from facility nearby surrounding	1	L/S
<b>BOQ TANDO ALLAHYAR STATION REFURBISHMENT WORK - PLUMBING</b>			
1	Providing & fixing 24" x 18" beveled edge mirror of glass complete with glass shelf, 1/8" thick hard board and C.P screws fixed to wooden pleat. (Superior Quality)	12	No.
2	Providing & fixing chrome plated brass towel rail complete with brackets fixing on wooden cleats with 1" long C.P brass screws. (Superior Quality) 24" Long	12	No.
3	Providing and fixing Asian W.C Orisa type white or color glazed with low level flush tank/cistern connecting pipe and all accessories, filling, waste, traps, CP flexible pipe, T-stop cock as per approved sample of Master or equivalent brand with check nuts all joints plugging and screwing as necessary to the structure with pedestal etc. i/c making requisite number of hole in wall plinth and floor and making good in cement concrete 1:2:4. Complete in all respect and to the entire.	12	No.

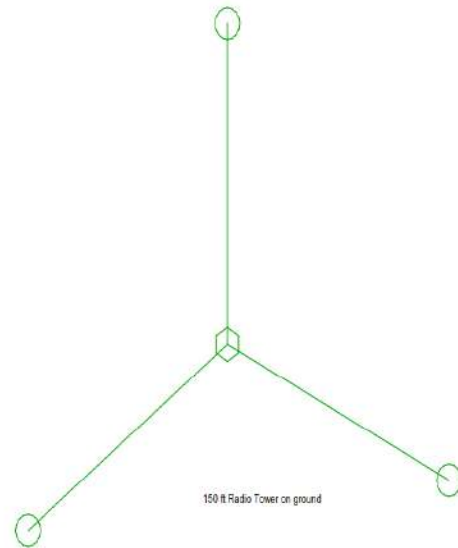
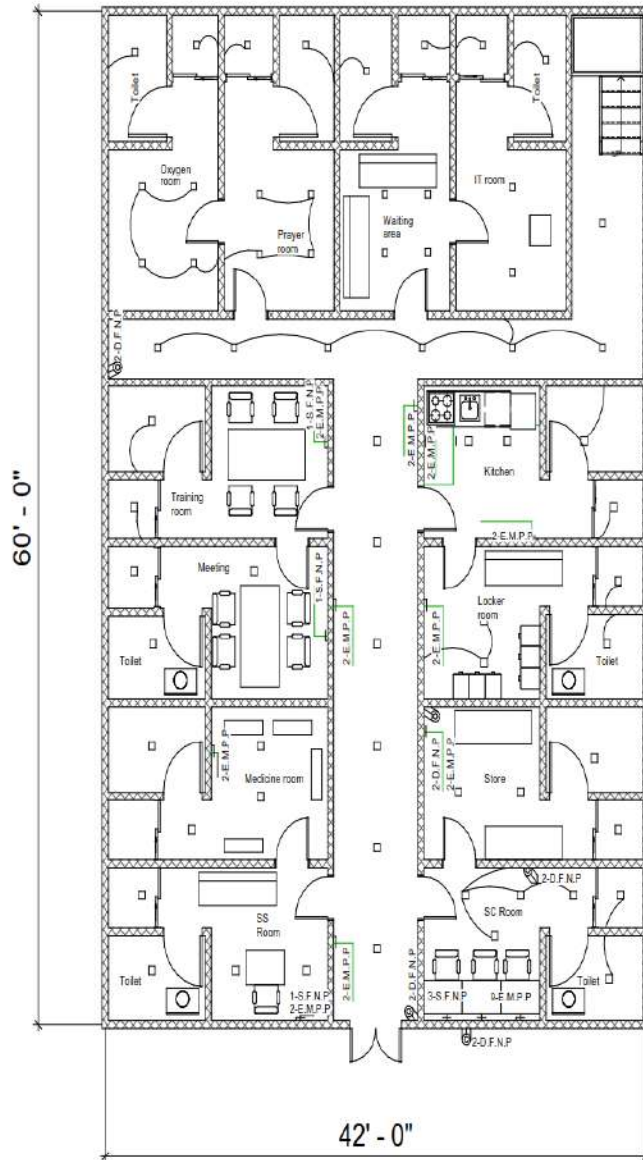
4	Providing & fixing lavatory basin with mixture in white glazed earthenware complete with & i/c the cost of W. I. Or C. I. Cantilever brackets 6inches built into walls, painted white in 2 casts after a primary coat of red lead paint, a pair of 1/2" dia chrome plated pillar traps 1-1/2" rubber plug & chrome brass waste of approved pattern 1-1/4" dia malleable iron or c.p. brass traps, malleable iron or brass unions and making requisite number of holes in walls plinth and floor for pipe connection & making good in cement concrete 1: 2: 4. (Foreign or Equivalent).	12	No.
5	Providing & Fixing Muslim Shower with Double Bib Cock (Master)(Sanitary Item)	12	No.
6	Providing & Fixing Single Tap with Crystal Head 1/2 Dia. (Sanitary Item)	12	No.
7	Providing and fixing side pillar cock 1/2" dia approved quality make	12	No.
8	Providing and fixing waste Jali stainless steel 6" x 6"	12	No.
9	Providing & Fixing Schedule 40 UPVC pipe with special fitting		
a	1/2" dia	8	No.
b	3/4" dia	12	No.
c	1" dia	0	No.
d	1-1/4" dia	20	No.
e	3" dia	8	No.
10	Providing & Fixing Y-Tee 3" Dia	6	No.
11	Providing & Fixing Elbow 3" Dia 45°	6	No.
12	Providing & fixing Bend 90° 3" Dia	6	No.
13	Providing & fixing Air Pipe Cap/Caval 3" Dia	6	No.
14	Complete Drainage System		
a	Providing & installation of service manhole chamber size 2' X 2' X 3' complete with drainage cover & plaster	3	Nos
b	Providing & laying 6" dia PVC pipe for sewerage line	200	Rft

c	Providing ambulance washing area drainage chamber with iron grill cover size 24" X 24" angle iron size 1 1/2" X 1 1/2" 16 gauge with red oxide & paint.	1	No
d	Providing & installation of water supply connection with 1/2" handle valve for ambulance washing	1	No
<b>BOQ TANDO ALLAHYAR STATION REFURBISHMENT WORK - IT INFRASTRUCTURE</b>			
1	Passive Networking: Supply Cat6 (3M, Schneider equivalent) installation at both end (user IO and patch panel) conduit, conduit fitting, boxes, back boxes, termination & all necessary accessories and fitting to complete the work. Vendor will provide and installation of 24 port patch panel (cat6), two eight socket PDU, Rack harnessing including data/ surveillance points testing and tagging. Dual face plate will be used in surveillance points and attendance device. Single face plate will be used in Desktop connections, printer point and supervisor desk.	30	Nos.
2	Supply & Installation of Patch Panel - 24 Port	1	Nos.
3	Supply & Installation PDU - 8 socket	2	Nos.
4	Supply & Installation Outdoor Weather shield protective cover for Camera	3	Nos.
<b>BOQ TANDO ALLAHYAR REFURBISHMENT WORK - ELECTRICAL</b>			
1	Light Control Switches : Six/Four Gang 10/13A switch face plate for lighting control with back box, pvc conducting fitting complete in all aspects	51	Nos.
2	Supply & Installation of MDB	1	No.
3	Supply & Installation of MCCB/TP 150 Amp (04 pole)(Breaker Schneider / Hager)	4	Nos.
4	Supply & Installation of 20Amp Breaker (Single Pole)(Breaker Schneider / Hager)	8	Nos.
5	Supply & Installation of 16 Amp Breaker (Single Pole)(Breaker Schneider / Hager)	12	Nos.
6	Supply & Installation of 10 Amp Breaker (Single Pole)(Breaker Schneider / Hager)	16	No.

7	Reorganize & modify existing distribution board as per total electrical load, including Neutral, Earth Bar & Indication Lamps	1	Job
8	Supply & Installation 13A 2pin switch socket outlet Clipsal/ Schneider /Orange or approved Equivalent. wiring conduiting where needed complete with all respect	30	Nos.
9	Supply & Installation 13A multi / universal switch socket outlet Clipsal/ Schneider /Orange or approved Equivalent and its necessary wiring conduiting where needed complete with all respect	25	Nos.
10	Wiring for light and fans point 3/0.29 in channel patti (Pakistan Cables / Fast Cables/Newage or approved Equivalent)	26	Nos.
11	Wiring for mains with 2-7/.029 PVC wire on PVC casting and capping. (Pakistan Cables / Fast Cables/Newage or approved Equivalent)	6	Nos.
12	Wiring for main 2-7/0.44 PVC wire in casing capping	6	Nos.
13	Supply & installation of PVC conduit with accessories embed in wall / floor / ceiling or surface installed. Conduit size 1" Dia, new wiring is inclusive of conduiting work	350	RFT
14	Supply, laying & termination of 04 Core 16mm <sup>2</sup> cable for main to MDB (Pakistan Cables / Fast Cables/Newage or approved Equivalent) complete with all respect	75	RFT
15	Supply & installation of LED Light and its fixture ring holder lights. (Philips/Osaka/Tuff or approved equivalent)	50	Nos.
16	Supply & Installation of ceiling fans 56" (Pak Fan/Royal fan or approved Equivalent)	12	Nos.
17	Supply & Installation of ceiling bracket fan 22" (Pak Fan/Royal fan or approved Equivalent)	8	Each
18	Supply & Installation of Exhaust fan 12"x12" (Pak Fan/Royal fan or approved Equivalent)	4	Nos



**VOLUME "V" SIEHS – TANDO ALLAHYAR STATION**



Tando Allahyar Proposed Layout

DESCRIPTION:  
2-S.F.N.P. (SINGLE FACE NETWORK POINT)  
3-S.F.N.P. (ELECTRIC MULTIPOWER POINT)  
4-CAMERA (INDOOR)  
5-CAMERA (OUTDOOR)



**ANNEXURE "F" SIEHS – MATIARI STATION**

S. NO.	DESCRIPTION	QTY	UOM
<b>BOQ MATIARI STATION REFURBISHMENT WORK - CIVIL, CARPENTARY WORK</b>			
1	Applying 2 Coats of Plastic emulsion Paint i/c primary coat of chalk and preparing base surface and filling where as required specifications etc complete in all respects as per SIEHS authorized person (Nelson / Reliance / GOBIS / Glamour)	5000	Sft
2	Removing or scraping oil and distemper from walls i/c removal rubbish materials from site,	5000	Sft
3	Doors Shutter 1-1/2" thick Teak wood ply shutters (Partially glazed with frost glass where as required) over first class partial wood skeleton (Solid) styles and rails core of partial wood and Teak ply wood (3 ply) on both sides including hold fasts, hinges, iron tower bolts, handles and cleats with cord etc complete in all respects	250	Sft
4	Providing and fixing G.I. Sheet chowkats of 18 gauge for doors i/c pouring C.C. 1:2:4 inside chowkat etc: complete in all respect.		
i	2'-6" x 7'	42	Rft
ii	3'-3" x 7'	42	Rft
iii	3'-6" x 7'	42	Rft
5	Providing & Installation of Fiber Shade with iron rectangular pipe for Oxygen Cylinder / Generator / Medical dustbins, Rectangular pipe size 1 1/2" X 1" gauge 22, fiber thickness 2mm	250	Sft
6	Providing Fiber tank 500 US Gallons L: 88 inch X W: 47 inch X H: 48 inch MASTER 5 year warranty	2	Each
7	Providing & Installation of 1/2" th lamination top Kitchen Cabinets with door shutter edges pvc finish, center partition, locks, hinges handles size L6' X H2'-0" X D1'-6"	50	Sft
8	Providing & Installation of 1/2" th lamination base Kitchen Cabinets with partial framing 1-1/2"x2" door shutter edges pvc finish, center partition, locks, hinges handles size L6' X H3'X D2'	65	Sft
9	M.S.Angle iron ramp for ambulance washing purpose 14 gauge angle iron size 2" total length 7' X 2' High 1'-6" slope 4' X 2' Rest area 3' X 2'	2	L/S

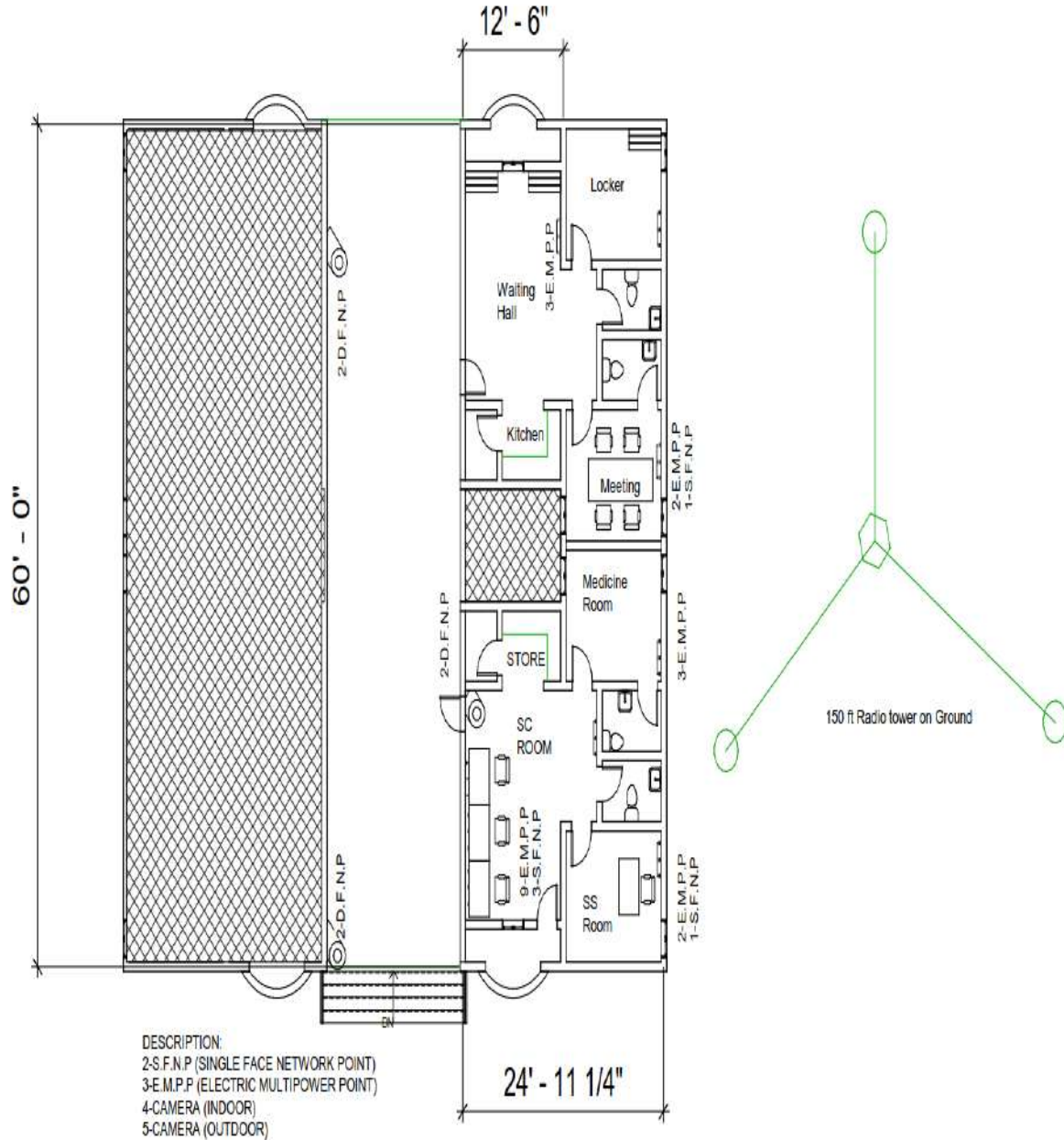
10	Removal of bushes and debris from facility nearby surrounding	1	L/S
11	Providing & Installation of Window Roller Blinds SKU: 11fd965d6852 Fabric thickness 0.22mm , 0.15-longer life and durability of fabric , multiple washes Color shade will provide vendor for selection	400	Sft
12	RCC COLUMNS FOR GATE (1:2:4) :- Providing and Laying in position Reinforced cement concrete machine mixed and machine vibrated design mix cement concrete of below specified grade for structural elements, reinforced cement concrete using crushed stone graded aggregate 3/4" (19mm) and down gauge and bolari sand as per specification having a minimum works cylinder crushing strength of 3500 psi at 28 days with a mix not leaner than (1:2:4) including fair face form work and its removal, compacting, leveling and curing & housekeeping etc. includes reinforcement of columns, Slab & beams see drawing All work complete as shown in drawing, notes, & in all respect as per technical specification & directed by by SIEHS Nominated Person.	96	CFT
13	Main gate MS (15'x7')Providing & Installation of main entrance iron gate 16 gauge square pipe frame size of pipe 1.5" inch X 1.5" inch with 18 gauge ms sheet complete with red oxide, paint, hinges & all accessories	1	L/S
<b>BOQ MATIARI STATION REFURBISHMENT WORK - PLUMBING</b>			
1	Providing & fixing 24" x 18" bavelled edge mirror of glass complete with glass shelf, 1/8" thick hard board and C.P screws fixed to wooden pleat. (Superior Quality)	4	No.
2	Providing & fixing chrome plated brass towel rail complete with brackets fixing on wooden cleats with 1" long C.P brass screws. (Superior Quality) 24" Long	4	No.
4	Providing and fixing Asian W.C Orisa type white or color glazed with low level flush tank/cistern connecting pipe and all accessories, filling, waste, traps, CP flexible pipe, T-stop cock as per approved sample of Master or equivalent brand with check nuts all joints plugging and screwing as necessary to the structure with pedestal etc. i/c making requisite number of hole in wall plinth and floor and making good in cement concrete 1:2:4. Complete in all respect and to the entire.	4	No.

5	Providing & fixing lavatory basin with mixture in white glazed earthenware complete with & i/c the cost of W. I. Or C. I. Cantilever brackets 6inches built into walls, painted white in 2 casts after a primary coat of redlead paint, a pair of 1/2" dia chrome plated pillar traps 1-1/2" rubber plug & chrome brass waste of approved pattern 1-1/4" dia malleable iron or c.p. brass traps, malleable iron or brass unions and making requisite number of holes in walls plinth and floor for pipe connection & making good in cement concrete 1: 2: 4. (Foreign or Equivalent).	4	No.
6	Providing & Fixing Muslim Shower with Double Bib Cock (Master)(Sanitary Item)	4	No.
7	Providing & Fixing Single Tap with Crystal Head 1/2 Dia. (Sanitary Item)	4	No.
8	Providing and fixing side pillar cock 1/2" dia approved quality make	4	No.
9	Providing and fixing waste Jali stainless steel 6" x 6"	8	No.
10	Providing & Fixing Schedule 40 UPVC pipe with special fitting		
a	1/2" dia	8	No.
b	3/4" dia	12	No.
c	1" dia	0	No.
d	1-1/4" dia	20	No.
e	3" dia	8	No.
11	Providing & Fixing Y-Tee 3" Dia	6	No.
12	Providing & Fixing Elbow 3" Dia 45°	6	No.
13	Providing & fixing Bend 90° 3" Dia	6	No.
14	Providing & fixing Air Pipe Cap/Caval 3" Dia	6	No.
15	Complete Drainage System		
a	Providing & installation of service manhole chamber size 2' X 2' X 3' complete with drainage cover & plaster	3	Nos
b	Providing & laying 6" dia PVC pipe for sewerage line with all necessary fittings	100	Rft

c	Providing ambulance washing area drainage chamber with iron grill cover size 24" X 24" angle iron size 1 1/2" X 1 1/2" 16 gauge with red oxide & paint.	1	No
d	Providing & installation of water supply connection with 1/2" handle valve for ambulance washing	15	rft
<b>BOQ MATIARI STATION REFURBISHMENT WORK - IT INFRASTRUCTURE</b>			
1	Passive Networking: Supply Cat6 (3M, Schneider equivalent) installation at both end (user IO and patch panel) conduit, conduit fitting, boxes, back boxes, termination & all necessary accessories and fitting to complete the work. Vendor will provide and installation of 24 port patch panel (cat6), two eight socket PDU, Rack harnessing including data/ surveillance points testing and tagging. Dual face plate will be used in surveillance points and attendance device. Single face plate will be used in Desktop connections, printer point and supervisor desk.	25	Nos.
2	Supply & Installation of Patch Panel - 24 Port	1	Nos.
3	Supply & Installation PDU - 8 socket	2	Nos.
4	Supply & Installation Outdoor Weather shield protective cover for Camera	3	Nos.
<b>BOQ MATIARI REFURBISHMENT WORK - ELECTRICAL</b>			
1	Light Control Switches : Six/Four Gang 10/13A switch face plate for lighting control with back box, pvc conducting fitting complete in all aspects	16	Nos.
2	Supply & Installation of MDB	1	No.
3	Supply & Installation of MCCB/TP 150 Amp (04 pole)(Breaker Schneider / Hager)	2	Nos.
4	Supply & Installation of 20Amp Breaker (Single Pole)(Breaker Schneider / Hager)	4	Nos.
5	Supply & Installation of 16 Amp Breaker (Single Pole)(Breaker Schneider / Hager)	6	Nos.
6	Supply & Installation of 10 Amp Breaker (Single Pole)(Breaker Schneider / Hager)	8	No.

7	Reorganize & modify existing distribution board as per total electrical load, including Neutral, Earth Bar & Indication Lamps	1	Job
8	Supply & Installation 13A 2pin switch socket outlet Clipsal/ Schneider /Orange or approved Equivalent wiring conduiting where needed complete with all respect	10	Nos.
9	Supply & Installation 13A multi / universal switch socket outlet Clipsal/ Schneider /Orange or Equivalent and its necessary wiring conduiting where needed complete with all respect	12	Nos.
10	Wiring for light and fans point 3/0.29 in channel patti (Pakistan Cables / Fast Cables/Newage or approved Equivalent)	26	Nos.
11	Wiring for mains with 2-7/.029 PVC wire on PVC casting and capping. (Pakistan Cables / Fast Cables/Newage or approved Equivalent)	6	Nos.
12	Wiring for main 2-7/0.44 PVC wire in casing capping	3	Nos.
13	Supply & installation of PVC conduit with accessories embed in wall / floor / ceiling or surface installed. Conduit size:1" dia , new wiring is inclusive of conduiting work.	300	RFT
14	Supply, laying & termination of 04 Core 16mm <sup>2</sup> cable for main to MDB (Pakistan Cables / Fast Cables/Newage or approved Equivalent) complete in all respect.	50	RFT
15	Supply & installation of LED Light and its fixture ring holder lights. (Philips/Osaka/Tuff or approved equivalent)	20	Nos.
16	Supply & Installation of ceiling fans 56" (Pak Fan/Royal fan or approved Equivalent)	6	Nos.
17	Supply & Installation of ceiling bracket fan 22" (Pak Fan/Royal fan or approved Equivalent)	3	Each
18	Supply & Installation of Exhaust fan 12"x12" (Pak Fan/Royal fan or approved Equivalent)	3	Nos

**VOLUME "VI" SIEHS – MATIARI STATION**



SIEHS AMBULANCE STATION MATIARI PROPOSED LAYOUT

**ANNEXURE "G" SIEHS – SANGHAR STATION**

S. NO.	DESCRIPTION	QTY	UOM
<b>BOQ SANGHAR STATION REFURBISHMENT WORK - CIVIL, PLUMBING &amp; CARPENTRY WORK</b>			
1	Providing and laying Class 'D' 1:3:6 cement concrete Solid Block Masonry wall 4" to 8" in thickness and above set in 1:6 cement sand mortar in ground floor superstructure i/c racking of joints and curing, etc, complete.(Minimum crushing strength 1300-lbs/P.S.I)		
	100 mm Thick	800	Sq. ft
2	Plaster walls (1:4):- Providing and rendering 16mm thick cement mortar finish in double layer 1:4 (1 cement : 4 fine sand) using screened clean sand on internal surfaces of bricks or concrete surfaces including providing neeru finish to a thickness of about 1.5mm finished smooth with steel trowel including preparation of surface ,curing etc at all levels /heights & locations complete as specified and directed by SIEHS Nominated Person.	1600	Sft
3	Applying 2 Coats of Plastic emulsion Paint i/c primary coat of chalk and preparing base surface and filling where as required specifications etc complete in all respects as per SIEHS authorized person (Nelson / Reliance / GOBIS / Glamour)	6000	Sq.ft
4	RCC COLUMNS FOR GATE (1:2:4) :- Providing and Laying in position Reinforced cement concrete machine mixed and machine vibrated design mix cement concrete of below specified grade for structural elements, reinforced cement concrete using crushed stone graded aggregate 3/4" (19mm) and down gauge and bolari sand as per specification having a minimum works cylinder crushing strength of 3500 psi at 28 days with a mix not leaner than (1:2:4) including fair face form work and its removal, compacting, leveling and curing & housekeeping etc. includes reinforcement of columns, Slab & beams see drawing All work complete as shown in drawing, notes, & in all respect as per technical specification & directed by by SIEHS Nominated Person.	96	Cft
5	Main gate MS (15'x7') Providing & Installation of main entrance iron gate 16 gauge square pipe frame size of pipe 1.5" inch X 1.5" inch with 18 gauge ms sheet complete with red oxide, paint, hinges & all accessories.	1	Nos



6	Doors Shutter 1-1/2" thick Teak wood ply shutters (Partially glazed with frost glass where as required) over first class partial wood skeleton (Solid) styles and rails core of partial wood and Teak ply wood (3 ply) on both sides including hold fasts, hinges, iron tower bolts, handles and cleats with cord etc complete in all respects	400	Sq.ft
7	Providing and fixing G.I. Sheet chowkats of 18 gauge for doors i/c pouring C.C. 1:2:4 inside chowkat etc: complete in all respect.		
a	2'-6" x 7'	34	Rft
b	3'-3" x 7'	34	Rft
c	3'-6" x 7'	34	Rft
8	Providing & Installation of Fiber Shade with iron rectangular pipe for Oxygen Cylinder / Generator / Medical dustbins, Rectangular pipe size 1 1/2" X 1" gauge 22, fiber thickness 2mm	500	Sq.ft
9	Providing & fixing aluminum partition with door size 3'x7' & 5'x7' section 4" wide with 5mm /one side vision glass including lock, handle with all respect accessories etc complete of size 10'x8'	200	Sft
10	Providing Fiber tank 500 US Gallons L: 88 inch X W: 47 inch X H: 48 inch MASTER 5 year warranty	1	Each
11	Removal of bushes and debris from facility nearby surrounding	1	L/S
12	Providing & Installation of 1/2" th lamination top Kitchen Cabinets with door shutter edges pvc finish, center partition, locks, hinges handles size L6' X H2'-0" X D1'-6"	30	Sq.ft
13	Providing & Installation of 1/2" th lamination base Kitchen Cabinets with partial framing 1-1/2"x2" door shutter edges pvc finish, center partition, locks, hinges handles size L6' X H3'X D2'	40	Sq.ft
14	Kitchen Marble Top 2'x8' with sink size W2'-3" X L6'	21	Sq.ft
15	M.S.Angle iron ramp for ambulance washing purpose 14 gauge angle iron size 2" total length 7' X 2' High 1'-6" slope 4' X 2' Rest area 3' X 2'	2	L/S
<b>BOQ SANGHAR STATION REFURBISHMENT WORK - PLUMBING</b>			
1	Providing & fixing 24" x 18" beveled edge mirror of glass complete with glass shelf, 1/8" thick hard board and C.P screws fixed to wooden pleat. (Superior Quality)	4	No.

2	Providing & fixing chrome plated brass towel rail complete with brackets fixing on wooden cleats with 1" long C.P brass screws. (Superior Quality) 24" Long	4	No.
4	Providing and fixing Asian W.C Orisa type white or color glazed with low level flush tank/cistern connecting pipe and all accessories, filling, waste, traps, CP flexible pipe, T-stop cock as per approved sample of Master or equivalent brand with check nuts all joints plugging and screwing as necessary to the structure with pedestal etc. i/c making requisite number of hole in wall plinth and floor and making good in cement concrete 1:2:4. Complete in all respect and to the entire.	4	No.
5	Providing & fixing lavatory basin with mixture in white glazed earthenware complete with & i/c the cost of W. I. Or C. I. Cantilever brackets 6inches built into walls, painted white in 2 casts after a primary coat of redlead paint, a pair of 1/2" dia chrome plated pillar traps 1-1/2" rubber plug & chrome brass waste of approved pattern 1-1/4" dia malleable iron or c.p. brass traps, malleable iron or brass unions and making requisite number of holes in walls plinth and floor for pipe connection & making good in cement concrete 1: 2: 4. (Foreign or Equivalent).	4	No.
6	Providing & Fixing Muslim Shower with Double Bib Cock (Master)(Sanitary Item)	4	No.
7	Providing & Fixing Single Tap with Crystal Head 1/2 Dia. (Sanitary Item)	4	No.
8	Providing and fixing side pillar cock 1/2" dia approved quality make	4	No.
9	Providing and fixing waste Jali stainless steel 6" x 6"	8	No.
10	Providing & Fixing Schedule 40 UPVC pipe with special fitting		
a	1/2" dia	8	No.
b	3/4" dia	12	No.
c	1" dia	0	No.
d	1-1/4" dia	20	No.
e	3" dia	8	No.
11	Providing & Fixing Y-Tee 3" Dia	6	No.
12	Providing & Fixing Elbow 3" Dia 45°	6	No.



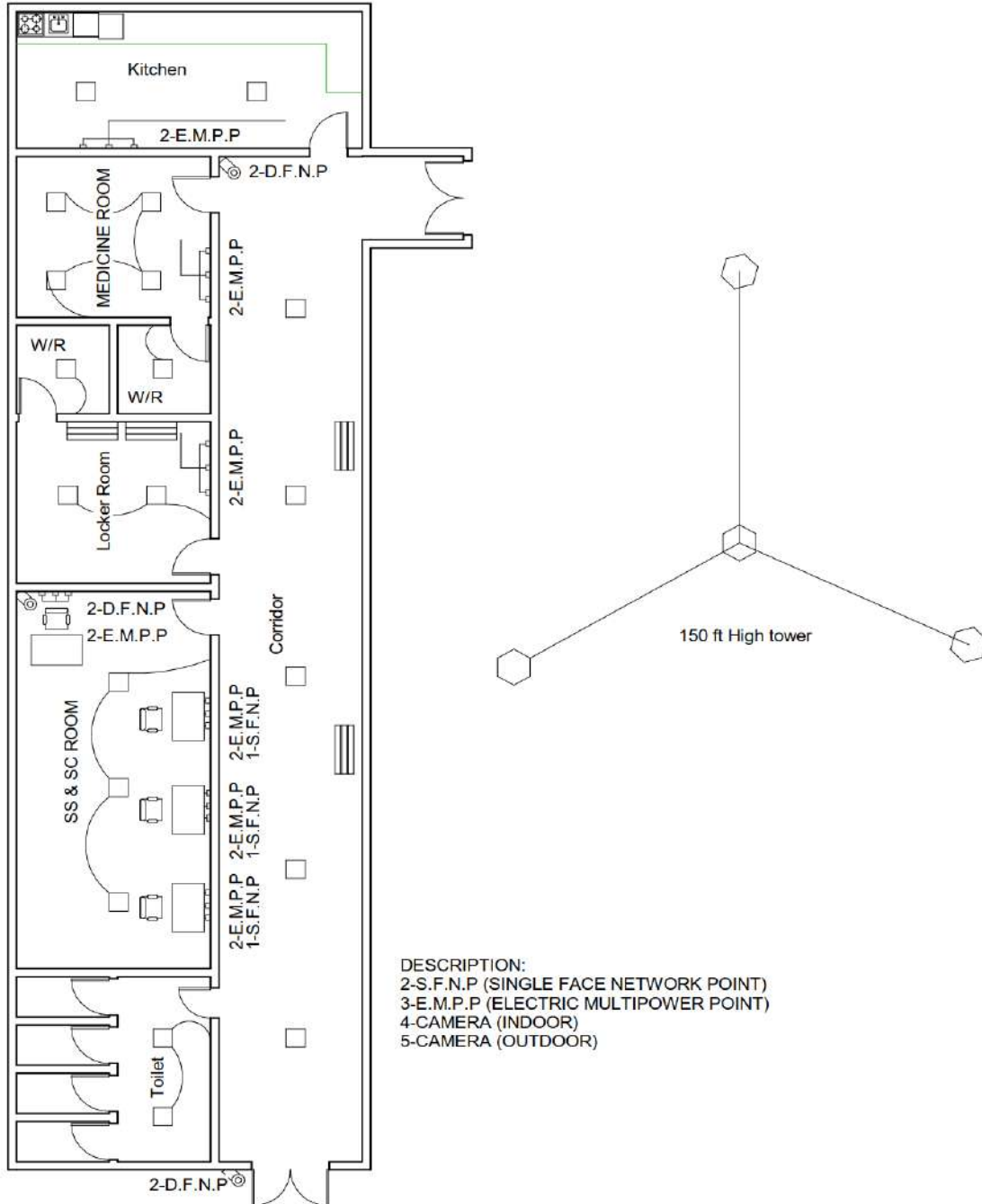
**SINDH INTEGRATED EMERGENCY AND HEALTH SERVICES  
TENDER DOCUMENTS**

**REFURBISHMENT  
WORKS AT SIEHS  
STATIONS IN SINDH  
Tender # 84-2023**

13	Providing & fixing Bend 90° 3" Dia	6	No.
14	Providing & fixing Air Pipe Cap/Caval 3" Dia	6	No.
15	Complete Drainage System		
a	Providing & installation of service manhole chamber size 2' X 2' X 3' complete with drainage cover & plaster	3	Nos
b	Providing & laying 6" dia PVC pipe for sewerage line with all necessary fittings	100	Rft
c	Providing ambulance washing area drainage chamber with iron grill cover size 24" X 24" angle iron size 1 1/2" X 1 1/2" 16 gauge with red oxide & paint.	1	No
d	Providing & installation of water supply connection with 1/2" handle valve for ambulance washing	50	RFT
<b>BOQ SANGHARSTATION REFURBISHMENT WORK - IT INFRASTRUCTURE</b>			
1	Passive Networking: Supply Cat6 (3M, Schneider equivalent) installation at both end (user IO and patch panel) conduit, conduit fitting, boxes, back boxes, termination & all necessary accessories and fitting to complete the work. Vendor will provide and installation of 24 port patch panel (cat6), two eight socket PDU, Rack harnessing including data/ surveillance points testing and tagging. Dual face plate will be used in surveillance points and attendance device. Single face plate will be used in Desktop connections, printer point and supervisor desk.	30	Nos.
2	Supply & Installation of Patch Panel - 24 Port	1	Nos.
3	Supply & Installation PDU - 8 socket	2	Nos.
4	Supply & Installation Outdoor Weather shield protective cover for Camera	3	Nos.
<b>BOQ SANGHAR REFURBISHMENT WORK - ELECTRICAL</b>			
1	Light Control Switches : Six/Four Gang 10/13A switch face plate for lighting control with back box, pvc conducting fitting complete in all aspects	25	Nos.
2	Supply & Installation of MDB	1	No.

3	Supply & Installation of MCCB/TP 150 Amp (04 pole)(Breaker Schneider / Hager)	2	Nos.
4	Supply & Installation of 20Amp Breaker (Single Pole)(Breaker Schneider / Hager)	4	Nos.
5	Supply & Installation of 16 Amp Breaker (Single Pole)(Breaker Schneider / Hager)	6	Nos.
6	Supply & Installation of 10 Amp Breaker (Single Pole)(Breaker Schneider / Hager)	8	No.
7	Reorganize & modify existing distribution board as per total electrical load, including Neutral, Earth Bar & Indication Lamps	1	Job
8	Supply & Installation 13A 2pin switch socket outlet Clipsal/ Schneider /Orange or approved Equivalent wiring conduiting where needed complete with all respect	10	Nos.
9	Supply & Installation 13A multi / universal switch socket outlet Clipsal/ Schneider /Orange or Equivalent and its necessary wiring conduiting where needed complete with all respect	12	Nos.
10	Wiring for light and fans point 3/0.29 in channel patti (Pakistan Cables / Fast Cables/Newage or approved Equivalent)	26	Nos.
11	Wiring for mains with 2-7/.029 PVC wire on PVC casting and capping. (Pakistan Cables / Fast Cables/Newage or approved Equivalent)	6	Nos.
12	Wiring for main 2-7/0.44 PVC wire in casing capping	3	Nos.
13	Supply & installation of PVC conduit with accessories embed in wall / floor / ceiling or surface installed. Conduit size: 1" Dia, new wiring is inclusive of conduiting work	400	RFT
14	Supply, laying & termination of 04 Core 16mm <sup>2</sup> cable for main to MDB (Pakistan Cables / Fast Cables/Newage or approved Equivalent) complete with all respect	50	RFT
15	Supply & installation of LED Light and its fixture ring holder lights. (Philips/Osaka/Tuff or approved equivalent)	20	Nos.
16	Supply & Installation of ceiling fans 56" (Pak Fan/Royal fan or approved Equivalent)	6	Nos.
17	Supply & Installation of ceiling bracket fan 22" (Pak Fan/Royal fan or approved Equivalent)	3	Each
18	Supply & Installation of Exhaust fan 12"x12" (Pak Fan/Royal fan or approved Equivalent)	3	Nos

**VOLUME "VII" SIEHS – SANGHAR STATION**



SANGHAR PROPOSED LAYOUT

**ANNEXURE "H" SIEHS – SEHWAN STATION**

S. NO.	DESCRIPTION	QTY	UOM
<b>BOQ SEHWAN STATION REFURBISHMENT WORK - CIVIL, PLUMBING &amp; CARPENTRY WORK</b>			
1	PORCELAIN TILE flooring:-Supplying & laying approved colour and brand anti skid matt finished 1st quality ceramic tiles of minimum 6.50 mm thick and of size not less than 600mm x 600 mm for flooring including bedding layer of 20mm average thick in CM 1:5, laid to proper slope , line and level including cement floating of joints, polishing and cleaning , filling the joints with white cement mixed with matching colour pigment complete as directed by the SIEHS Nominated Person. Base price 3000/sqm	3000	Sft
2	Providing & Installation of Fiber Shade with 1 1/2" X 2" rectangular Iron framing mash size 3' X 3' Holding pillar 3" dia 16 gauge 10' height pipe with 2 mm UPVC wave sheet complete with red oxide & paint	250	Sft
3	Providing & fixing aluminum partition with door size 3'x7' & 5'x7' section 4" wide with 5mm /one side vision glass including lock, handle with all respect accessories etc complete of size 10'x8'	200	Sft
4	Repair hardware & paint of existing door,Repair Hardware includes Door closer, Door handles, Door locks, Door Hinges and apply aluminum kick plates 12" high.	4	NOS
5	M.S.Angle iron ramp for ambulance washing purpose 14 gauge angle iron size 2" total length 7' X 2' High 1'-6" slope 4' X 2' Rest area 3' X 2'	2	NOS
<b>BOQ SEHWAN STATION REFURBISHMENT WORK - PLUMBING</b>			
1	Providing & fixing 24" x 18" beveled edge mirror of glass complete with glass shelf, 1/8" thick hard board and C.P screws fixed to wooden pleat. (Superior Quality)	4	No.
2	Providing & fixing chrome plated brass towel rail complete with brackets fixing on wooden cleats with 1" long C.P brass screws. (Superior Quality) 24" Long	4	No.

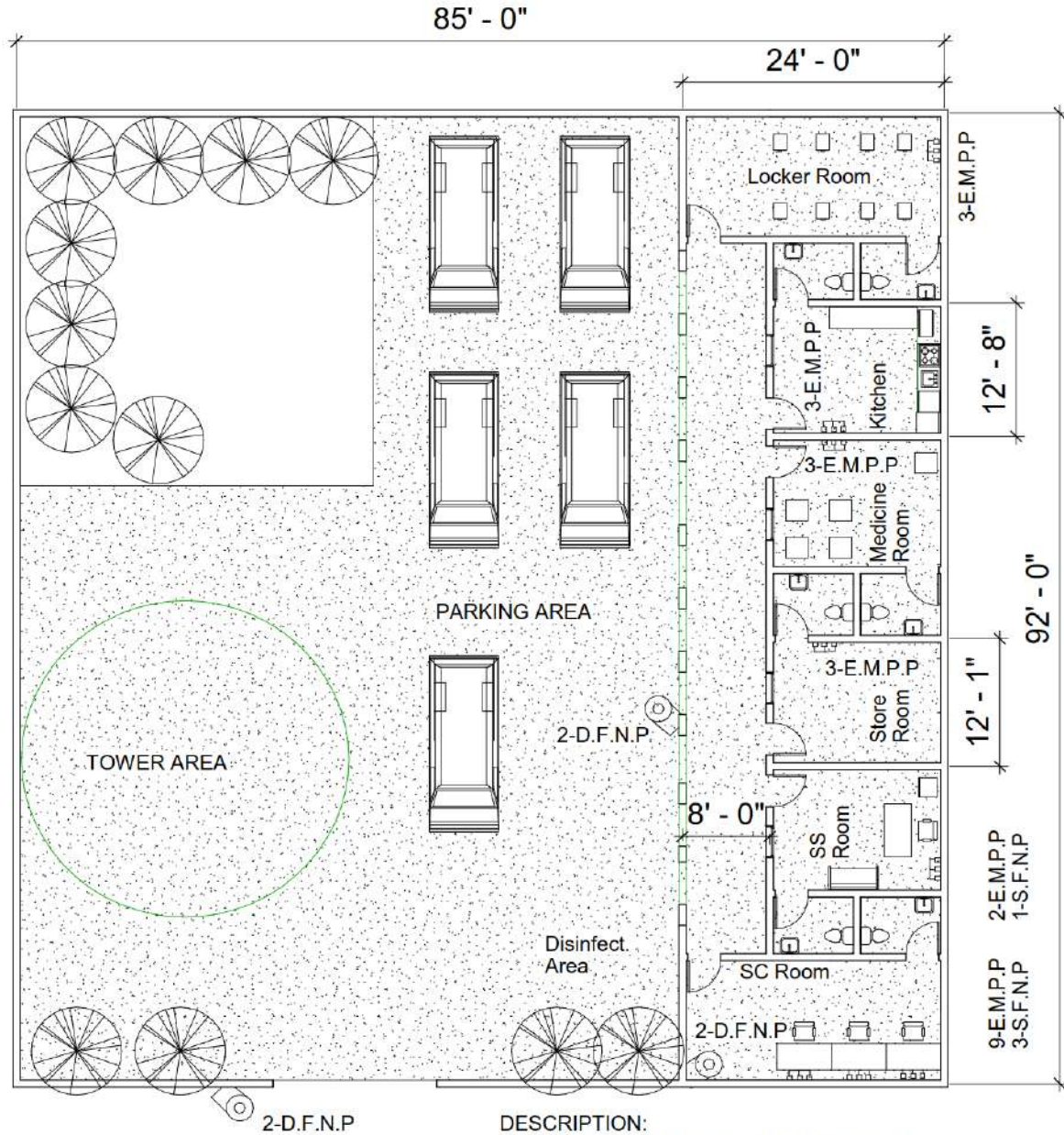
3	Providing and fixing Asian W.C Orisa type white or color glazed with low level flush tank/cistern connecting pipe and all accessories, filling, waste, traps, CP flexible pipe, T-stop cock as per approved sample of Master or equivalent brand with check nuts all joints plugging and screwing as necessary to the structure with pedestal etc. i/c making requisite number of hole in wall plinth and floor and making good in cement concrete 1:2:4. Complete in all respect and to the entire.	4	No.
4	Providing & fixing lavatory basin with mixture in white glazed earthenware complete with & i/c the cost of W. I. Or C. I. Cantilever brackets 6inches built into walls, painted white in 2 casts after a primary coat of redlead paint, a pair of 1/2" dia chrome plated pillar traps 1-1/2" rubber plug & chrome brass waste of approved pattern 1-1/4" dia malleable iron or c.p. brass traps, malleable iron or brass unions and making requisite number of holes in walls plinth and floor for pipe connection & making good in cement concrete 1: 2: 4. (Foreign or Equivalent).	6	No.
6	Providing & Fixing Muslim Shower with Double Bib Cock (Master)(Sanitary Item)	6	No.
7	Providing & Fixing Single Tap with Crystal Head 1/2 Dia. (Sanitary Item)	6	No.
8	Providing and fixing side pillar cock 1/2" dia approved quality make	6	No.
9	Providing and fixing waste Jali stainless steel 6" x 6"	6	No.
11	Providing & Fixing Schedule 40 UPVC pipe with special fitting		
a	1/2" dia	10	No.
b	3/4" dia	14	No.
c	1" dia	0	No.
d	1-1/4" dia	20	No.
e	3" dia	8	No.
12	Providing & Fixing Y-Tee 3" Dia	6	No.
13	Providing & Fixing Elbow 3" Dia 45°	6	No.
14	Providing & fixing Bend 90° 3" Dia	6	No.



15	Providing & fixing Air Pipe Cap/Caval 3" Dia	6	No.
16	Complete Drainage System		
a	Providing & installation of service manhole chamber size 2' X 2' X 3' complete with drainage cover & plaster	4	Nos
b	Providing & laying 6" dia PVC pipe for sewerage line with all necessary fittings	120	Rft
c	Providing ambulance washing area drainage chamber with iron grill cover size 24" X 24" angle iron size 1 1/2" X 1 1/2" 16 gauge with red oxide & paint.	1	No
d	Providing & installation of water supply connection with 1/2" handle valve for ambulance washing	45	Rft
<b>BOQ SEHWAN STATION REFURBISHMENT WORK - IT INFRASTRUCTURE</b>			
1	Passive Networking: Supply Cat6 (3M, Schneider equivalent) installation at both end (user IO and patch panel) conduit, conduit fitting, boxes, back boxes, termination & all necessary accessories and fitting to complete the work. Vendor will provide and installation of 24 port patch panel (cat6), two eight socket PDU, Rack harnessing including data/ surveillance points testing and tagging. Dual face plate will be used in surveillance points and attendance device. Single face plate will be used in Desktop connections, printer point and supervisor desk. Three iron rod stand/ shade required for outdoor cams.	25	Nos.
2	Supply & Installation of Patch Panel - 24 Port	1	Nos.
3	Supply & Installation PDU - 8 socket	2	Nos.
4	Supply & Installation Outdoor Weather shield protective cover for Camera	3	Nos.
<b>BOQ SEHWAN STATION REFURBISHMENT WORK - ELECTRICAL</b>			
1	Light Control Switches : Six/Four Gang 10/13A switch face plate for lighting control with back box, pvc conducting fitting complete in all aspects	20	Nos.
2	Supply & Installation of MDB	1	No.
3	Supply & Installation of MCCB/TP 150 Amp (04 pole)(Breaker Schneider / Hager)	2	Nos.

4	Supply & Installation of 20Amp Breaker (Single Pole)(Breaker Schneider / Hager)	4	Nos.
5	Supply & Installation of 16 Amp Breaker (Single Pole)(Breaker Schneider / Hager)	6	Nos.
6	Supply & Installation of 10 Amp Breaker (Single Pole)(Breaker Schneider / Hager)	8	No.
7	Reorganize & modify existing distribution board as per total electrical load, including Neutral, Earth Bar & Indication Lamps	1	Job
8	Supply & Installation 13A 2pin switch socket outlet Clipsal/ Schneider /Orange or approved Equivalent wiring conduiting where needed complete with all respect	10	Nos.
9	Supply & Installation 13A multi / universal switch socket outlet Clipsal/ Schneider /Orange or Equivalent	12	Nos.
10	Wiring for light and fans point 3/0.29 in channel patti (Pakistan Cables / Fast Cables/Newage or approved Equivalent)	26	Nos.
11	Wiring for mains with 2-7/.029 PVC wire on PVC casting and capping. (Pakistan Cables / Fast Cables/Newage or approved Equivalent)	6	Nos.
12	Wiring for main 2-7/0.44 PVC wire in casing capping	3	Nos.
13	Supply & installation of PVC conduit with accessories embed in wall / floor / ceiling or surface installed. Conduit size 1 inch dia, new wiring is inclusive of conduiting work	250	RFT
14	Supply, laying & termination of 04 Core 16mm <sup>2</sup> cable for main to MDB (Pakistan Cables / Fast Cables/Newage or approved Equivalent) complete with all respect	50	RFT
15	Supply & installation of LED Light and its fixture ring holders (Philips/Osaka/Tuff or approved equivalent)	20	Nos.
16	Supply & Installation of ceiling fans 56" (Pak Fan/Royal fan or approved Equivalent)	6	Nos.
17	Supply & Installation of ceiling bracket fan 22" (Pak Fan/Royal fan or approved Equivalent)	3	Each
18	Supply & Installation of Exhaust fan 12"x12" (Pak Fan/Royal fan or approved Equivalent)	3	Nos

**VOLUME "VIII" SIEHS – SEHWAN STATION**



**DESCRIPTION:**  
 1-S.F.N.P (SINGLE FACE NETWORK POINT)  
 2-E.M.P.P (ELECTRIC MULTIPOWER POINT)  
 3-CAMERA (INDOOR)  
 4-CAMERA (OUTDOOR)

JAMSHORO DISTRICT SEHWAN AMBULANCE STATION

**ANNEXURE "1" SIEHS – DADU STATION**

S. NO.	DESCRIPTION	QTY	UOM
<b>BOQ DADU STATION REFURBISHMENT WORK - CIVIL, PLUMBING &amp; CARPENTARY WORK</b>			
1	Dismantling of Existing Block Masonry and disposal of rubbish materials by mean of any vehicle	100	Cft
2	Dismantling of Existing flooring /skirting i/c C.C layer and disposal of rubbish materials by mean of any vehicle	180	Cft
3	Providing and laying Class 'D' 1:3:6 cement concrete Solid Block Masonry wall 4" to 8" in thickness and above set in 1:6 cement sand mortar in ground floor superstructure i/c racking of joints and curing, etc, complete.(Minimum crushing strength 1300-lbs/P.S.I)		
i	150 mm Thick	750	Sq. ft
4	Cement Plaster in Ratio 1:6 (15 mm Thick) i/c floating coat of cement in proper design & profile on walls/beams & columns. This rate also i/c providing expanded metal at the joint of R.C.C. Members and block masonry where as required etc complete in all respect as per specification and drawings and approval of SIEHS authorized person	1500	Sq.ft
5	Removing or scraping oil and distemper from walls i/c removal rubbish materials from site,	400	Sq.ft
6	Applying 2 Coats of Plastic emulsion Paint i/c primary coat of chalk and preparing base surface and filling where as required specifications etc complete in all respects as per SIEHS authorized person (Nelson / Reliance / GOBIS / Glamour)	4400	Sq.ft
i	In case of Grey structure - Applying 3 Coats of Plastic emulsion Paint i/c primary coat of chalk and preparing base surface and filling where as required specifications etc complete in all respects as per SIEHS authorized person (Nelson / Reliance / GOBIS / Glamour)	200	Sq.ft
ii	In case of Grey structure - Applying 3 Coats of weathershield Plastic emulsion Paint i/c primary coat of chalk and preparing base surface and filling where as required specifications etc complete in all respects as per SIEHS authorized person (Nelson / Reliance / GOBIS / Glamour)	1650	Sq.ft
7	Preparing surface and painting Doors and Windows any type including edges (Iron or wooden or partially glazed).	250	Sq.ft

8	Providing & fixing cement paving block flooring having Size of Pavers,60mm thick & 100 X 200 Shape in a specified pattern and design with the combination of natural colour and colored blocks, having strength b/w 4000 lbs. / Sq.ft to 6000 lbs. / Sft over 2" thick compact bed of crush ash i/c filling the joints with river sand and also i/c proper compaction with compactor as per instruction given by SIEHS authorized person	5000	Sq.ft
9	Providing and fixing (elephant brand) gypsum false ceiling 2'x2' with aluminum channel framing imported. etc.	1600	Sq. ft
11	Providing & fixing aluminum partition with kick plate section 4" wide with 6mm /plain glass including lock, handle with all respect accessories etc complete.	200	Sq. ft
	Providing and fixing Printed Granite Porcelain Tiles Flooring jointed in white cement and laid over bed of 1"to 2" thick grey cement concrete bed in ratio 1:2:4 i/c washing / filling of joints with white cement etc: complete in all respect (Imported Premium Quality - Shabbir / Master 24 x 24 inch)		
12	Flooring	600	Sq.ft
13	Providing & Installation of Window Roller Blinds SKU: 11fd965d6852 Fabric thickness 0.22mm , 0.15-longer life and durability of fabric , multiple washes Color shade will provide vendor for selection	650	Sq.ft
14	Providing & Installation of Fiber Shade with iron rectangular pipe for Oxygen Cylinder / Generator / Medical dustbins, Rectangular pipe size 1 1/2" X 1" gauge 22, fiber thickness 2mm	500	Sq.ft
15	Providing & Installation of main entrance iron gate 16 gauge square pipe frame size of pipe 1.5" inch X 1.5" inch with 18 gauge ms sheet complete with red oxide, paint, hinges & all accessories	1	Nos
16	Installation of Concrete colum size 12" X 12" X 6' for the holding of main iron gate	2	Nos
17	Providing & Installation of Wooden top Kitchen Cabinets size L6' X H2'-6" X D18"	30	Sq.ft
18	Providing & Installation of Wooden bottom Kitchen boxes size L6' X H3' X D24" with doors	40	Sq.ft
19	Kitchen Marble Top with sink size W2'-3" X L6'	21	Sq.ft
20	Installation of ambulance cc ramp for washing purpose total length 6' X 2' Hight 1'-6" slope 4' X 2' Rest area 2' X 2'	40	Cft



<b>BOQ DADU STATION REFURBISHMENT WORK - PLUMBING</b>			
1	Providing & fixing 24" x 18" bavelled edge mirror of glass complete with glass shelf, 1/8" thick hard board and C.P screws fixed to wooden pleat. (Superior Quality)		No.
2	Providing & fixing chrome plated brass towel rail complete with brackets fixing on wooden cleats with 1" long C.P brass screws. (Superior Quality) 24" Long		No.
4	Providing and fixing Asian W.C Orisa type white or color glazed with low level flush tank/cistern connecting pipe and all accessories, filling, waste, traps, CP flexible pipe, T-stop cock as per approved sample of Master or equivalent brand with check nuts all joints plugging and screwing as necessary to the structure with pedestal etc. i/c making requisite number of hole in wall plinth and floor and making good in cement concrete 1:2:4. Complete in all respect and to the entire.	4	No.
5	Providing & fixing lavatory basin with mixture in white glazed earthenware complete with & i/c the cost of W. I. Or C. I. Cantilever brackets 6inches built into walls, painted white in 2 casts after a primary coat of red lead paint, a pair of 1/2" dia chrome plated pillar traps 1-1/2" rubber plug & chrome brass waste of approved pattern 1-1/4" dia malleable iron or c.p. brass traps, malleable iron or brass unions and making requisite number of holes in walls plinth and floor for pipe connection & making good in cement concrete 1: 2: 4. (Foreign or Equivalent).	4	No.
6	Providing & Fixing Muslim Shower with Double Bib Cock (Master)(Sanitary Item)	4	No.
7	Providing & Fixing Single Tap with Crystal Head 1/2 Dia. (Sanitary Item)	4	No.
8	Providing and fixing side pillar cock 1/2" dia approved quality make	4	No.
9	Providing and fixing waste Jali stainless steel 6" x 6"	8	No.
11	Providing & Fixing Schedule 40 UPVC pipe with special fitting		
a	1/2" dia	8	No.
b	3/4" dia	12	No.
c	1" dia	0	No.
d	1-1/4" dia	20	No.

e	3" dia	8	No.
12	Providing & Fixing Y-Tee 3" Dia	6	No.
13	Providing & Fixing Elbow 3" Dia 45°	6	No.
14	Providing & fixing Bend 90° 3" Dia	6	No.
15	Providing & fixing Air Pipe Cap/Caval 3" Dia	6	No.
16	Complete Drainage System		
a	Providing & installation of service manhole chamber size 2' X 2' X 3' complete with drainage cover & plaster	3	Nos
b	Providing & laying 6" dia PVC pipe for sewerage line	100	Rft
c	Providing ambulance washing area drainage chamber with iron grill cover size 24" X 24" angle iron size 1 1/2" X 1 1/2" 16 gauge with red oxide & paint.	1	No
d	Providing & installation of water supply connection with 1/2" handle valve for ambulance washing	1	No
<b>BOQ DADUSTATION REFURBISHMENT WORK - IT INFRASTRUCTURE</b>			
1	<p>Passive Networking: Supply Cat6 (3M, Schneider equivalent) installation at both end (user IO and patch panel) conduit, conduit fitting, boxes, back boxes, termination &amp; all necessary accessories and fitting to complete the work.</p> <p>Vendor will provide and installation of 24 port patch panel (cat6), two eight socket PDU, Rack harnessing including data/ surveillance points testing and tagging.</p> <p>Dual face plate will be used in surveillance points and attendance device.</p> <p>Single face plate will be used in Desktop connections, printer point and supervisor desk.</p>	30	Nos.
2	Supply & Installation of Patch Panel - 24 Port	1	Nos.
3	Supply & Installation PDU - 8 socket	2	Nos.
4	Supply & Installation Outdoor Weather shield protective cover for Camera	3	Nos.

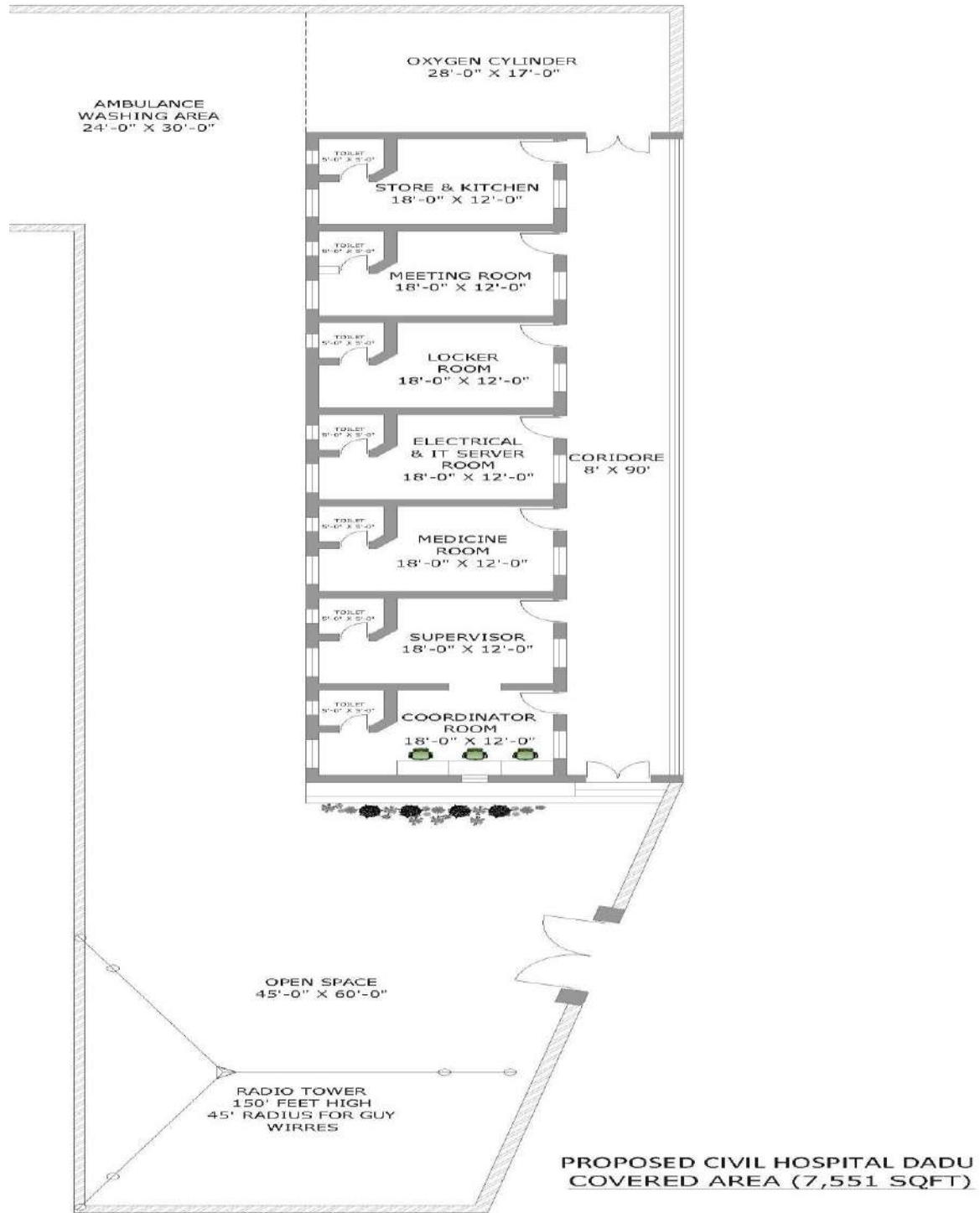


<b>BOQ DADU STATION REFURBISHMENT WORK - ELECTRICAL</b>			
1	Wiring for main 2-7/0.44 PVC wire in casing capping	12	Nos.
2	Wiring for mains with 2-7/.036 PVC wire with pvc conducting fitting complete in all aspects.	6	Nos.
3	Wiring for mains with 2-7/.029 PVC wire on PVC casting and capping.	6	Nos.
4	Supply & Installation of Ceiling Light 18 watt. (Philips/Osaka/Tuff or approved equivalent)	18	Nos.
5	Supply & Installation of Light fixture LED ring holder lights. (Philips/Osaka/Tuff or approved equivalent)	6	Nos.
6	Supply & Installation of Flood Light - 50 - Osaka / Tuff	2	Nos.
7	Supply & Installation of Flood Light - 25 - Osaka / Tuff	4	Nos.
8	Wiring for light and fans point 3/0.29 in channel patti	28	Nos.
9	Providing and Fixing Multi Socket Double 13 AMP (Clipsal)	10	Nos.
10	Multi Power Socket 13 AMP for Projector and Camera with conduits (Clipsal)	8	Nos.
11	Providing & installation of Network cat-6 cable (3M/Schneider or Equivalent for Data, Surveillance Camaras, Attendance and WIFI devices) laying, termination, tagging and testing at user end Chanel Patti laying, fixing and I/O punching(as per layout)	15	Nos.
12	Punchless Cat-6 io's	15	Nos.
13	IO Box for Data	15	Nos.
14	Single face plate for Data (3M/Schneider or Equivalent)	15	Nos.

15	Dual face plate for Data & Voice (3M/Schneider or Equivalent)	1	Nos.
16	Installation of Patch panel termination, tagging and testing	1	No.
17	Rack fixing and harnessing	1	No.
18	Contractor will provide Network diagram each site	1	Job.
19	Providing & fixing 16 AMP multi socket / power plug (Clipsal)	5	No.
20	Providing, installation, testing, commissioning and termination of following size of CU/PVC/PVC & CU/XLPE/PVC Cables for Distribution Board in PVCconduit/Cable Tray, including all accessories, Complete in all respect as per required.		
a	50mm 4-Core	0	Rft
b	25mm 4-Core	0	Rft
c	16mm 4-Core	120	Rft
d	16mm Single Core	0	Rft
e	10mm Single Core	0	Rft
f	6mm Two Core Wire	0	Rft
21	Fixing of Bracket & Ceiling Fans	9	Nos.
22	Supplying, testing & commissioning High ambient split type air conditions wall mounted with decorative grill electric-220 volt-50HZ, single phase capacity -12000Btu (1 Ton net capacity) out Door condenser tube 360 psi tested evaporator 180 psi tested operation condition ambient 55 celic use compressor (Rotary) T3 type tested on 60 celic use ambient. i/c making holes with diamond bit, nut, bolts including cartage etc complete in all respect. Make: Mitsubishi / Panasonic / Daikin / GREE / Haier / Kenwood, Country of Origin:Japan / KSA / USA or equivalent.	2	Nos.

23	Supplying, testing & commissioning High ambient split type air conditions wall mounted with decorative grill electric-220 volt-50HZ, single phase capacity -12000Btu (1.5 Ton net capacity) out Door condenser tube 360 psi tested evaporator 180 psi tested operation condition ambient 55 celic use compressor (Rotary) T3 type tested on 60 celic use ambient. i/c making holes with diamond bit, nut, bolts including cartage etc complete in all respect. Make: Mitsubishi / Panasonic /Daikin / GREE / Haier / Kenwood, Country of Origin:Japan / KSA / USA or equivalent.	0	Nos.
24	Installation with wall angle Rawal Bolt etc Complete	4	Nos.
25	Supplying & Installation Extra Control Wire 110/76 connecting for Outer Unit.	50	Rft
26	Channel patti 40 x 40	60	Rft
27	Channel patti 60 x 60	14	Rft
28	Supply. Installation & Testing of EFE-T Chemical Grounding System with 19mm dia having Heavy-duty Copper Rod 10 Ft. long filled with Soil Conditioning Material with 6" x 25 Ft. Deep Boring with heavy duty PVC Put within Coaster Silver Cover for air breathing with Brass Nuts and Bolts ready to use. up to Test Terminal. For Neutral Earthling the result should be less than 1 Ohm, Complete in all respect	2	No.
	Electrical MDB		
29	Providing of MDB AC With circuit Breaker Complete.1 Number MCCB/TP 100 Amp,10 Number 20Amp,10 Number 16 Amp,10 Number 10 Amp Including Neutral, Earth Bar & Indication Lamps.(Breaker Schnieder / Hager)	1	No.
i	Supply & Installation of MDB		
ii	Supply & Installation of MCCB/TP 100 Amp (04 pole)(Breaker Schneider / Hager)	1	No.
iii	Supply & Installation of 20Amp Breaker (Single Pole)(Breaker Schneider / Hager)	10	No.
iv	Supply & Installation of 16 Amp Breaker (Single Pole)(Breaker Schneider / Hager)	10	No.
v	Supply & Installation of 10 Amp Breaker (Single Pole)(Breaker Schneider / Hager)	10	No.

**VOLUME "IX" SIEHS – DADU STATION**



**ANNEXURE "J" SIEHS – NAUSHAHRO FEROZE STATION**

S. NO.	DESCRIPTION	QTY	UOM
<b>BOQ NAUSHAHRO FEROZE STATION REFURBISHMENT WORK - CIVIL, PLUMBING &amp; CARPENTARY WORK</b>			
1	CERAMIC TILE flooring:-Supplying & laying approved colour and brand anti skid matt finished 1st quality ceramic tiles of minimum 6.50 mm thick and of size not less than 600mm x 600 mm for flooring including bedding layer of 20mm average thick in CM 1:5, laid to proper slope , line and level including cement floating of joints, polishing and cleaning , filling the joints with white cement mixed with matching colour pigment complete as directed by the SIEHS Nominated Person. Base Price: 3000/Sqm	550	Sft
2	Providing & fixing cement paving block flooring having Size of Pavers,60mm thick & 100 X 200 Shape in a specified pattern and design with the combination of natural colour and colored blocks, having strength b/w 4000 lbs. / Sq.ft to 6000 lbs. / Sft over 2" thick compact bed of crush ash i/c filling the joints with river sand and also i/c proper compaction with compactor as per instruction given by SIEHS authorized person	5000	Sq.ft
3	Boundry PARTITION WALL Brick Masonry 1:4 : Providing supplying & fixing of 1st class brick masonry with SR cement complete work in all respect with proper finishing & curing with sweet water all work to be approved by SIEHS Nominated Person.	700	Cft
4	Plaster walls (1:4):- Providing and rendering 16mm thick cement mortar finish in double layer 1:4 (1 cement : 4 fine sand) using screened clean sand on internal surfaces of bricks or concrete surfaces including providing neeru finish to a thickness of about 1.5mm finished smooth with steel trowel including preparation of surface ,curing etc at all levels /heights & locations complete as specified and directed by SIEHS Nominated Person.	1000	Sft
5	Applying 2 Coats of Plastic emulsion Paint i/c primary coat of chalk and preparing base surface and filling where as required specifications etc complete in all respects as per SIEHS authorized person (Nelson / Reliance / GOBIS / Glamour)	4400	Sft
6	Doors Shutter 1-1/2" thick Teak wood ply shutters (Partially glazed with frost glass where as required) over first class partal wood skeleton (Solid) styles and rails core of partal wood and Teak ply wood (3 ply) on both sides including hold fasts, hinges, iron tower bolts, handles and cleats with cord etc complete in all respects	0	Sq.ft
7	Providing and fixing G.I. Sheet chowkats of 18 gauge for doors i/c pouring C.C. 1:2:4 inside chowkat etc: complete in all respect.	10	NOS

a	2'-6" x 7'	0	Rft
b	3'-3" x 7'		Rft
c	3'-6" x 7'	0	Rft
8	RCC COLUMNS FOR GATE (1:2:4) :- Providing and Laying in position Reinforced cement concrete machine mixed and machine vibrated design mix cement concrete of below specified grade for structural elements, reinforced cement concrete using crushed stone graded aggregate 3/4" (19mm) and down gauge and bolari sand as per specification having a minimum works cylinder crushing strength of 3500 psi at 28 days with a mix not leaner than (1:2:4) including fair face form work and its removal, compacting, leveling and curing & housekeeping etc. includes reinforcement of columns, Slab & beams see drawing All work complete as shown in drawing, notes, & in all respect as per technical specification & directed by by SIEHS Nominated Person.	96	Cft
9	Main gate MS 15'x7' Providing & Installation of main entrance iron gate 16 gauge square pipe frame size of pipe 1.5" inch X 1.5" inch with 18 gauge ms sheet complete with red oxide, paint, hinges & all accessories.	1	L.S
10	Providing & Installation of Fiber Shade with 1 1/2" X 2" rectangular Iron framing mash size 3' X 3' Holding pillar 3" dia 16 guage 10' height pipe with 2 mm UPVC wave sheet complete with red oxide & paint	250	Sft
11	Providing & fixing aluminum partition with door size 3'x7' & 5'x7' section 4" wide with 5mm /one side vision glass including lock, handle with all respect accessories etc complete of size 10'x8'	200	Sft
12	Providing Fiber tank 500 US Galons L: 88 inch X W: 47 inch X H: 48 inch MASTER 5 year warranty	2	Each
13	Providing & Installation of 1/2" th lamination top Kitchen Cabinets with door shutter edges pvc finish, center partition, locks, hinges handles size L6' X H2'-0" X D1'-6"	30	Sq.ft
14	Providing & Installation of 1/2" th lamination base Kitchen Cabinets with partal framing 1-1/2"x2" door shutter edges pvc finish, center partition, locks, hinges handles size L6' X H3'X D2'	40	Sq.ft
15	Providing/installing Kitchen Marble Top 2'6"x8' with sink size W2'-3" X L6'	21	Sq.ft

16	M.S.Angle iron ramp for ambulance washing purpose 14 gauge angle iron size 2" total length 7' X 2' High 1'-6" slope 4' X 2' Rest area 3' X 2'	2	L/S
17	Removal of bushes and debris from facility nearby surrounding	1	L/S
<b>BOQ NAUSHAHRO FEROZE STATION REFURBISHMENT WORK - PLUMBING</b>			
1	Providing & fixing 24" x 18" bavelled edge mirror of glass complete with glass shelf, 1/8" thick hard board and C.P screws fixed to wooden pleat. (Superior Quality)	6	No.
2	Providing & fixing chrome plated brass towel rail complete with brackets fixing on wooden cleats with 1" long C.P brass screws. (Superior Quality) 24" Long	6	No.
4	Providing and fixing Asian W.C Orisa type white or color glazed with low level flush tank/cistern connecting pipe and all accessories, filling, waste, traps, CP flexible pipe, T-stop cock as per approved sample of Master or equivalent brand with check nuts all joints plugging and screwing as necessary to the structure with pedestal etc. i/c making requisite number of hole in wall plinth and floor and making good in cement concrete 1:2:4. Complete in all respect and to the entire.	6	No.
5	Providing & fixing lavatory basin with mixture in white glazed earthenware complete with & i/c the cost of W. I. Or C. I. Cantilever brackets 6inches built into walls, painted white in 2 casts after a primary coat of red lead paint, a pair of 1/2" dia chrome plated pillar traps 1-1/2" rubber plug & chrome brass waste of approved pattern 1-1/4" dia malleable iron or c.p. brass traps, malleable iron or brass unions and making requisite number of holes in walls plinth and floor for pipe connection & making good in cement concrete 1: 2: 4. (Foreign or Equivalent).	6	No.
6	Providing & Fixing Muslim Shower with Double Bib Cock (Master)(Sanitary Item)	6	No.
7	Providing & Fixing Single Tap with Crystal Head 1/2 Dia. (Sanitary Item)	6	No.
8	Providing and fixing side pillar cock 1/2" dia approved quality make	6	No.
9	Providing and fixing waste Jali stainless steel 6" x 6"	6	No.
11	Providing & Fixing Schedule 40 UPVC pipe with special fitting		
a	1/2" dia	10	No.

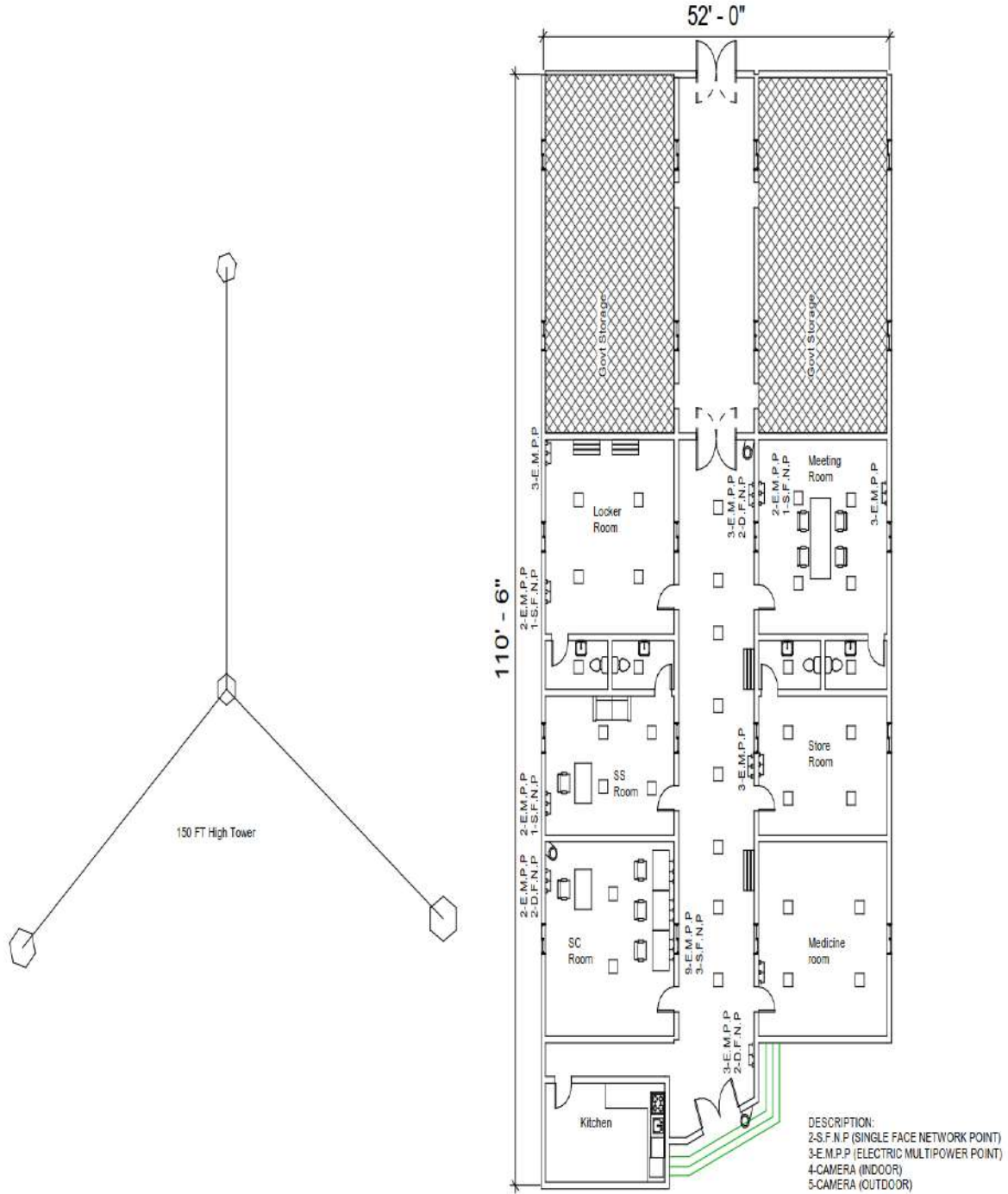


b	3/4" dia	14	No.
c	1" dia	0	No.
d	1-1/4" dia	20	No.
e	3" dia	8	No.
12	Providing & Fixing Y-Tee 3" Dia	6	No.
13	Providing & Fixing Elbow 3" Dia 45°	6	No.
14	Providing & fixing Bend 90° 3" Dia	6	No.
15	Providing & fixing Air Pipe Cap/Caval 3" Dia	6	No.
16	Complete Drainage System		
a	Providing & installation of service manhole chamber size 2' X 2' X 3' complete with drainage cover & plaster	4	Nos
b	Providing & laying 6" dia PVC pipe for sewerage line with all necessary fittings	120	Rft
c	Providing ambulance washing area drainage chamber with iron grill cover size 24" X 24" angle iron size 1 1/2" X 1 1/2" 16 gauge with red oxide & paint.	1	No
d	Providing & installation of water supply connection with 1/2" handle valve for ambulance washing	45	Rft
<b>BOQ NAUSHAHRO FEROZE STATION REFURBISHMENT WORK - IT INFRASTRUCTURE</b>			
1	Passive Networking: Supply Cat6 (3M, Schneider equivalent) installation at both end (user IO and patch panel) conduit, conduit fitting, boxes, back boxes, termination & all necessary accessories and fitting to complete the work. Vendor will provide and installation of 24 port patch panel (cat6), two eight socket PDU, Rack harnessing including data/ surveillance points testing and tagging. Dual face plate will be used in surveillance points and attendance device. Single face plate will be used in Desktop connections, printer point and supervisor desk.	25	Nos.
2	Supply & Installation of Patch Panel - 24 Port	1	Nos.

3	Supply & Installation PDU - 8 socket	2	Nos.
4	Supply & Installation Outdoor Weather shield protective cover for Camera	3	Nos.
<b>BOQ NAUSHAHRO FEROZE STATION REFURBISHMENT WORK - ELECTRICAL</b>			
1	Light Control Switches : Six/Four Gang 10/13A switch face plate for lighting control with back box, pvc conducting fitting complete in all aspects	26	Nos.
2	Supply & Installation of MDB	1	No.
3	Supply & Installation of MCCB/TP 150 Amp (04 pole)(Breaker Schneider / Hager)	2	Nos.
4	Supply & Installation of 20Amp Breaker (Single Pole)(Breaker Schneider / Hager)	10	Nos.
5	Supply & Installation of 16 Amp Breaker (Single Pole)(Breaker Schneider / Hager)	10	Nos.
6	Supply & Installation of 10 Amp Breaker (Single Pole)(Breaker Schneider / Hager)	10	No.
7	Reorganize & modify existing distribution board as per total electrical load, including Neutral, Earth Bar & Indication Lamps	1	Job
8	Supply & Installation 13A 2pin switch socket outlet Clipsal/ Schneider/Orange or approved Equivalent wiring conduiting where needed complete with all respect	15	Nos.
9	Supply & Installation 13A multi / universal switch socket outlet Clipsal/ Schneider/Orange or Equivalent and its necessary wiring conduiting where needed complete with all respect	15	Nos.
10	Wiring for light and fans point 3/0.29 in channel patti (Pakistan Cables / Fast Cables/Newage or approved Equivalent)	30	Nos.
11	Wiring for mains with 2-7/.029 PVC wire on PVC casting and capping. (Pakistan Cables / Fast Cables/Newage or approved Equivalent)	6	Nos.
12	Wiring for main 2-7/0.44 PVC wire in casing capping	3	Nos.

13	Supply & installation of PVC conduit with accessories embed in wall / floor / ceiling or surface installed. Conduit size:1" Dia, new wiring is inclusive of conduiting work	200	RFT
14	Supply, laying & termination of 04 Core 16mm <sup>2</sup> cable for main to MDB (Pakistan Cables / Fast Cables/Newage or approved Equivalent) complete with all respect	50	RFT
15	Supply & installation of LED Light and its fixture ring holder lights. (Philips/Osaka/Tuff or approved equivalent)	20	Nos.
16	Supply & Installation of ceiling fans 56" (Pak Fan/Royal fan or approved Equivalent)	12	Nos.
17	Supply & Installation of ceiling bracket fan 22" (Pak Fan/Royal fan or approved Equivalent)	6	Each
18	Supply & Installation of Exhaust fan 12"x12" (Pak Fan/Royal fan or approved Equivalent)	6	Nos

**VOLUME "X" SIEHS – NAUSHAHRO FEROZE STATION**



SIEHS Ambulance Station Naushahro Feroze Proposed Layout

**ANNEXURE "K" SIEHS – KHAIRPUR (HINGORJA) STATION**

S. NO.	DESCRIPTION	QTY	UOM
<b>BOQ KHAIRPUR (HINGORJA) STATION REFURBISHMENT WORK - CIVIL, PLUMBING &amp; CARPENTARY WORK</b>			
1	CERAMIC TILE flooring:-Supplying & laying approved colour and brand anti skid matt finished 1st quality ceramic tiles of minimum 6.50 mm thick and of size not less than 600mm x 600 mm for flooring including bedding layer of 20mm average thick in CM 1:5, laid to proper slope , line and level including cement floating of joints, polishing and cleaning , filling the joints with white cement mixed with matching colour pigment complete as directed by the SIEHS Nominated Person. Base Price: 3000/Sqm	4000	Sft
2	Providing & fixing cement paving block flooring having Size of Pavers,60mm thick & 100 X 200 Shape in a specified pattern and design with the combination of natural colour and colored blocks, having strength b/w 4000 lbs. / Sq.ft to 6000 lbs. / Sft over 2" thick compact bed of crush ash i/c filling the joints with river sand and also i/c proper compaction with compactor as per instruction given by SIEHS authorized person	5000	Sq.ft
4	Plaster walls (1:4):- Providing and rendering 16mm thick cement mortar finish in double layer 1:4 (1 cement : 4 fine sand) using screened clean sand on internal surfaces of bricks or concrete surfaces including providing neeru finish to a thickness of about 1.5mm finished smooth with steel trowel including preparation of surface ,curing etc at all levels /heights & locations complete as specified and directed by SIEHS Nominated Person.	1000	Sft
5	Applying 2 Coats of Plastic emulsion Paint i/c primary coat of chalk and preparing base surface and filling where as required specifications etc complete in all respects as per SIEHS authorized person (Nelson / Reliance / GOBIS / Glamour)	1500	Sft
6	Doors Shutter 1-1/2" thick Teak wood ply shutters (Partially glazed with frost glass where as required) over first class partal wood skeleton (Solid) styles and rails core of partal wood and Teak ply wood (3 ply) on both sides including hold fasts, hinges, iron tower bolts, handles and cleats with cord etc complete in all respects	168	Sq.ft
7	Providing and fixing G.I. Sheet chowkats of 18 gauge for doors i/c pouring C.C. 1:2:4 inside chowkat etc: complete in all respect.		
a	2'-6" x 7'	66	Rft

b	3'-6" x 7'	70	Rft
10	Providing & Installation of Fiber Shade with 1 1/2" X 2" rectangular Iron framing mash size 3' X 3' Holding pillar 3" dia 16 gauge 10' height pipe with 2 mm UPVC wave sheet complete with red oxide & paint	250	Sft
11	Providing & fixing aluminum partition with door size 3'x7' & 5'x7' section 4" wide with 5mm /one side vision glass including lock, handle with all respect accessories etc complete of size 10'x8'	200	Sft
12	Providing Fiber tank 500 US Gallons L: 88 inch X W: 47 inch X H: 48 inch MASTER 5 year warranty	2	Each
13	Providing & Installation of 1/2" th lamination top Kitchen Cabinets with door shutter edges pvc finish, center partition, locks, hinges handles size L6' X H2'-0" X D1'-6"	30	Sq.ft
14	Providing & Installation of 1/2" th lamination base Kitchen Cabinets with partial framing 1-1/2"x2" door shutter edges pvc finish, center partition, locks, hinges handles size L6' X H3'X D2'	40	Sq.ft
15	Providing/installing Kitchen Marble Top 2'6"x8' with sink size W2'-3" X L6'	21	Sq.ft
16	M.S.Angle iron ramp for ambulance washing purpose 14 gauge angle iron size 2" total length 7' X 2' High 1'-6" slope 4' X 2' Rest area 3' X 2'	2	L/S
17	Removal of bushes and debris from facility nearby surrounding	1	L/S
<b>BOQ KHAIRPUR (HINGORJA) STATION REFURBISHMENT WORK - PLUMBING</b>			
1	Providing & fixing 24" x 18" bavelled edge mirror of glass complete with glass shelf, 1/8" thick hard board and C.P screws fixed to wooden pleat. (Superior Quality)	3	No.
2	Providing & fixing chrome plated brass towel rail complete with brackets fixing on wooden cleats with 1" long C.P brass screws. (Superior Quality) 24" Long	3	No.

4	Providing and fixing Asian W.C Orisa type white or color glazed with low level flush tank/cistern connecting pipe and all accessories, filling, waste, traps, CP flexible pipe, T-stop cock as per approved sample of Master or equivalent brand with check nuts all joints plugging and screwing as necessary to the structure with pedestal etc. i/c making requisite number of hole in wall plinth and floor and making good in cement concrete 1:2:4. Complete in all respect and to the entire.	3	No.
5	Providing & fixing lavatory basin with mixture in white glazed earthenware complete with & i/c the cost of W. I. Or C. I. Cantilever brackets 6inches built into walls, painted white in 2 casts after a primary coat of red lead paint, a pair of ½” dia chrome plated pillar traps 1-1/2” rubber plug & chrome brass waste of approved pattern 1-1/4” dia malleable iron or c.p. brass traps, malleable iron or brass unions and making requisite number of holes in walls plinth and floor for pipe connection & making good in cement concrete 1: 2: 4. (Foreign or Equivalent).	3	No.
6	Providing & Fixing Muslim Shower with Double Bib Cock (Master)(Sanitary Item)	3	No.
7	Providing & Fixing Single Tap with Crystal Head 1/2 Dia. (Sanitary Item)	3	No.
8	Providing and fixing side pillar cock 1/2" dia approved quality make	3	No.
9	Providing and fixing waste Jali stainless steel 6" x 6"	6	No.
11	Providing & Fixing Schedule 40 UPVC pipe with special fitting		
a	1/2" dia	5	No.
b	3/4" dia	4	No.
c	1" dia	0	No.
d	1-1/4" dia	10	No.
e	3" dia	4	No.
12	Providing & Fixing Y-Tee 3" Dia	3	No.
13	Providing & Fixing Elbow 3" Dia 45°	3	No.
14	Providing & fixing Bend 90° 3" Dia	3	No.



15	Providing & fixing Air Pipe Cap/Caval 3" Dia	3	No.
16	Complete Drainage System		
a	Providing & installation of service manhole chamber size 2' X 2' X 3' complete with drainage cover & plaster	4	Nos
b	Providing & laying 6" dia PVC pipe for sewerage line with all necessary fittings	60	Rft
c	Providing ambulance washing area drainage chamber with iron grill cover size 24" X 24" angle iron size 1 1/2" X 1 1/2" 16 gauge with red oxide & paint.	1	No
d	Providing & installation of water supply connection with 1/2" handle valve for ambulance washing	60	Rft
<b>BOQ KHAIRPUR (HINGORJA) STATION REFURBISHMENT WORK - IT INFRASTRUCTURE</b>			
1	Passive Networking: Supply Cat6 (3M, Schneider equivalent) installation at both end (user IO and patch panel) conduit, conduit fitting, boxes, back boxes, termination & all necessary accessories and fitting to complete the work. Vendor will provide and installation of 24 port patch panel (cat6), two eight socket PDU, Rack harnessing including data/ surveillance points testing and tagging. Dual face plate will be used in surveillance points and attendance device. Single face plate will be used in Desktop connections, printer point and supervisor desk.	26	Nos.
2	Supply & Installation of Patch Panel - 24 Port	1	Nos.
3	Supply & Installation PDU - 8 socket	2	Nos.
4	Supply & Installation Outdoor Weather shield protective cover for Camera	3	Nos.
<b>BOQ KHAIRPUR (HINGORJA) STATION REFURBISHMENT WORK - ELECTRICAL</b>			
1	Light Control Switches : Six/Four Gang 10/13A switch face plate for lighting control with back box, pvc conducting fitting complete in all aspects	36	Nos.
2	Supply & Installation of MDB	1	No.

3	Supply & Installation of MCCB/TP 150 Amp (04 pole)(Breaker Schneider / Hager)	2	Nos.
4	Supply & Installation of 20Amp Breaker (Single Pole)(Breaker Schneider / Hager)	10	Nos.
5	Supply & Installation of 16 Amp Breaker (Single Pole)(Breaker Schneider / Hager)	10	Nos.
6	Supply & Installation of 10 Amp Breaker (Single Pole)(Breaker Schneider / Hager)	10	No.
7	Reorganize & modify existing distribution board as per total electrical load, including Neutral, Earth Bar & Indication Lamps	1	Job
8	Supply & Installation 13A 2pin switch socket outlet Clipsal/ Schneider/Orange or approved Equivalent wiring conduiting where needed complete with all respect	15	Nos.
9	Supply & Installation 13A multi / universal switch socket outlet Clipsal/ Schneider/Orange or Equivalent and its necessary wiring conduiting where needed complete with all respect	15	Nos.
10	Wiring for light and fans point 3/0.29 in channel patti (Pakistan Cables / Fast Cables/Newage or approved Equivalent)	30	Nos.
11	Wiring for mains with 2-7/.029 PVC wire on PVC casting and capping. (Pakistan Cables / Fast Cables/Newage or approved Equivalent)	6	Nos.
12	Wiring for main 2-7/0.44 PVC wire in casing capping	3	Nos.
13	Supply & installation of PVC conduit with accessories embed in wall / floor / ceiling or surface installed. Conduit size:1" Dia, new wiring is inclusive of conduiting work	200	RFT
14	Supply, laying & termination of 04 Core 16mm <sup>2</sup> cable for main to MDB (Pakistan Cables / Fast Cables/Newage or approved Equivalent) complete with all respect	50	RFT
15	Supply & installation of LED Light and its fixture ring holder lights. (Philips/Osaka/Tuff or approved equivalent)	20	Nos.
16	Supply & Installation of ceiling fans 56" (Pak Fan/Royal fan or approved Equivalent)	12	Nos.
17	Supply & Installation of ceiling bracket fan 22" (Pak Fan/Royal fan or approved Equivalent)	6	Each
18	Supply & Installation of Exhaust fan 12"x12" (Pak Fan/Royal fan or approved Equivalent)	6	Nos

**GENERAL TERMS & CONDITIONS:**

1. Inspection requests [IRs] must be submitted 24 hours prior to initiation of work[s]. Works carried out without approval shall be deemed rejected / disapproved.
2. All the arrangements of Materials, Tools, Plants, Labour, etc. including necessary resource to carry out the said job is the responsibility of the Contractor/Successful Bidder.
3. The SIEHS nominated person has the authority to withhold the payment of defective works and may only be released after the rectification of the defects duly certified by the SIEHS nominated person.
4. The Contractor/Successful Bidder shall at all times take all reasonable precautions to prevent any unlawful riotous or disorderly conducts by or amongst Labour and employees and for the preservation of the person and properties at the site and in the neighborhood of the works.
5. Contractor/Successful Bidder shall ensure the safety of workers at site and implement the applicable safety rules and regulations. The Contractor/Successful Bidder shall provide all the necessary PPEs to the workers as well as supervisory staff without any extra charges.
6. Site housekeeping, Safety, Security and Storage of OFM/CFM Material: Unloading & shifting of Owner Furnished Material (OFM)/CFM to the respective floors shall be contractor's responsibility. Safety, Stores/Storage and Security of the material during storage and execution period shall be contractor's responsibility without any extra charges. Contractor/Successful Bidder shall make necessary arrangements e.g. cordon off in order to protect the OFM/CFM material without any extra charges till handing over. Any damage or deviation occurred in contractor's custody will oblige Contractor/Successful Bidder to reproduce the same without disturbing the project timelines. Contractor/Successful Bidder shall be responsible for site housekeeping
7. Cost of all those Works, services obligations and performances etc. which are required to be executed and/or are inferred to be executed by the Contractor/Successful Bidder as per the Contract Documents but not indicated or priced in the Bill of Quantities shall be deemed covered in the overall Contractor/Successful Bidder Price.
8. Electricity, Water Supply, Office Space, Internet & etc. All such arrangements for site works and office spaces shall be the responsibility of the Contractor/Successful Bidder.
9. On the basis of most advantageous bid, SIEHS reserves the right to split the order of the tender with respect to the location.
10. For the purposes of determining the best advantageous bid, facts other than price such as previous performances, previous experience, OEM Authorization, quality assurance, expertise, financial soundness and such other details, SIEHS at its discretion, may consider appropriate will be taken into consideration.
11. Coordination with stake holders: It is contractor's responsibility to coordinate with all stakeholders.
12. TECHNICAL SUBMITTALS, BOQ AND SHOP DRAWINGS:
  - a. Contractor shall submit the shop drawings after necessary coordination with Engineer and Design consultants, within one week after issuance of respective drawings. The shop drawings must be submitted in AutoCAD Version and hard form in triplicate.
  - b. Upon Substantial completion of works, contractor is required to submit As-Built Drawings (Soft & Hard Copies, 2 sets) with the final Bill within 10 working days, failing which, final bill will not be processed.



**SINDH INTEGRATED EMERGENCY AND HEALTH SERVICES  
TENDER DOCUMENTS**

***REFURBISHMENT  
WORKS AT SIEHS  
STATIONS IN SINDH  
Tender # 84-2023***

c. Final bill will be verified in ten (10) working days, time subject to receiving of complete information with the bill i.e. measurement sheets, test reports, as built drawings etc.

## **BIDDING PROCEDURE**

Bids should be submitted in accordance with instructions and bidding procedure shared in this document. Bids are invited as per Single Stage – One Envelope Procedure in accordance with rule sub rule 1 of rule 46 of the Sindh Public Procurement Rules, 2010 (Amended 2022).

## **INSTRUCTIONS TO BIDDERS**

1. Bidder must read all the contents of IFB/NIT as well as Bidding Document and understand all the requirements.
2. Bidder must ensure that the Bid Form is filled in all respect, without any confusion.
3. Bid Security shall be inserted in the proposal.
4. There should not be any over-writing, double writing, crossed, additional conditions.
5. Rates are to be quoted clearly in digits as well as in words Pak Rupees.
6. Each document/paper submitted by the bidder shall be signed/stamped by the bidder on the face of document.
7. Bidder shall examine the Bid Evaluation Criteria and insert appropriate document in the proposal accordingly.
8. Conditional Bids, Telegraphic Bids, Bids not accompanied by Bid Security of required amount and form, without tender fee, bids received after specific date and time and bids of Black Listed firms shall be treated as rejected / non-responsive.

## **ELIGIBILITY CRITERIA FOR BIDDERS**

Bidder which meets the following eligibility criteria / mandatory requirements would be declared responsive for further evaluation as per the evaluation criteria specified in this bidding document. Verifiable documentary proof for all following requirements is a mandatory requirement, noncompliance will lead to disqualification.

1. Bidder which meets the following eligibility criteria / mandatory requirements would be declared responsive for further evaluation as per the Evaluation Criteria specified in this bidding document.
2. Verifiable documentary proof for all following requirements is a mandatory requirement, noncompliance will lead to disqualification.
3. Bidder shall complete all the terms & conditions of this Bidding Document.
4. Bidder able to enclose the documents as per the list of required bidding document.
5. Companies must be available on List of Active Tax Payers" of FBR (For Income Tax) and GST (For Sales Tax) websites.
6. The bidder must have at least 3 years of experience in the relevant field.
7. Details of turn-over (Including in terms of Rupees) of at least last three years.
8. Registration with NTN/ FBR / SRB.
9. Affidavit that firm has never been blacklisted
10. Tender Fee of Rs. 3,000 in shape of Pay order should be in favor of Sindh Integrated Emergency and Health Services.

**LIST OF DOCUMENTS TO BE ENCLOSED: -**

1. Bidder(s) must ensure that the following documents are enclosed with the proposal.
2. Complete bidding documents, duly signed and stamped on its each/every page as acceptance of all terms & conditions of this tender document.
3. Pay Order of Rs. 3,000/- in favor of Sindh Integrated Emergency and Health Services (NTN: 4979065)
4. Copy of NTN / Income Tax Registration Certificate, Sales Tax Registration Certificate /On line verification of Active Tax Payer for Sales Tax. Must be registered in province of Sindh for provincial tax/SRB.
5. Copy of CNIC of signatory of the Bid Form.
6. Audited financial statement of the bidder for last three years (if available).
7. Complete details of turn-over of at least last three years duly supported with the documentary evidence in shape of bank certificate or any authentic document.
8. Affidavit on stamp paper Rs.100 duly notarized to the effect that the bidding company is neither blacklisted nor suspended by any National / International, including Provincial and Federal Government.
9. Affidavit on stamp paper Rs.100 duly notarized to the effect that the bidder has submitted the correct and complete information along with the bid/offer. If any document/information is found forged/engineered /fake/bogus at any stage, the bidder may be declared as Blacklisted in accordance with law and the performance guarantee and payment, if any may be forfeited.
10. Valid documentary evidence in support of evaluation and qualification criteria.
11. Bid Security of required amount and form.
12. Bid form(s) duly filled in all respect and clearly quoted price.
13. Once again note that bidder must ensure that the Bid Form is filled in all respect, without any confusion, there should not be any over-writing, double writing, crossed, additional conditions and Rates are quoted clearly in digits as well as in words.
14. Bidder(s) must understand that all payments / transaction shall be made in Pakistani Rupees (PKR) only.

Bidder(s) must work carefully and gross rates to be quoted, including all applicable taxes and also incorporate the impact of Sales Tax. SIEHS shall made payments after deduction of all applicable taxes including Income Tax & SST / GST and other taxes, if any.

**CLARIFICATION / QUERIES ON TENDERING DOCUMENTS**

A prospective bidder requiring any clarification(s) may notify to SIEHS in writing via email address provided in the bid data sheet duly referring the title of the tender in email subject. The concerned officer will respond to any request for clarification within 03 calendar days, provided they are received at least five calendar days prior to the date of opening of bid. Clarification response will be shared with all prospective bidders that have deposited the tender fee.

## **BID PRICE**

1. The price / bid offer quoted should be firm, final and clearly written / typed without any ambiguity.
2. Price / bid offer must be valid for 6 months from the date of contract agreement. However, Order(s) will be placed as per the requirement after receiving the demand from the concerned department of SIEHS from time to time during the contract period.
3. The bid price should include all the government taxes, as per prevailing taxation rates of provincial / federal / local governments etc. (e.g., SST/GST, Income Tax, Withholding Tax etc.).
4. If there is no mention of taxes or calculation error, the offered/quoted price will be considered as inclusive of all prevailing taxes/duties. The benefit of exemption from or reduction in the Income Tax / SST / GST or other taxes during the contract period shall be passed on to SIEHS.
5. The price / bid offer shall be entered against each item / material / good for the whole duration of contract period.
6. The bidder shall deem to have obtained all related information as to the requirements thereto which may affect the bid offer / price if required.

## **VALIDITY OF BIDS**

Bids shall remain valid for ninety (90) days w.e.f. date of opening of Proposals. The bids without or less than Ninety (90) days validity will be rejected.

## **LANGUAGE OF BIDS:**

The bid prepared by the bidder, as well as all correspondence and documents relating to the bid exchanged by the bidder and the Procuring Agency shall be in English. Supporting documents and printed literature furnished by the bidder may be in another language provided these are accompanied by an accurate translation of the relevant passages in English, in which case for purposes of interpretation of the Bid, the translated version shall prevail.

## **BID SECURITY / EARNEST MONEY**

1. The bid must be accompanied by a bid security in shape of a DD/Pay Order of 2% of the total contract value in favor of "Sindh Integrated Emergency and Health Services" on account of Earnest Money/Bid Bond (refundable) valid for a period of 28 days beyond the bid validity date. For unsuccessful parties the earnest money will be refunded within a period one month after the finalization of successful bidder.
2. The Bid Security shall be attached with the Proposal. No interest will be paid on Bid Security. Photocopy of the Bid Security shall be attached with the Proposal after hiding the amount.



3. Any bid not accompanied by an acceptable bid security shall be rejected by the SIEHS as non-responsive.
4. The bid security / earnest money of the unsuccessful bidders will be returned upon award of contract to the successful bidder or on expiry of validity of bid security whichever is earlier.
5. The bid security of the successful contractor will be returned only when the bidder furnishes the required Performance Security and signed relevant contract agreement. The successful bidder can adjust the Bid Security towards Performance Guarantee, in this situation, the successful bidder shall submit the balance amount on account of Performance Guarantee.

### **ACCEPTANCE / REJECTION OF BID**

A bid determined as non-responsive will be rejected and will not be made responsive by the bidder by correction of the non-conformity.

The bid shall be rejected if:

1. It is substantially non-responsive in a manner prescribed in this tender document.
2. It is against the Pakistani Laws, Rules, Regulations, Policies, Permits, Codes etc.
3. Bidder has conflict of interest with the SIEHS.
4. Bidder engages in corrupt or fraudulent practices in competing for Contract award.
5. Bidder tries to influence the bid evaluation / Contract award.
6. Bid submitted in other than prescribed forms, annexes, schedules, charts, drawings, documents / by other than specified mode; or
7. Unsigned, incomplete, partial, ambiguous, conditional, alternative, late
8. Qualified by vague and indefinite expression such as “subject to prior confirmation”, “subject to immediate acceptance” etc. will be treated as vague offers and rejected accordingly
9. Without verifiable proofs against the mandatory as well as general documentary, qualification and eligibility related requirements; or
10. Bidder fails to meet all the requirements of Tender Eligibility / Qualification Criteria
11. Bids submitted for partial / limited services / items as specified in the Format for Quoting the Rates / Schedule of Requirements / BoQ
12. Bid submitted with shorter bid validity period (i.e. less than 90 days)
13. Bidder fails to meet the minimum evaluation criteria requirements
14. Bid not accompanied by the Bid Security (Earnest Money) of required amount and form
15. Bidder refuses to accept the corrected Total Bid Amount / Price
16. The Bidder has been blacklisted by any public or private sector organization
17. Bidder has mentioned any financial implication(s) in the financial proposal that is in contradiction to this document and Government rules and regulations

### **FORFEITURE OF BID SECURITY**

The bid security / earnest money may be forfeited / confiscated:

1. A bidder requests to withdraw his or its bid after opening but within the bid validity period
2. Successful bidder fails to furnish performance security

3. Successful bidder fails to sign the contract
4. A bidder does not accept the correction of the quoted amount following the correction of arithmetic errors.
5. A bidder has been found black listed by any agency of Federal or Provincial Government.
6. In case of the bidder Company fails to provide the satisfactory services / goods / works.

### **CANCELLATION OF BIDDING PROCESS**

SIEHS Procurement committee:

1. May cancel the bidding process at any time prior to the acceptance of a bid or proposal.
2. Shall incur no liability towards the bidders.
3. Shall intimate the cancellation of bidding process immediately and upload a notice on the company website followed by prompt return of bid security.
4. Shall, upon request by any of the bidders, communicate to such bidder, grounds for the cancellation of bidding process, but is not required to justify such grounds.

### **AMENDMENTS IN BIDDING DOCUMENT**

- a. At any time prior to the deadline for submission of bids, SIEHS may, for any reason, whether at its own initiative or in response to a clarification requested by a prospective bidder, modify the tender document by issuing an note to the provided email address shared by the bidder.
- b. Any amendments thus issued shall form eternal part of the tender document. To offer bidders a reasonable timeframe for preparing revised bids, the SIEHS may at its discretion extend the deadline for submission of bids.

### **DEADLINE FOR SUBMISSION OF BID**

Bids must be received at the identified address no later than the time and date specified in the Bid Data Sheet. Any claim against the bids received late shall not be considered at any stage. Bidders are advised in their own interest to take all precautionary measures for delivery of sealed bids before the deadline for submission of bid.

### **PERIOD OF CONTRACT**

Based on the agreed timelines for execution and completion of the scope of work

## **SINGLE STAGE – ONE ENVELOPE PROCEDURE.**

---

1. Bid shall comprise a single package envelope.
2. SIEHS shall evaluate the proposal in a manner prescribed in advance and reject any proposal which does not conform to the specified requirements. No amendments in the proposal shall be permitted after the submission of documents.
3. Bids shall be opened publicly at a time, date and venue announced and communicated to the bidders in advance.
4. The bid should contain all the relevant information and desired enclosures in the prescribed format.
5. Bid should be submitted in a sealed envelope:
  - i. Be addressed to the SIEHS at the address given in the bidding documents
  - ii. Opened or e-mailed or faxed or telexed bids will not be accepted.
  - iii. Any bid received by the SIEHS after the date and time of tender opening will be rejected and returned as unopened to sender / bidder.
  - iv. Bids qualified by such vague and indefinite expression such as “subject to prior confirmation”, “subject to immediate acceptance” etc. will be treated as vague offers and rejected accordingly.
  - v. Bidder shall comply with all Pakistani Laws, permits, codes and regulation applicable to the bidder’s performance of services. Bid against the Government Rules and Policies, Conditional Bid, Ambiguous Bid or incomplete Bid and Bid without Bid Security will be rejected. No supplementary or revised offer after the opening of bids shall be entertained.
  - vi. In case of announcement of Public Holiday or any unfavorable circumstance, the bids will be opened on next working day. Other terms and conditions, venue and time for drop and opening will remain unchanged.
  - vii. In case of discrepancies between the Notice Inviting Tender (NIT) and the Bidding Documents, the Bidding Documents shall take precedence.
  - viii. No bid may be withdrawn in the interval between the deadline for submission of bids and the expiration of the bid validity period specified in the bid document.

## **POST BID SUBMISSION**

---

### **OPENING OF BID**

1. The date for opening of bids and the last date for the submission of bids shall be as given in the bidding documents and in the tender advertisement. In case, the two dates are different, the date and time, given in the bidding documents shall apply.
2. In case of the date of opening of tender declared as Public Holiday by the Government of Sindh or Federal Government or non-working day due to any reason, the next official working day shall be deemed to be the date for submission and opening of tenders/bids/offers, accordingly. The time and venue shall remain same.

3. All bids shall be opened publicly in the presence of all the bidders, or their representatives, who may choose to be present in person, at the time and place announced in the invitation to bid.
4. The Procurement committee shall read aloud the name of the bidder and total amount of each bid, and of any alternative bids if they have been permitted, shall be read aloud and recorded when opened.
5. All bidders in attendance shall sign an attendance sheet.
6. All bids submitted after the time prescribed as well as those not opened and read out at bid opening, due to any procedural flaw, shall not be considered, and shall be returned without being opened.

### **EVALUATION OF BIDS**

1. All bids shall be evaluated in accordance with the evaluation criteria and other terms and conditions set forth in the bidding documents.
2. A bid once opened in accordance with the prescribed procedure shall be subject to only those rules, regulations and policies that are in force at the time of issuance of notice for invitation of bids.
3. The Committee may seek the clarification from the bidder in writing or oral as the case may be, in case of committee deemed fit, however any clarification shall not be changing the sanctity of original bid.
4. The Bids/Offer shall be evaluated conformity the requirements of terms & conditions of the bidding document based on the record / documentary evidence submitted by the bidder.

### **ANNOUNCEMENT OF BID EVALUATION REPORT**

1. Procurement committee shall announce the results of bid evaluation in the form of a report giving reasons for acceptance or rejection of bids.
2. The report shall be uploaded on SIEHS website and intimated to all the bidders through email at least three (3) working days prior to the award of contract.

### **BID EVALUATION CRITERIA - 100 Marks**

THE BIDS SHALL BE EVALUATED ON MOST ADVANTAGEOUS BID BASIS. The bidder which attains the highest weighted score according to the following criteria shall be selected.

1. The Bids shall be evaluated on complete Lot / Group / Package basis reflected in the Bid Form / Price Schedule. Bids for partial / limited item(s) shall not be considered and rejected.
2. The following merit point system for weighing evaluation factors / criteria will be applied for proposals.
3. Bidders achieving minimum 70% score, means 42 marks out of 60 marks will be considered as qualified bidder(s) to proceed for the financial scoring. Bidder receiving less than 70% scoring in primarily evaluation will be disqualified. Documentary evidence should be provided for appropriate evaluation process of bids.

<b>Annexure - A: Primarily Evaluation Criteria (60% Weightage)</b>		
<b>S. No.</b>	<b>Description</b>	<b>Marks</b>
1	<b>Establishment / Registration of Firm</b>	15
	i. 10 x Years & above = 15 points	
	ii. 6 to 9 Years = 10 points	
	iii. more than 2 years less than 05 years = 05 points	
	iv. Less than 2 years = 0 points (Documentary evidence must be attached, e.g., PEC along with NTN Registration, STRN etc..)	
2	<b>Specific Experience (not outsourced)</b>	10
	Completed projects of similar nature at least 3 not less than Rs. 3 million project cost.	
	i. Minimum 2 Points for 1 x project. (02)	
	ii. For each additional project above 1 x project, 2 points for each project subject to a maximum of 10 points. (10) (Certificates/work orders/ contracts/ from departments / clients should be attached for claiming points)	
3	<b>General Experience of working outside Karachi</b>	15
	Existing General Projects other than specific already completed by firm not less than the Rs. 5 Million project cost.	
	(Certificates from departments / clients should be attached for claiming points)	
4	<b>Current / on-going Projects.</b>	20
	Maximum 3 x projects having a combine worth of Rs. 5 million or more will be considered for this category. (Certificates from departments / clients should be attached for claiming points)	
	(Please note that only 3 projects will be considered in this category)	
<b>Note:</b> Firms must obtain 70% points to qualify for opening of financial bids as detailed in the above table.		
<b>Annexure – B: Commercial Evaluation Criteria (40% Weightage)</b>		
<b>S. No.</b>	<b>Description</b>	<b>Marks</b>
1	Least Quoted Price	10
2	Payment Terms: 45 Days Credit (15 Marks)	15
	Payment after completion Job (10 Marks)	
	Combination of Advance & Credit (5 Marks) Advance Payment with submission of bank guarantee/DD etc.	
3	Credit & Debit Transactions as per Bank Statement for last 1 year Evaluation Requirement	15
	i. 10 Million or above = 15 points	
	ii. Up to 5 Million = 10 points	
	iii. 1 Million or below 5 Million = 05 points	

### **CLARIFICATIONS / CORRECTIONS OF BID**

To assist in the examination, evaluation and comparison of the bids the committee at its discretion may ask the bidder for a clarification of its bid. The request for clarification and the response will be in writing via email and no change in the price or substance of the bid will be permitted.

Arithmetical errors will be rectified on the following basis:

1. If there is a discrepancy between unit price and total price that is obtained by the multiplying the unit price and quantity, the unit price shall prevail and total price shall be corrected. If there is a discrepancy between the words and figures the amount in words shall prevail. If there is a mistake in addition / totaling that can be corrected.
2. If the bidder does not accept the corrected amount of bid, his bid will be rejected and his bid security will be forfeited.

### **PENALTY**

In case of delay or incomplete delivery beyond the given timeline or any extended period duly approved by SIEHS, 0.33% of total amount of the Purchase Order/Contract will be charged as penalty per day up to a maximum of 10%. In case if the delivery is still delayed beyond the extended timeline, SIEHS may resort to cancellation of the order with no liabilities towards SIEHS.

### **PERFORMANCE SECURITY**

The Successful bidder shall submit the Performance Security / Guarantee in the amount specified in the Bid Data Sheet in the shape of Pay Order or Demand Draft or a Bank Guarantee in favor of SIEHS issued by a scheduled bank in Pakistan valid for a period of thirty (30) days beyond the date of completion / expiry of the contract. No interest will be paid on Performance security.

### **REFUND OF PERFORMANCE SECURITY**

The Performance Security / Guarantee shall be returned after expiry of contract and settlement of all claims. This amount will be returned to the supplier after satisfactory completion note from SIEHS.

### **FORFEITURE OF PERFORMANCE SECURITY**

1. In the event of failure to provide items/services as per Contract Agreement / Work Order within the stipulated period, the performance security may be forfeited.
2. In that event, acquiring of the said items/services may be taken from the next lowest bidder vide the same work order at contractor's risk and cost without any farther reference, so that the loss incurred would be recoverable from the Performance Security of the said contractor or from any sum due of which may become due to the contractors.

3. If any equipment / instrument or property of SIEHS or its representative / landlord / donor/ is damaged by the representative of approved firm, cost of the same will be deducted from the performance security money / pending bills of the contractor.

### **APPLICABLE LAW**

The Contract shall be governed by the Laws of Pakistan and the Courts of Karachi - Pakistan shall have exclusive jurisdiction.

### **ARBITRATION**

Any difference or dispute or liability of whatsoever nature arising out of the contract or in any way relating to the contract or to its construction or fulfillment should be settled as far as possible, amicably between the SIEHS and the bidder company. Should the parties fail to come to an amicable settlement the same shall be referred to the award of Arbitrators to be nominated one each by the SIEHS and the bidder company within fifteen (15) days of notice from either side or in the case of the said Arbitrators not agreeing, then to the award of an Umpire to be appointed by the Arbitrators in writing prior to proceeding with the arbitration. The decision of the Arbitrators or the Umpire, as the case may be, shall be final and binding on both the parties. The arbitration shall take place at Karachi, under Pakistani Law of Arbitration.

### **RIGHT TO VARY QUANTITIES AND SPLIT ORDER**

SIEHS reserves the right to increase and/or decrease the scope of work i.e. reduce number of locations or addition of new locations originally specified in the Format for Quoting the Rates / Schedule of Requirements however the successful bidder agrees without any change in unit price or other terms and conditions during the contract/agreement period for the additional locations within duration of contract/agreement.

### **TERMINATION & CANCELATION OF CONTRACT**

If the bidder company fails to provide the satisfactory services, the SIEHS shall be entitled at his option to cancel the contract and recover the damages besides forfeiture of Performance Guarantee. The SIEHS shall not be liable to any risks and costs whatsoever in consequence of such cancellation of the contract.

### **REDRESSAL OF GRIEVANCES BY THE PROCURING AGENCY**

Redressal of Grievances & settlement of dispute will be as per Rule 30 & 31 of SPPRA Rule-2010 (Amended 2022).



## **COST OF TENDERING**

---

The bidder shall bear all costs associated with the preparation and submission of its documents, while SIEHS in no case shall be responsible or liable for those costs, regardless of the conduct or outcome of the tendering process.

## **COST OF STAMP DUTY**

0.35% or notified by the Government of Sindh, will be paid by successful bidder as stamp duty.

## **THIRD PARTY SERVICES**

If required, will be the responsibility of the bidder. Sindh Integrated Emergency and Health Services will not be a party to any such agreement between the bidder and any of its vendors, sub-contractor, if so.

## **CANCELLATION OF CONTRACT**

If the successful bidder fails to provide the satisfactory services, the SIEHS shall be entitled with the option to cancel the contract and recover the damages besides forfeiture of Performance Guarantee. SIEHS shall not be liable to any risks and costs whatsoever in consequence of such cancellation of the contract.

## **PATENT DISCLAIMER**

The bidder indemnifies SIEHS from any disputes arising from the issues of copied design, work of art, use of restricted intellectual property / rights etc. SIEHS in no circumstance would be held liable or any disputes. Any financial, reputational or other liability arising due to the provided service or goods will be the responsibility of the bidder. SIEHS reserves the right to compensation in case of any adverse impact due to breach of patents or unlawful use of intellectual property, idea or work of art.

## **AWARD OF CONTRACT**

The Draft contract agreement along with the terms and condition is attached with this bidding documents. However, the final contract agreement shall be finalized with the mutual consent of SIEHS and the successful bidder.

## **NOTIFICATION OF AWARD**

Prior to the expiration of the period of bid validity, the SIEHS will notify the successful bidder in writing by issuing a letter of acceptance, that its bid has been accepted. The notification of award will constitute the formation of the contract. Upon the successful bidder's furnishing of the performance security, SIEHS will promptly notify each unsuccessful Bidder(s) and will discharge its bid security.

### SIGNING OF CONTRACT

SIEHS will send the successful bidder the draft contract agreement, incorporating all term & conditions between the parties. Within fifteen (15) days of receipt of the Contract Form, the successful bidder shall sign the contract and return it to SIEHS. The successful bidder shall furnish the performance security in accordance with the conditions of contract. Failure of the successful bidder to comply with the requirement shall constitute sufficient grounds for the annulment of the award and forfeiture of the bid security.

### TENDER TIMELINES

The estimated timing for the key milestones in the tender process is as follows:

Steps	Time Line	Dates
Tender advertisement published in the newspapers		31 <sup>st</sup> May 2023
Addressing of queries from bidders	Not later than 03:00pm	9 <sup>th</sup> June 2023
Tender document purchase / collection (Available at Sindh Public Procurement Regulatory Authority (SPPRA) ( <a href="http://ppms.pprasindh.gov.pk">http://ppms.pprasindh.gov.pk</a> ) and SIEHS website ( <a href="http://www.siehs.org">www.siehs.org</a> ))		By 14 <sup>th</sup> June 2023
Bid submission by vendors	9:30 am	By 15 <sup>th</sup> June 2023
Bid Opening by the Procurement Committee	10:00 am	15 <sup>th</sup> June, 2023
* Analysis of bid along with clarification of queries if any		16 <sup>th</sup> June 2023 to 20 <sup>th</sup> June 2023
* Internal approvals and project award with Letter of intent		17 <sup>th</sup> June 2023 till 27 <sup>th</sup> June 2023

\*The above timeline is estimated and may change based on technical complexities. For any changes of dates in bid opening, information will be published at the SIEHS website (<http://siehs.org/tender-documents/>)

**\*Interested bidder are requested to show their interest by providing their details @ [procurement@siehs.org](mailto:procurement@siehs.org) and/or [azeem.hassan@siehs.org](mailto:azeem.hassan@siehs.org) so if there is any change in date of bid opening so it can be communicated to respective bidder/s accordingly.**

**BID DATA SHEET**

BID DATA SHEET	
Company name	Sindh Integrated Emergency & Health Services (SIEHS)
Bid submission	Bids to be submitted in the Tender box placed at SIEHS head office, Monday – Friday 9:00 am to 5:00 pm Plot No. 43-15/K, Block 6, P.E.C.H.S, Karachi, Pakistan.
Procurement Focal person	Mr. Azeem Hassan Khan Yousuf Zai Mr. Amir Ali
Email address	<a href="mailto:procurement@siehs.org">procurement@siehs.org</a>
Contact number	021-111-111-823, Ext 2010
Pricing mechanism	The price shall be fixed during the contract period.
Bid security	Amount of bid security should be 2% of the total bid price
Bid validity	Bid validity period shall be 60 days after opening of proposal
Deadline for bid submission	By 9:30 am on 15 <sup>th</sup> June 2023
Date, Time and Place of Bid opening	At 10:00 am on 15th June 2023
Performance Security	5% of the total contract value as per agreed timeline for completion of project. This amount will be returned to the supplier once the satisfactory report received from SIEHS



SINDH INTEGRATED EMERGENCY AND HEALTH SERVICES  
TENDER DOCUMENTS

**REFURBISHMENT  
WORKS AT SIEHS  
STATIONS IN SINDH**  
Tender # 84-2023

**VENDOR INFORMATION FORM**

Name of the Company			
Company NTN		Date of establishment	
Company GST		Provincial sales tax numbers (SST)	
Office address			
Name of the authorized contact person			
Email address for correspondence			
Telephone Number (Extension if any)		Mobile Number	
Signature of authorized person			
Is any of your relatives / friends working in / for SIEHS?	<input type="checkbox"/> YES	If YES, please provide details:	
	<input type="checkbox"/> NO		
<b><u>Declaration:</u></b> I / We hereby declare that all information and documentation provided are true and correct to the best of my / our knowledge. In the event of any information found false or incorrect, the registration with SIEHS and the placed purchase order will be cancelled		Company stamp if available	

**SPRA INTEGRITY PACT (To be signed with the successful bidder to whom contract is awarded)**



**BID FORM / PRICE SCHEDULE**

(To be submitted on Official Company Letterhead duly signed & stamped)

**Financial proposal**  
**ANNEXURE "A", "B", ... SIEHS -STATIONS**

DESCRIPTION	UoM	Qty	Rate	Amount
	Sq.ft		PKR 0	PKR 0
	Nos.		PKR 0	PKR 0

Total price in words \_\_\_\_\_

- The above mentioned rates/prices should be inclusive of all applicable taxes (WHT/SRB/GST)/duties/delivery charges etc.
- Main equipment with standard accessories including comprehensive warranty as per manufacturer recommendations.
- INCOTERM is DDP, Karachi, Pakistan and delivery at the designated delivery locations across Sindh province.
- Above prices should inclusive of all requirements mentioned scope of work.
- Validity of Offer/Proposal: 90 days from date effective of bid opening
- The above rates/prices should inclusive of all applicable taxes/duties/delivery charges etc.
- Payment terms (in calendar days): \_\_\_\_\_
- Delivery time (in calendar days): \_\_\_\_\_
- Signature with date: \_\_\_\_\_

Name: \_\_\_\_\_

CNIC: \_\_\_\_\_

Designation: \_\_\_\_\_

Company: \_\_\_\_\_

Stamp: \_\_\_\_\_

Submission of the bid by the bidder reflects the acceptance of the SIEHS tender terms and conditions.



**SINDH INTEGRATED EMERGENCY AND HEALTH SERVICES  
TENDER DOCUMENTS**

**REFURBISHMENT  
WORKS AT SIEHS  
STATIONS IN SINDH  
Tender # 84-2023**

**VENDOR REGISTRATION FORM**



Vendor Registration Form

Date: \_\_\_\_\_

Name of the Company			
NTN for Company / CNIC for individuals		Date of establishment	
Company GST if available		Provincial sales tax numbers (SST) if available	
Nature of Business			
Complete office address			
Name of the authorized contact person			
Email address for correspondence			
Telephone number (Extension if any)		Mobile Number	
Any sister concern company	<input type="checkbox"/> YES	If YES, please provide details:	
	<input type="checkbox"/> NO		
Signature of authorized person			
Is any of your relatives / friends working in / for SIEHS?	<input type="checkbox"/> YES	If YES, please provide details:	
	<input type="checkbox"/> NO		
<b>Declaration:</b> I / We hereby declare that all information and documentation provided are true and correct to the best of my / our knowledge. In the event of any information found false or incorrect, the registration with SIEHS and the placed purchase order will be cancelled.  I / We hereby declare that no illegal human resource and/or child labor is employed by the company / individual.		Company stamp, if available	

**SPPRA INTEGRITY PACT**

To be signed with the successful bidder to whom contract/agreement will be awarded.

**AGREEMENT DRAFT**

**Note: This is a draft specimen of the agreement which will be customized based on the item / service of procurement as per the agreed terms between successful bidder and the company**

Tender reference XX-XXXX

THIS AGREEMENT / CONTRACT is made at Karachi on \_\_\_\_\_ 2023

**BETWEEN**

\_\_\_\_\_, a company having its registered office at \_\_\_\_\_, hereinafter called "Supplier / Service Provider", (which expression shall wherever the context so admits mean and include its successors-in-interest and permitted assigns) of the ONE PART.

**AND**

**Sindh Integrated Emergency and Health Services**, a section 42 not-for-profit company registered under the laws of the Islamic Republic of Pakistan and having its office at 43,15/K, Block 6 PECHS Raazi Road, Karachi, hereinafter called "the **Company**" (which expression wherever the context so admits shall mean and include its successors-in-interest and assigns) of the OTHER PART.

\_\_\_\_\_ and **Sindh Integrated Emergency and Health Services** are hereinafter collectively referred to as the "Parties" and individually as a "Party")

**WHEREAS Sindh Integrated Emergency and Health Services** is a section 42 not-for-profit company focusing on Health and Ambulance Operations based and operating in Pakistan.

**AND WHEREAS** the Supplier / Service Provider has agreed to provide goods / services and Company has agreed to take the goods / services as per the terms & conditions, scope of work (descriptions / specifications) as given in annexures of this agreement / contract.

**NOW THEREFORE THIS AGREEMENT WITNESSETH;**

Annexure A – General Terms and Conditions





SINDH INTEGRATED EMERGENCY AND HEALTH SERVICES  
TENDER DOCUMENTS

**REFURBISHMENT  
WORKS AT SIEHS  
STATIONS IN SINDH  
Tender # 84-2023**

Annexure B – Scope of Work

Annexure C – Price Schedule / Contract Price

**IN WITNESS WHEREOF** the parties hereto have set their respective hands through their nominated signatories on the day, month and year first above written.

**For and on behalf of Sindh Integrated Emergency and Health Services**

Signed by

(Name)\_\_\_\_\_

(Signature)\_\_\_\_\_

(Designation)\_\_\_\_\_

**WITNESSES:**

(Name)\_\_\_\_\_

(Name)\_\_\_\_\_

(Signature)\_\_\_\_\_

(Signature)\_\_\_\_\_

(CNIC)\_\_\_\_\_

(CNIC)\_\_\_\_\_

**For and on behalf of Successful bidder**

Signed by

(Name)\_\_\_\_\_

(Signature)\_\_\_\_\_

(Designation)\_\_\_\_\_

**WITNESSES:**

(Name)\_\_\_\_\_

(Name)\_\_\_\_\_

(Signature)\_\_\_\_\_

(Signature)\_\_\_\_\_



**SINDH INTEGRATED EMERGENCY AND HEALTH SERVICES  
TENDER DOCUMENTS**

***REFURBISHMENT  
WORKS AT SIEHS  
STATIONS IN SINDH  
Tender # 84-2023***

(CNIC)\_\_\_\_\_

(CNIC)\_\_\_\_\_

## ANNEXURE A

### GENERAL TERMS AND CONDITIONS OF CONTRACT

#### ARTICLE 1

##### DEFINITIONS

The following definitions shall apply to this Agreement except where the context otherwise requires. Words importing the singular include the plural and vice versa where the context requires.

1.1 COMPANY

Company shall mean Sindh Integrated Emergency and Health Services

1.2 COMPANY REPRESENTATIVE

Company Representative shall mean any person nominated to coordinate and deal with the Supplier / Service Provider or with Supplier's / Service Provider's Organization on behalf of the Company. The terms Requestor or End user or Business Unit where used in this Agreement shall have the same meaning as the Company Representative.

1.3 SUPPLIER / SERVICE PROVIDER

Supplier / Service Provider shall mean the person or Company identified in this Agreement or the person or the Company identified in the Purchase Order as the Supplier of Goods / Service. Where the term "Seller" or "Vendor" or "Contactor" appear they shall be taken to mean Supplier / Service Provider.

1.4 SUPPLIER / SERVICE PROVIDER'S ORGANISATION

Supplier / Service Provider's Organization shall mean subsidiaries and/or any other person or Company having an Agreement directly or indirectly with the supplier / service provider for the supply of Goods / Services.

1.5 AGREEMENT OR THE AGREEMENT

Agreement / The Agreement means this agreement.

1.6 GOODS

Goods mean the material and equipment to be supplied by the Supplier or Supplier's Organization as specified in **Annexure B** and/or the Purchase Order.

1.7 SERVICES

Services shall mean the services to be provided by and execution of work to be done by the Service Provider as specified in **Annexure B** and/or the Purchase Order.

1.8 PURCHASE ORDER

Purchase Order means an order to purchase Goods and Services from the Supplier / Service Provider or Supplier's / Service Provider's Organization placed by the Company as and when required.

1.9 **INSPECTION**

Inspection shall mean Inspection by the Company's Representative of the Goods supplied / Service provided

1.10 **DELIVERY**

Delivery shall mean the point or location(s) where the Company takes possession of the Goods and Services or a part of the Goods and Services.

1.11 **CONFIDENTIAL INFORMATION**

Confidential Information means all oral, electronic, and written information and material, in tangible and intangible format (including, without limitation, financial information, irrespective of the form of communication), which whether designated as "Confidential" or not is considered as confidential.

1.12 **LAW**

Law means any applicable federal, state, or local Law, regulation, rules, or ordinance enforced in Pakistan.

**ARTICLE 2**

**SCOPE OF WORK**

2.1 The Supplier / Service Provider shall supply the goods / services according to the specification and description as given in **Annexure B**.

**ARTICLE 3**

**BUSINESS INTEGRITY**

3.1 The Supplier / Service Provider shall act in accordance with the provisions of this Agreement, rules and policies of the Company as communicated and:

- a. shall ensure that the goods / services supplied are as per specifications and free from all defects.
- b. should comply with any conditions or warranties provided for by law.

**ARTICLE 4**

**CONTRACT PRICE**

- 4.1 In full consideration of the Supply of Goods / Service provided and of the fulfillment of other obligations under the Agreement, the Company shall, subject to the provisions of the Agreement, pay or cause to be paid to Supplier / Service Provider the contract price of the goods / services in accordance with the provisions of the **Annexure C**.
- 4.3 The Parties shall defend, indemnify and hold harmless each other from any liability resulting failure to comply with the reporting or other procedural requirements with respect to their payment.

## **ARTICLE 5**

### **TERMS OF PAYMENT**

- 5.1 In consideration of goods / services supplied / provided as per specifications and verified by the relevant department, the Company will make payment to the Supplier / Service Provider mentioned in **Annexure C**.
- 5.2 Contract price as specified in **Annexure C** of the Agreement shall remain unchanged during the term of this Agreement unless mutually agreed for any price revision formula / mechanism.
- 5.3 Except in case of discrepancies in the invoice submitted to the Company, payment to the Supplier / Service Provider shall be made after \_\_\_\_\_days of submission of invoice along with the delivery notes of goods / services completion certificate and written verification by the authorized representative of the Company. Invoices must be sent to Company User / Finance Department.

## **ARTICLE 6**

### **EXAMINATION & PERFORMANCE GUARANTEE**

- 6.1 Company or its designates shall have the right, at any time, to examine the goods supplied / services provided by the Supplier / Service Provider and their performance and to reject any items found to be not in accordance with the provisions of the Agreement or the specifications provided for supply of goods/ services for which the Company shall have sole discretion. No such examination or rejection shall relieve Supplier / Service Provider of any of its obligations and/or liabilities under the Agreement.
- 6.2 Any additional work to be performed or action to be taken by Supplier / Service provider resulting from examination or rejection as referred to in Article 6.1 shall not be regarded as a variation in Supplier / Service Provider's Work and shall be carried out at Supplier / Service Provider's own expense.

- 6.3 The rejected Goods will be replaced by the Supplier / Service Provider at its own cost. In case of failure on the part of the Supplier / Service Provider to replace the rejected equipment or material / service, the Company shall be entitled to deduct the entire cost of the rejected equipment or material from the Supplier's invoices which may be due for payment.
- 6.4 The service provider shall submit the Performance Security / Guarantee in the amount finalized through the tender T67-2023 in the shape of Pay Order or Demand Draft or a Bank Guarantee in favour of the Company issued by a scheduled bank in Pakistan. No interest will be paid on Performance security. The Performance Security / Guarantee shall be returned after expiry of contract and settlement of all claims. This amount will be returned to the supplier after satisfactory completion note from SIEHS.
- 6.5 In the event of failure to provide items/services as per contract / agreement / work order within the stipulated period, the performance security may be forfeited. In that event, acquiring of the said items/services may be taken from the next lowest bidder vide the same work order at contractor's risk and cost without any farther reference, so that the loss incurred would be recoverable from the Performance Security of the said Supplier / Service Provider or from any sum due of which may become due to the Supplier / Service Provider. If any equipment / instrument or property of the Company or its representative / landlord / donor/ is damaged by the representative of approved firm, cost of the same will be deducted from the performance security money / pending bills of the Supplier / Service Provider

## **ARTICLE 7**

## **INDEMNIFICATION**

- 7.1 Supplier / Service Provider hereby agrees and undertakes to indemnify and hold harmless to the Company, its members, subsidiaries, affiliates and joint venture partners, and their respective directors, officers, employees, and agents (“indemnified parties”) from and against all proceedings, costs, charges, obligations, liabilities, actions, claims, demands, causes of action, suits, damages, judgments, liens, penalties, and expenses including, without limitation, costs and legal fees which may be rendered against the Company
- 7.2 Without prejudice to the provision of Article 7.1, Supplier / Service Provider shall hold harmless and indemnify Company from and against all liens, attachments or claims by Supplier / Service Provider’s Representatives or persons alleging to be Supplier / Service Provider’s Representatives in connection with or arising out of Supplier / Service Provider’s Work. Company shall have the right to withhold the amount involved in the cost arising out of such lien, attachment or claim from any payment due to Supplier / Service Provider until removal of such lien, or attachment or settlement of such claim by Supplier / Service Provider.

## **ARTICLE 8**

### **WARRANTY**

- 8.1 The Supplier / Service Provider warrants and guarantees that the Goods / Services shall be of good standard and quality and shall comply in all respects with the agreed terms and scope of work, and are carried out by professionals qualified to perform in a timely and efficient manner and with all reasonable, care and skills.
- 8.2 In case of failure of the Supplier / Service Provider to rectify any defects in the Goods / Services as notified by the Company, the Company shall have the rights to deduct an amount equivalent to the value of goods / services from the Supplier / Service Provider’s invoices which may be due for payment and/or terminate this Agreement without prejudice to other rights and remedies available to the Company.

## **ARTICLE 9**

### **TERM & TERMINATION**

- 9.1 This Agreement shall remain in full force and effect for a period of year effective from\_\_\_\_\_
- 9.2 Either party will have the option to terminate this Agreement by giving the other party **one (1) month** written notice in advance. If the Supplier / Service Provider exercises right under



this provision in that case the Supplier / Service Provider shall comply with instructions of the Company in respect of the last date for rendering of the Services and till that date the Supplier / Service Provider shall be responsible to provide the Services.

- 9.3 Breach of any condition of any term of the Contract and directions issued by the Company as and when communicated to the Supplier / Service Provider, including the terms of **Annexure A** –If the Supplier / Service Provider shall not rectify the breach within the stipulated period or comply with the Obligations of the Supplier / Service Provider, the non-compliance of obligation of the Supplier / Service Provider shall give the Company right to terminate the agreement immediately without notice and without prejudice to any other rights which may be available to the Company.
- 9.4 In the event of the following, the Company shall have the right to immediately terminate this Agreement without assigning any further reason and without any notice in writing or otherwise.

- a. Supplier / Service Provider fails to comply with any provision of this Agreement, and or fails to comply with local / national laws and directions as and when communicated.
- b. Any default by Supplier / Service Provider, or in case the Company wishes to close the business at the Site or wants to use it for some other purposes.

9.5 If the Company shall elect to terminate this Agreement, all rights and obligations of Supplier / Service Provider shall terminate, except for Supplier / Service Provider's indemnification contained herein.

## **ARTICLE 10**

### **FORCE MAJEURE**

- 10.1 Neither Party to this Agreement shall be liable for a delay in the execution of the Agreement or for any failure to fulfill any term of the Agreement if such delay or fulfillment has been caused by Force Majeure.
- 10.2 Force Majeure shall for the purpose of the Agreement mean an occurrence, which is beyond the control of the party affected and could not have been overcome or prevented by the exercise of reasonable diligence.
- 10.3 Without prejudice to the generality of Article 10.2 the events falling within Force Majeure include, subject to the conditions of the said Article 10.2, force of nature, lightning, earthquakes, floods, volcanoes, tidal waves, acts of war or public enemy, lockdown due to global pandemic and riots.
- 10.4 On the occurrence of any condition of Force Majeure the Party so affected shall immediately give verbal notice of such an event to the other Party and promptly confirm that notice by letter or email to point of contact.

## **ARTICLE 11**

### **ASSIGNMENT**

- 11.1 Supplier / Service Provider shall not be entitled to assign either in whole or in part any of its rights and obligations to sub-contractor under the Agreement without the prior written consent thereto of the Company.

- 11.2 Any Party to whom the rights and obligations under the Agreement are transferred to sub-contractor shall be bound by all the provisions of this Agreement. In addition to Article 11.1, Supplier / Service Provider shall procure as a condition precedent to any assignment that such assignment shall:
- a. Be executed in accordance with the provisions of this Agreement;
  - b. Be executed contemporaneously with a separate specific Agreement in favor of and for the benefit of the Company to the effect that the assignee accepts and agrees to be bound by the Agreement;
  - c. Be of no force or effect whatsoever unless and until the provisions of this Article 11 have been met, and an executed copy of the Agreement referred to in (b) above has been delivered to Company as a pre-condition to granting the required written consent.

## **ARTICLE 12**

### **COMPLIANCE WITH LAWS**

- 12.1 Supplier / Service Provider its employees and agents shall observe and abide by and shall ensure that its subcontractor shall observe and abide by all applicable laws, rules and regulations in Pakistan in connection with the Agreement including but not limited to those with respect to labor and insurance.
- 12.2 Supplier / Service Provider shall obtain without delay such authorizations, approvals, permits, consents and licenses which are necessary for it to perform the Agreement.
- 12.3 Supplier / Service Provider specifically undertakes that it shall not engage/hire/employ child labor / force labor in line with local labor law, while discharging its contractual duties hereunder.
- 12.4 Without prejudice to any other rights that the Company may have the right to terminate the Agreement or any Contract/Work Statement immediately upon notice in writing if the Supplier / Service Provider violate the provisions of this clause.

## **ARTICLE 13**

### **CONFIDENTIALITY**

- 13.1 In the performance of this Agreement, each Party may be exposed to Confidential Information of the other Party. No Party may disclose, reveal or use any such Confidential Information without, in each instance, obtaining the express prior written consent of the owner thereof. These obligations shall survive the expiration or termination of this Agreement.
- 13.2 Each Party acknowledges and agrees that the Confidential Information received by it from the other Party shall be kept confidential and shall not be disclosed or revealed to any other person other than those employees of such Party who needs to know the Confidential Information for the purpose of performing their respective obligations under this agreement and such employees shall take responsible steps to keep secrets.
- 13.3 The obligation of the Parties under Confidentiality Clause shall survive the termination/expiry /cancellation of this Agreement and remain valid and in full force even after the termination/expiry/cancellation of this Agreement.

#### **ARTICLE 14**

##### **WAIVER**

- 14.1 A waiver on the part of the Company or the Supplier / Service Provider of any breach of any term, provision or condition of the Agreement shall not constitute a precedent nor bind either party hereto to a waiver of any succeeding breach of the same of any other term, provision or condition of the Agreement.

#### **ARTICLE 15**

##### **APPLICABLE LAW**

- 15.1 The validity, applications, interpretation and implementation of the Agreement and any dispute, controversy and claims shall be governed by the laws of the Islamic Republic of Pakistan.

#### **ARTICLE 16**

##### **JURISDICTION**

- 16.1 The parties shall submit to the exclusive jurisdiction of the Karachi, Sindh Courts.

#### **ARTICLE 17**

##### **LANGUAGE**

17.1 For all aspects of the Agreement, the English language shall be the ruling language.

**ARTICLE 18**

**SAFETY**

18.1 Supplier / Service Provider shall take all necessary precautions in connection with the Agreement / contract in order to ensure the safety and health of the personnel of the Company, Supplier / Service Provider and third parties. The Company will not be responsible for compensating any damages sustained by the Supplier / Service Provider due to the negligence of Supplier / Service Provider. Further the Company shall have the right to claim from the Supplier / Service Provide, the damages incurred due to negligence of safety.

**ARTICLE 19**

**NOTICES**

19.1 All notices and other communications to be sent by either party to the other shall be duly communicated if delivered to the other party at its address referred to below or its receipt has been acknowledged in writing provided that either party may any time designate a different address to which notices and other communications are thenceforth to be sent.

Supplier / Service Provider at:

**Company Name:** \_\_\_\_\_

**Address:** \_\_\_\_\_

Name	Designations	Email Addresses	Contact Numbers

Company at:

**Sindh Integrated Emergency and Health Services**

**Plot # 43-15/K, Block 06, PECHS**

**Karachi.** \_\_\_\_\_

19.2 Any notice, documents or other writing required by the Agreement to be given or sent shall be deemed to have been duly given or sent if it is delivered in person to the addressee or, if sent by courier telex or facsimile or e-mail, when it is received by the addressee.

Name	Designations	Email Address	Contact Numbers

19.3 The address for delivery of notices and documents to the Company or the Supplier / Service Provider, as the case may be, pursuant to this Article shall be as stated in the Agreement or as may otherwise be notified from time to time in writing by one party to the other.

**ARTICLE 20**

**ALTERNATIVE SUPPLIER / SERVICE PROVIDER**

20.1 In the event of a default by the Supplier / Service Provider to fulfill any of the terms and conditions of the purchase order, the decision of the Company being conclusive and final in the matter, the Company shall have the absolute right to cancel the purchase order forthwith and stop receiving goods / services from the Supplier / Service Provider without incurring any liability financial or otherwise and shall be entitled to recover the cost of arranging alternate Supplies / Service Provider from other sources from the Supplier / Service Provider or adjust the same against the Supplier / Service Provider’s outstanding bills.

**ARTICLE 21**

**SURVIVAL**

21.1 Cancellation, expiration or earlier termination of this Agreement shall not relieve the Supplier / Service Provider from obligations being entered under this Agreement and Supplier / Service Provider shall be bound to complete the services or supplies of goods with the predetermined specifications and shall continue to be responsible for the warranties, remedies, promises of indemnity and confidentiality as decided.

**ARTICLE 22**

**ENTIRETY OF THIS AGREEMENT**

22.1 No prior stipulation, agreement of understanding, verbal or otherwise, of the parties or their agents with respect to the subject matter of this Agreement shall be valid or enforceable unless embodied in the provisions of this agreement.

The following annexures will form part of this agreement:

Annexure A – General Terms and Conditions (already mentioned)

Annexure B – Scope of Work & Delivery Schedule

Annexure C – Price Schedule / Contract Price

**ARTICLE 23**

**RIGHT TO VARY QUANTITIES**

23.1 SIEHS reserves the right to increase and/or decrease originally quantity specified in the tender XX-XXXX without any change in unit price or other terms and conditions during period of performance of this Agreement / contract.

X  
X  
X  
X  
X  
X  
X  
X  
X  
X  
X  
X  
X  
X  
X  
X  
X  
X  
X  
X  
X