



## **Tender Documents – T51/2023**

**Refurbishment Works at various Stations & Regional Office**

TENDER NOTICE .....	4
COMPANY INTRODUCTION .....	5
SINDH INTEGRATED EMERGENCY AND HEALTH SERVICES.....	6
OFFICES .....	6
SINDH INTEGRATED EMERGENCY AND HEALTH SERVICES.....	7
STATIONS WITHIN KARACHI .....	7
SINDH INTEGRATED EMERGENCY AND HEALTH SERVICES.....	8
STATIONS OTHER THAN KARACHI .....	8
INVITATION TO BID.....	9
SCOPE OF WORK .....	10
INSTRUCTION WITH RESPECT TO ANNEXURES .....	10
<b>SINDH INTEGRATED EMERGENCY &amp; HEALTH SERVICES REFURBISHMENT WORK NEW SITES</b> .....	<b>11</b>
<b>SINDH INTEGRATED EMERGENCY &amp; HEALTH SERVICES SIGN BOARD WORK</b> .....	<b>11</b>
<b>ANNEXURE "A" SIEHS NETWORK – KARACHI</b> .....	<b>12</b>
<b>ANNEXURE "B" SIEHS NETWORK – OTHER THAN KARACHI</b> .....	<b>21</b>
<b>ANNEXURE "C" SIEHS – CLIFTON STATION</b> .....	<b>27</b>
<b>VOLUME "I" SIEHS – CLIFTON STATION</b> .....	<b>31</b>
<b>ANNEXURE "D" SIEHS – NORTH KARACHI STATION</b> .....	<b>32</b>
<b>VOLUME "II" SIEHS – NORTH KARACHI STATION</b> .....	<b>36</b>
<b>ANNEXURE "E" SIEHS – MIRPURKHAS STATION</b> .....	<b>40</b>
<b>VOLUME "III" SIEHS – MIRPURKHAS STATION</b> .....	<b>44</b>
<b>ANNEXURE "F" SIEHS – QAZI AHMED STATION</b> .....	<b>45</b>
<b>VOLUME "IV" SIEHS – QAZI AHMED STATION</b> .....	<b>49</b>
<b>ANNEXURE "G" SIEHS – REGIONAL OFFICE SUKKUR</b> .....	<b>50</b>
<b>VOLUME "V" SIEHS – REGIONAL OFFICE SUKKUR</b> .....	<b>57</b>
<b>ANNEXURE "H" SIEHS – MIRPUR MATHELO STATION</b> .....	<b>61</b>
<b>VOLUME "VI" SIEHS – MIRPUR MATHELO STATION</b> .....	<b>66</b>
GENERAL TERMS & CONDITIONS.....	67
SPECIAL CONDITIONS:.....	72
INSTRUCTIONS TO BIDDERS.....	72

CLARIFICATION / QUERIES ON TENDERING DOCUMENTS ..... 74

SINGLE STAGE – TWO ENVELOPE PROCEDURE..... 78

POST BID SUBMISSION ..... 79

COST OF STAMP DUTY ..... 84

VENDOR INFORMATION FORM ..... 87

GENERAL TERMS AND CONDITIONS OF CONTRACT ..... 90



**TENDER NOTICE**

Published in Daily Dawn, Jang & Kawish on 8<sup>th</sup> February, 2023

**Sindh Integrated Emergency & Health Services**

**TENDER NOTICE**

Sindh Integrated Emergency & Health Services (SIEHS), a not for profit organization incorporated under Section 42 of Companies Act, 2017, is providing ambulatory, healthcare and telehealth services to the public in Sindh province.

The following tenders are advertised and relevant information & guidelines are available in each relevant tender documents at company website:  
<http://siehs.org/tender-documents/>

1. Tender # 49-2023 - Supply of Office Furniture for Regional Office & Stations
2. Tender # 50-2023 - Supply of Office Appliances for Regional Office & Stations
3. Tender # 51-2023 - Refurbishment Works at various Stations & Regional Office
4. Tender # 52-2023 - Supply of Bio-Medical Related Items
5. Tender # 53-2023 - Radio Campaign Services for Tele-Tabeeb
6. Tender # 54-2023 - Supply of Meal for Training Activities

Supply Chain Department  
Sindh Integrated Emergency & Health Services  
Plot No. 43-15 / K, Block 6, P.E.C.H.S, Karachi, Pakistan  
UAN: +92-21-111-111-823 Ext: 2006/2022  
[www.siehs.org](http://www.siehs.org)

**سندھ انٹیگریٹڈ ایمرجنسی اینڈ ہیلتھ سروسز**

**تینڈر نوٹیس**

سندھ انٹیگریٹڈ ایمرجنسی اینڈ ہیلتھ سروسز (SIEHS) ایک غیر منافع بخش ادارہ ہے جو کہ 2017ء کی دفعہ 42 کے تحت قانون عدوتہ کے تحت رجسٹرڈ ہے۔ اس ادارے کو صحت اور طبی سہولیات فراہم کرنے اور سہولتوں کو بہتر بنانے کے لیے کام کرنا ہے۔ اس ادارے کی ویب سائٹ پر تینڈر نوٹیس اور تینڈر کی معلومات فراہم کی گئی ہیں۔

تینڈر نوٹیس کے بارے میں مزید معلومات کے لیے براہ کرم <http://siehs.org/tender-documents/> پر ملاحظہ فرمائیں۔

- 1۔ تینڈر نمبر 49-2023 - دفتر اور آفس کے لیے آفس فرنیچر کی فراہمی
- 2۔ تینڈر نمبر 50-2023 - دفتر اور آفس کے لیے آفس ایپلیانسز کی فراہمی
- 3۔ تینڈر نمبر 51-2023 - مختلف اسٹیشنوں اور آفسوں میں (Refurbishment) ترمیم و کاری کا کام
- 4۔ تینڈر نمبر 52-2023 - طبی اور طبی متعلقہ اشیاء کی فراہمی
- 5۔ تینڈر نمبر 53-2023 - ریسپیو سروسز کے لیے ریڈیو پروگراموں کی فراہمی
- 6۔ تینڈر نمبر 54-2023 - تربیتی سرگرمیوں کے لیے کھانے کی فراہمی

**سہلائی چین ڈیپارٹمنٹ**  
سندھ انٹیگریٹڈ ایمرجنسی اینڈ ہیلتھ سروسز  
پلاٹ نمبر 43-15/K، بلاک 6، پی.ای.سی. ایچ. ایس۔، کراچی، پاکستان  
UAN: +92-21-111-111-823 Ext: 2006/2022  
[www.siehs.org](http://www.siehs.org)

**سندھ انٹیگریٹڈ ایمرجنسی اینڈ ہیلتھ سروسز**

**تینڈر نوٹیس**

سندھ انٹیگریٹڈ ایمرجنسی اینڈ ہیلتھ سروسز (SIEHS)، صحت غیر منافع بخش ادارہ ہے جو کہ 2017ء کی دفعہ 42 کے تحت قانون عدوتہ کے تحت رجسٹرڈ ہے۔ اس ادارے کو صحت اور طبی سہولیات فراہم کرنے اور سہولتوں کو بہتر بنانے کے لیے کام کرنا ہے۔ اس ادارے کی ویب سائٹ پر تینڈر نوٹیس اور تینڈر کی معلومات فراہم کی گئی ہیں۔

تینڈر نوٹیس کے بارے میں مزید معلومات کے لیے براہ کرم <http://siehs.org/tender-documents/> پر ملاحظہ فرمائیں۔

- 1- تینڈر نمبر 49-2023 رجسٹرڈ آفس اور اسٹیشنز کے لیے آفس فرنیچر کی فراہمی
- 2- تینڈر نمبر 50-2023 رجسٹرڈ آفس اور اسٹیشنز کے لیے آفس کے لوازمات کی فراہمی
- 3- تینڈر نمبر 51-2023 مختلف اسٹیشنوں اور رجسٹرڈ آفسوں میں (Refurbishment) ترمیم و کاری کے کام
- 4- تینڈر نمبر 52-2023 طبی اور طبی متعلقہ اشیاء کی فراہمی
- 5- تینڈر نمبر 53-2023 ریسپیو سروسز کے لیے ریڈیو پروگراموں کی فراہمی
- 6- تینڈر نمبر 54-2023 تربیتی سرگرمیوں کے لیے کھانے کی فراہمی

**سہلائی چین ڈیپارٹمنٹ**  
سندھ انٹیگریٹڈ ایمرجنسی اینڈ ہیلتھ سروسز  
پلاٹ نمبر 43-15/K، بلاک 6، پی.ای.سی. ایچ. ایس۔، کراچی، پاکستان  
UAN: +92-21-111-111-823 Ext: 2006/2022  
[www.siehs.org](http://www.siehs.org)

## COMPANY INTRODUCTION

---

Sindh Integrated Emergency and Health Services (SIEHS), is a section 42 not-for-profit company formed in collaboration with the Government of Sindh. This service is a realization of Government of Sindh's commitment to strengthen the primary healthcare structure in Sindh through a public-private arrangement ensuring delivery of timely, effective, patient-focused ambulance and holistic healthcare services, free-of-cost.

SIEHS under its ambit operates and manages Pakistan's first and only ISO 9001:2015 certified ambulance service called Sindh Rescue and Medical Service (SRMS). SRMS operates according to international protocols, and is equipped with advanced medical equipment, life-saving drugs and qualified paramedics and nurses, providing immediate pre-hospital emergency care to those suffering with acute health trauma. The quality emergency services are available to all those who need it, across the social spectrum.

Our Tele Tabeeb and Tele Medicine platform is designed to support health care solutions and capacity building across the general health continuum, free-of-charge. With 24/7 access to doctors, clinical psychologists and healthcare experts, supported by updated algorithms for common diseases and on-going pandemic, we ensure that people in need receive timely diagnostic and counselling services, anytime. Our state-of-the-art call center allows callers to access coordinated advice and counselling services from across Pakistan, by dialing "1123".

SIEHS invites sealed bids on **Single Stage Two Envelopes Procedure** for the Refurbishment Works at various Stations & Regional Office from well reputed companies registered with federal / provincial tax authorities.

**SINDH INTEGRATED EMERGENCY AND HEALTH SERVICES OFFICES**



**SINDH INTEGRATED EMERGENCY AND HEALTH SERVICES  
STATIONS WITHIN KARACHI**



**SINDH INTEGRATED EMERGENCY AND HEALTH SERVICES  
STATIONS OTHER THAN KARACHI**





## INVITATION TO BID

Sindh Integrated Emergency and Health Services (SIEHS), invites sealed bids on **Single Stage Two Envelopes Procedure** for the Refurbishment Works at various Stations & Regional Office. For this well reputed companies registered with federal / provincial tax authorities available on List of Active Tax Payers" of FBR (for Income Tax) & SRB (For Sales Tax) websites.

Tender fee	Rs. 3,000/- (Rupees three thousand rupees only) Non-Refundable
Bidding procedure	Single Stage – Two Envelopes Procedure
Bid security	2% of the total bid value.
Deadline for submission of bids	24 <sup>th</sup> February, 2023 at 9:30 am
Bid opening date and time	24 <sup>th</sup> February, 2023 at 10:00 am

- Bidding documents are available on the websites of Sindh Integrated Emergency and Health Services (SIEHS), (<http://siehs.org/tender-documents/>) and bidders are required to enclose Pay Order / Demand Draft for the tender fee (Rs. 3,000/-) with their bid, which must be issued by a scheduled bank within the tender purchasing dates.
- SIEHS may issue the clarifications or amendments in respect of the bidding documents which will be uploaded at the website, SIEHS will not be responsible of any confusion or misunderstanding in this regard.
- In case of any unforeseen situation or government holiday resulting in closure of office on the date of opening, bids will be submitted / opened on next working day at the given time and venue.
- SIEHS reserves the right to reject any or all the bids subject to the relevant provisions of SPP Rules 2010 (Amended 2022). In case of any discrepancy, the SPPRA rules will take precedence.
- SIEHS reserves the right to reduce the scope of work or increase or cancel the some part of the scope or the entire tender document.
- Coordinates of locations are as follows;

<ul style="list-style-type: none"> <li>✓ N. Nazimabad 24.994088, 67.064711</li> <li>✓ Gulistan-e-Johar 24.927081, 67.117044</li> <li>✓ PECHS 24.862472, 67.07570</li> <li>✓ Korangi 24.820777, 67.121785</li> <li>✓ Bin Qasim 24.859587, 67.266672</li> <li>✓ Hyderabad 25.412093, 68.394533</li> <li>✓ Larkana 27.554185, 68.207947</li> <li>✓ Shahdatkot 27.581041, 67.997396</li> <li>✓ Sukkur 27.714417,68.835861</li> </ul>	<ul style="list-style-type: none"> <li>✓ Thatta 24.747815, 67.893478</li> <li>✓ Mirpur Bathoro 24.724489, 68.260130</li> <li>✓ Mirpur Khas 25.521694,68.9625</li> <li>✓ Sajwal 24.607703, 68.081353</li> <li>✓ Mirpur Sakro 24.555329, 67.627651</li> <li>✓ Badin</li> <li>✓ Mirpur Mathelo</li> <li>✓ Qazi Ahmed</li> </ul>
----------------------------------------------------------------------------------------------------------------------------------------------------------------------------------------------------------------------------------------------------------------------------------------------------------------------------------------------------------------------------------------------------------------------------------	------------------------------------------------------------------------------------------------------------------------------------------------------------------------------------------------------------------------------------------------------------------------------------------------------------------------------

## SCOPE OF WORK

---

Infrastructure is a key pillar supporting the fundamental aim of promoting improved standards of care and wellbeing for all, together with a good experience of health care system. The purpose for invitation of bid is to develop the infrastructure of the facilities across the province of Sindh. For this we have identified some areas where some work need to be done to streamline our operational activities. Detailed scope of work is incorporated in annexures;

## INSTRUCTION WITH RESPECT TO ANNEXURES

---

### Annexure "A"

Following items rates will be lock till June 30, 2023. Work will be executed as per site requirement whereas payment will be on actual work executed at site duly approved by SIEHS nominated person

- |                        |                       |
|------------------------|-----------------------|
| a. Internal Paint Work | e. Brick Masonry Work |
| b. External Paint Work | f. Plaster Work       |
| c. Ceiling Paint Work  | g. Paver Work         |
| d. Dismantling Work    |                       |

### ANNEXURE "B"

Following items rates will be lock till June 30, 2023. Work will be executed as per site requirement whereas payment will be on actual work executed at site duly approved by SIEHS nominated person

- |                        |                       |
|------------------------|-----------------------|
| a. Internal Paint Work | e. Brick Masonry Work |
| b. External Paint Work | f. Plaster Work       |
| c. Ceiling Paint Work  | g. Paver Work         |
| d. Dismantling Work    |                       |

**SINDH INTEGRATED EMERGENCY & HEALTH SERVICES REFURBISHMENT WORK NEW SITES**

DESCRIPTION	LOCATIONS					
	CLIFTON	NORTH KARACHI	MIRPUR KHAS	QAZI AHMED	SUKKUR	MIRPUR MATHELO
Detailed scope of work of sites incorporated in annexures Will be referred as Annexure "A", "B"...	C	D	E	F	G	H
Lighting fixtures, network points, CCTV points are incorporated in Drawing w.r.t locations Will be referred as Volume "I", "II", ....	I	II	III	IV	V	VI

**SINDH INTEGRATED EMERGENCY & HEALTH SERVICES SIGN BOARD WORK**

Across the province of Sindh, we need sign boards on our regional office as well as stations. In said activity some of our locations sign board skins need to replace whereas on some locations we will place new sign boards. These jobs need to be done in different phases and completed before June 30, 2023. SIEHS will make contract with successful bidder for the period.

**ANNEXURE "I"**

Said scope of work contains the sign board skins replacement work required at SIEHS Network stations within Karachi.

**ANNEXURE "J"**

Said scope of work contains the sign board skins replacement work required at SIEHS Network stations other than Karachi.

**ANNEXURE "K"**

Said scope of work contains the supply & installation of Sign Boards on various locations of SIEHS within Karachi.

**ANNEXURE "L"**

Said scope of work contains the supply & installation of Sign Boards on various locations of SIEHS other than Karachi.



**ANNEXURE "A" SIEHS NETWORK – KARACHI**

DESCRIPTION	UOM	HEAD OFFICE - PECHS	SATELLITE OFFICE - PECHS	NORTH NAZIMABAD	BIN QASIM	PECHS	JOHAR	KORANGI	TOTAL
<b>INTERNAL PAINT WORK:</b>									
In case of Grey structure - Applying 3 Coats of water base Plastic Emulsion Paint i/c primary coat of chalk and preparing base surface and filling where as required specifications etc <b>(Brand: ICI / Burger/ Nelson / Reliance / Gobis or equivalent)</b>	Sq.ft	200	xxx	8,000	5,000	800	xxx	4,600	18,600
<b>EXTERNAL PAINT:</b>									
Provide and apply with roller Matt Enamel Paint weather shield (approved brand) minimum 03 coats of approved shade over a coat of primer to scrapped surfaces of walls, base preparation, primer, smooth filling etc. all to be done	Sq.ft	xxx	xxx	4,000	3,000	xxx	xxx	5,000	12,000



in strict accordance with the manufacturers specification <b>(Brand: ICI / Burger/ Nelson / Reliance / Gobis or equivalent)</b>										
<b>CEILING PAINT:</b>										
Applying 2 Coats of water base Distemper Paint i/c primary coat of chalk and preparing base surface and filling where as required specifications etc <b>(Brand: ICI / Burger/ Nelson / Reliance / Gobis or equivalent)</b>	Sq.ft	1,000	1,000	1,000	1,000	1,000	1,000	1,000	1,000	7,000
<b>DISMANTLING WORK</b>										
Dismantling of Existing Block Masonry and disposal of rubbish materials by mean of any vehicle	Sq.ft	xxx	xxx	xxx	xxx	200	xxx	xxx	xxx	200
<b>BRICK MASONRY WORK</b>										
PARTITION WALL Brick Masonry 1:4: Providing supplying & fixing of 1st class brick masonry with SR cement complete work in all respect with proper finishing & curing with sweet water all work to be approved by SIEHS Nominated Person. Block 4"	Sq.ft	xxx	xxx	xxx	xxx	100	xxx	100	xxx	200
<b>PLASTER WORK</b>										



<p>Plaster walls (1:4):- Providing and rendering 16mm thick cement mortar finish in double layer 1:4 (1 cement : 4 fine sand) using screened clean sand on internal surfaces of bricks or concrete surfaces including providing neeru finish to a thickness of about 1.5mm finished smooth with steel trowel including preparation of surface ,curing etc at all levels /heights &amp; locations complete as specified and directed by SIEHS Nominated Person <b>(Brand: Falcon, Lucky cement or equivalent)</b></p>	Sq.ft	xxx	xxx	xxx	xxx	200	xxx	200	400
<b>ROOF WATERPROOFING</b>									
<p>Waterproofing application work on roof with chemical application and applying Non fabric canvas sheet to prevent cracks and weak screed, scope includes proper cleaning/washing of roof, filling of all cracks, joints, leaks comprising of 03 coats 1st: Primer coating 2nd: Cementious paste coat for surfacing &amp; non fabric canvas sheet 3rd: Complete covering coat and apply final 02 coats of waterproofing chemical (White/green) heat repellent.</p>	Sq.ft	xxx	xxx	xxx	800	xxx	xxx	xxx	800
<b>MDF PARTITION REPAIR WORK:</b>									
	Sq.ft	xxx	95	120	135	250	xxx	xxx	600



Providing/fixing Mdf cladding on existing frame with paint application on it, supplying/fixing 12mm lamination of approved design, having dimension									
<b>GYPSUM BOARD PARTITION WORK:</b>									
Providing & fixing at site plain Gypsum Board false ceiling made out of 12.5 mm thick paper reinforced gypsum board sheets to be fixed with main frame channels of size (80 mm x 26 mm x 0.5 mm) at every 450 mm c/c, intermediate channels of size(15 mm x 45 mm x 0.9 mm) at every 1220 mm c/c with perimeter channel 20 mm x 26 mm x 0.5 mm all along the wall shall be provided . The frame work to be suspended with strap bolts as recommended using rail plugs 12.5 mm dia x 35 mm long with 6 mm dia bolt and soffit cleat. Ceiling/Wall surface is to paint with two coats of Paint to get a smooth & even look including the cost of hard ware fittings, all labour & materials. Removal of existing faulty lasani sheet and i/c removal debris rubbish materials from site	Sq.ft	xxx	xxx	xxx	xxx	800	xxx	xxx	800
<b>WOODEN DOOR WORK:</b>									



**SINDH INTEGRATED EMERGENCY AND HEALTH SERVICES  
TENDER DOCUMENTS**

*Refurbishment Works at various Stations & Regional Office*

Supply and installation of Wooden flush door with wooden chaukhat frame (Size: 3' x 6') with glass panel (06mm clear glass) (Size: 8" x 24") fittings complete with all respect.	Nos.	xxx	xxx	xxx	xxx	2	xxx	xxx	<b>2</b>
<b>FLOOR WORK</b>									
Removal of existing damage cc flooring and i/c removal debris rubbish materials from site approx.	Sq.ft	xxx	xxx	192	192	100	xxx	192	<b>676</b>
Repairing C.C Flooring 3"to 4" thick grey cement concrete bed in ratio 1:2:4 Including Cement, Sand, Crush approx 12' x 16' complete with all required finishing work	Sq.ft	xxx	xxx	192	192	100	xxx	192	<b>676</b>
<b>PAVER WORKING</b>									
Providing and laying 75mm thick factory made cement concrete interlocking paver block of M-30 grade made by block making machine with strong vibratory compaction and of approved size and design/shape laid in required colour and pattern over and including 50mm thick compacted bed of course sand,filling the joints with coarse sand etc. all complete as per the direction of Engineer-in-charge.	Sq.ft	xxx	xxx	3,000	2,800	xxx	xxx	5,600	<b>11,400</b>
<b>BARBED WIRE</b>									





**SINDH INTEGRATED EMERGENCY AND HEALTH SERVICES  
TENDER DOCUMENTS**

*Refurbishment Works at various Stations & Regional Office*

<p>Providing and fixing of MS angle Iron 2"x2"x1/4" up to 3 ft long straight as directed &amp; having notches 6 inch c/c with making groves for barbed wires including grouting and fixing the same firmly in the existing CC pillars/walls upto 1 ft dept. with 1:3 CM in perfect level &amp; alignment including cost of scaffolding, finishing and curing etc. Complete with cost of painting with three coat of synthetic enamel paint of approved make &amp; shade (Nelson / Reliance / GOBIS / Glamour or equivalent) over a priming coat of red oxide primer. complete in all respect. Distance between the angle will be 6 ft</p>	Nos.	xxx	xxx	55	44	xxx	xxx	36	135
<p>Providing and fixing G.I 12 guages barbed wire double strand having 4 point per foot in new angle irons properly hools and binding wire etc. including cutting of tree branches, crossing over the boundary wall wherever is required. 4 lines of barbed wire</p>	RFT	xxx	xxx	300	250	xxx	xxx	200	750
<b>PLUMBING WORK:</b>									



**SINDH INTEGRATED EMERGENCY AND HEALTH SERVICES  
TENDER DOCUMENTS**

*Refurbishment Works at various Stations & Regional Office*

Providing & fixing & testing in position UPVC 6" pipe push fit type for soil & waste water pipe as embedded in floor including plug, clamp, hanger(bands,Y-tee, etc)complete installation with jointing, fitting ,testing complete in all respect as directed by SIEHS Nominated Person	Rft	xxx	xxx	80	50	xxx	xxx	50	<b>180</b>
Installation of ambulance disinfection water main hole chamber size of chamber: 2'-0"x2'-0" complete with iron grill size: 2'-0"x2'-0',	Nos.	xxx	xxx	1	1	xxx	xxx	1	<b>3</b>
<b>MARBLE POLISHING</b>									
Marble polishing & filled with colored chemical grout as per site requirement with final rubbing finishing and polishing. covered area.	Sq.ft	108	xxx	3,600	xxx	xxx	xxx	xxx	<b>3,708</b>
<b>MS MANHOLE COVERS:</b>									
	Nos.	xxx	xxx	xxx	xxx	1	xxx	xxx	<b>1</b>



Providing & installation of Iron 12 guage manhole cover size 2' x 2' with L-shape angle frame complete with red oxide & paint.										
--------------------------------------------------------------------------------------------------------------------------------	--	--	--	--	--	--	--	--	--	--

**ALUMINIUM PARTITION**

<p>Supply and installation of Aluminium Partition having 8mm Glass with frosted paper</p> <p>Total frost Paper: 175 Sq.ft</p> <p>Front Partition Wall Size : 10.5 ft x 10 ft = 105 sq. ft</p> <p>Side Partition Wall size : 7.0 ft x 10 ft = 70 sq. ft</p> <p>Back Partition wall size : 10.5 ft x 10 ft = 105 sq. ft</p> <p>Door including machine Lock and door closure</p>	Sq.ft	280	xxx	xxx	xxx	xxx	xxx	xxx	280
-------------------------------------------------------------------------------------------------------------------------------------------------------------------------------------------------------------------------------------------------------------------------------------------------------------------------------------------------------------------------------	-------	-----	-----	-----	-----	-----	-----	-----	-----

**WOODEN PARTITION**



<p>Supply and installation of Wooden Partition on Wooden frame of 2" x 1" and 4" x 1.5" with both side MDF sheet of 10mm</p> <p>Wall partition size: 13.5' X 10'</p> <p>MDF Sheet 10mm,</p> <p>Wood: 2" x 1"</p> <p>Wood 4" x 1.5"</p> <p>Partition Wall size: 13.5' x 10'</p> <p>Paint water base emulsion for new partition works</p>	Sq.ft	135	xxx	xxx	xxx	xxx	xxx	xxx	135
<b>LAMINATION SHEET PANEL WORK</b>									
<p>Supply and installation of 3.2mm Back Sheet with one side White formica coating on existing wooden frame along with the insulation 25mm thermopore sheet</p> <p>Thermopore Panel size: 2'-10" x 6'-8": 06 Pieces</p> <p>3.2mm Lamination sheet size: 2'-10" x 6'-8": 06 Pieces</p>	Job.	xxx	xxx	xxx	xxx	1	xxx	xxx	1



**ANNEXURE "B" SIEHS NETWORK – OTHER THAN KARACHI**

DESCRIPTION	UOM	THATTA	SAJAWAL	MIRPUR BATHORO	SAKRO	TOTAL
<b>PARKING SHADE WORK:</b>						
Providing & Installation of 2mm UPVC Shade with 1 1/2" X 2" rectangular Iron framing mash size 3' X 3' Holding pillar 3" dia 16 guage 10' height pipe with 2 mm UPVC nali sheet complete with red oxide & paint Parking shade size 40' x 20', complete with red oxide & paint finish & all necessary fittings	Sq.ft	800	xxx	xxx	xxx	800
<b>INTERNAL PAINT WORK:</b>						
In case of Grey structure - Applying 3 Coats of water base Plastic Emulsion Paint i/c primary coat of chalk and preparing base surface and filling where as required specifications etc <b>(Brand: ICI / Burger/ Nelson / Reliance / Gobis or equivalent)</b>	Sq.ft	5,000	xxx	xxx	xxx	5,000
<b>EXTERNAL PAINT:</b>						
Provide and apply with roller Matt Enamel Paint weather shield (approved brand) minimum 03 coats of approved shade over a coat of primer to scrapped surfaces of walls, base preparation, primer, smooth filling etc. all to be done in strict accordance with the manufacturers specification <b>(Brand: ICI / Burger/ Nelson / Reliance / Gobis or equivalent)</b>	Sq.ft	2,000	xxx	xxx	xxx	2,000



CEILING PAINT:						
Applying 2 Coats of water base Distemper Paint i/c primary coat of chalk and preparing base surface and filling where as required specifications etc ( <b>Brand:</b> ICI / Burger/ Nelson / Reliance / Gobis or equivalent)	Sq.ft	25	50	25	20	120
BRICK MASONARY						
PARTITION WALL Brick Masonry 1:4 : Providing supplying & fixing of 1st class brick masonry with SR cement complete work in all respect with proper finishing & curing with sweet water all work to be approved by SIEHS Nominated Person. Block 4"	Sq.ft	50	xxx	xxx	xxx	50
PLASTER WORK						
Plaster walls (1:4):- Providing and rendering 16mm thick cement mortar finish in double layer 1:4 (1 cement : 4 fine sand) using screened clean sand on internal surfaces of bricks or concrete surfaces including providing neeru finish to a thickness of about 1.5mm finished smooth with steel trowel including preparation of surface ,curing etc at all levels /heights & locations complete as specified and directed by SIEHS Nominated Person.( <b>Brand: Falcon, Lucky cement or equivalent</b> )	Sq.ft	200	xxx	xxx	xxx	200
STEPS TILE WORK:						
Providing and fixing anti skid Porcelain Tiles Flooring jointed in white cement and laid over bed of 1"to 2" thick grey cement concrete bed in ratio 1:2:4 i/c washing / filling of joints with white cement etc: complete in all respect (Imported Premium Quality - Shabbier / Master) Tiles price range per square meter will be Rs. 800 to 1,000 /Mtr inclusive all taxes Tile Size: 16" x 16"	Sq.ft	20	xxx	xxx	xxx	20



Providing & laying of 16"X8" ceramic tiles with spacer and grouting works with all necessary finishing works	195					195
<b>TILE SKIRTING WORK:</b>						
Supply & installation of Black Porcelain tile skirting 4" high, all necessary material will be provided by service provider. Installation need to be done with Cement / Tile Bond	Rft	70	xxx	xxx	xxx	70
<b>CEMENT BOARD PARTITION WORK:</b>						
Providing & installation of cement board lipping on existing wooden partal frame 2" x 1" Removal of existing faulty lasani sheet and i/c removal debris rubbish materials from site	Sq.ft	100	xxx	xxx	xxx	100
<b>FLOOR WORK</b>						
Removal of existing damage cc flooring and i/c removal debris rubbish materials from site approx.	Sq.ft	200	xxx	xxx	xxx	200
Repairing C.C Flooring 3" to 4" thick grey cement concrete bed in ratio 1:2:4 Including Cement, Sand, Crush approx 12' x 16' complete with all required finishing work	Sq.ft	200	xxx	xxx	xxx	200
<b>PAVER WORKING</b>						
Providing and laying 75mm thick factory made cement concrete interlocking paver block of M-30 grade made by block making machine with strong vibratory compaction and of approved size and design/shape laid in required colour and pattern over and including 50mm thick compacted bed of course sand, filling the joints with coarse sand etc. all complete as per the direction of Engineer-in-charge	Sq.ft	xxx	xxx	xxx	1,000	1,000



<b>ELECTRICAL WORK</b>						
Supply and installation of Main line surge protection device panel with all necessary wiring as per surge protected device rating of 65amps/ Volts 240 from main breaker DB till the internal load Distribution board	No.	1	xxx	xxx	xxx	1
Supply & installation of Circuit Breaker Rating 20Amp ( Brand: ABB, Schneider or any equivalent)	Nos.	3	xxx	xxx	xxx	3
Supply & installation of Circuit Breaker Rating 16Amp ( Brand: ABB, Schneider or any equivalent)	Nos.	3	xxx	xxx	xxx	3
Supply & installation of Circuit Breaker Rating 10Amp ( Brand: ABB, Schneider or any equivalent)	Nos.	3	xxx	xxx	xxx	3
Supply & installation of Circuit Breaker Rating 6Amp ( Brand: ABB, Schneider or any equivalent)	Nos.	3	xxx	xxx	xxx	3
Supply & installation of CTs Rating (100/5 Ratio) ( Brand: Pakistan electric, ABB, Schneider or any equivalent)	Nos.	1	xxx	xxx	xxx	1
Bore type earth pit less than 1 ohms ( Note:( Complete material will be provided by vendor included EARTH ROD, EARTH CHEMICAL,EARTH TERMINALS, EARTH CABLE 16MM complete in all )	Nos.	4	xxx	xxx	xxx	4
Additional SPD rating 3 KA panel for Power at IT room	Nos.	1	xxx	xxx	xxx	1
Providing cable 10mm Single Core	Mtr.	90	xxx	xxx	xxx	1
Supply & installation of Rotary Selector Switch 100 Amp (0-1-2) (Clipsal or equivalent)	Nos.	2	xxx	xxx	xxx	2
Reorganize & modify existing distribution board as per total electrical load, including Neutral, Earth Bar & Indication Lamps	Job.	1	xxx	xxx	xxx	1





Supply and Installation of maintenance free dry rechargeable VRLA Battery 12V,40AMP with standard manufacturer warranty (Sample must be approved by SIEHS nominated person prior to installation)	Nos.	20	xxx	xxx	xxx	20
<b>KITCHEN CABINET WORK</b>						
Supply & Installation of wall mounted wooden cabinet on 10mm MDF laminated sheet (Shade will be finalized by SIEHS nominated person) size L6' X H2'-6" X D18", with door shutter and internal partition as per drawing 1	No.	1	xxx	xxx	xxx	1
Supply & Installation of wall mounted wooden cabinet on 10mm MDF laminated sheet (Shade will be finalized by SIEHS nominated person) size L6' X H3' X D24" with door shutter and internal partition as per drawing 2	No.	1	xxx	xxx	xxx	1
<b>MS MANHOLE COVERS:</b>						
Providing & installation of Iron 12 guage manhole cover size 2' x 2' with L-shape angle frame complete with red oxide & paint.	Nos.	xxx	3	3	xxx	7
Providing & installation of Precast manhole cover size 3' x 3' with L-shape angle frame complete with red oxide & paint.	Nos.	xxx	4		xxx	4
<b>MS MAIN GATE:</b>						
Supply & installation of MS plain main gate with square pipe 12 guage 2"x2" framing, both side 14 guage MS sheet with latches handles, hinges, red oxide & black paint complete with all respects. Door size 11'-10"x7' each door size 5'-11"	No.	xxx	1	xxx	xxx	1
<b>MS CHACKER PLATE WORK</b>						
Supply & Installation of Ramp On Angle frame of 1-1/2"x1-1/2" with checker plate 4mm on top details as per drawing 3	No.	1	xxx	xxx	xxx	1
<b>ALUMINIUM PARTITION</b>						



**SINDH INTEGRATED EMERGENCY AND HEALTH SERVICES  
TENDER DOCUMENTS**

***Refurbishment Works at various Stations & Regional Office***

<p>Supply and installation of Aluminium Partition having 8mm Glass with frosted paper          Total frost Paper: 116 Sq.ft (Room Size: 6' x 8')          Front Partition Wall Size : 6 ft x 7 ft = 42 sq. ft          Side Partition Wall size : 8.0 ft x 7 ft = 56 sq. ft          Door Size: 3ft x 6ft 18 sq. ft          Door including machine Lock and door closure</p>	Sq.ft	xxx	xxx	xxx	116	116
---------------------------------------------------------------------------------------------------------------------------------------------------------------------------------------------------------------------------------------------------------------------------------------------------------------------------------------------------------------------------------------------------	-------	-----	-----	-----	-----	-----

**ANNEXURE "C" SIEHS – CLIFTON STATION**

S. NO.	DESCRIPTION	UOM	QTY
<b>CLIFTON STATION REFURBISHMENT WORK - CIVIL WORKS</b>			
1	Dismantling / removing of existing constructed structures, fixtures, tools & equipment's with all necessary precautionary measures, stacking useable dismantled materials at designated place and disposal of surplus stuff etc. from site, (block masonry, dado/ floor tiles, wooden/ glass door, windows, plaster, wooden partition, aluminum tile, false ceiling, roller shutter, AC / Electrical / Plumbing or any other item which is required to be demolished / removed but not mentioned above) in the basement floor. Make smooth plaster finished wall & smooth tile/marble finished floor (Match with existing floor)/wall after dismantling work.	Sq.ft	3,000
2	Earth filling verandah subbase gravels for paver : Earth filling from approved borrow area 1st class earth to be filled without vegetation & also with proper ramming & compaction layer by layer no exceeding 6" as per instruction of engineer in-charge. AASHTO standard compaction	Cft	900
3	PCC LEAN FLOOR (1:3:6) Providing and laying Flooring plain cement concrete with SR cement for concreting to be used approved by engineer in- charge also screeding on top of the roof surface given thickness 1:3:6. Complete the work in all respects approved by SIEHS Nominated Person.	Cft	250
4	CERAMIC TILE flooring:-Supplying & laying approved colour and brand anti skid matt finished 1st quality ceramic tiles of minimum 6.50 mm thick and of size not less than 600mm x 600 mm for flooring including bedding layer of 20mm average thick in CM 1:5, laid to proper slope , line and level including cement floating of joints, polishing and cleaning , filling the joints with white cement mixed with matching colour pigment complete as directed by the SIEHS Nominated Person.	Sft	200
5	PAVER BLOCK flooring:- Providing and laying 60mm thick factory made 1st class cement concrete interlocking paver block of M -40 grade or 6000psi made by block making machine with strong vibratory compaction and of approved size and design/ shape laid in required colour and pattern over and including 50mm thick compacted bed of coarse sand, filling the joints with coarse sand etc. all complete as per the direction of SIEHS Nominated Person.	Sft	2,600
6	Plaster walls (1:4):- Providing and rendering 16mm thick cement mortar finish in double layer 1:4 (1 cement : 4 fine sand) using screened clean sand on internal surfaces of bricks or concrete surfaces including providing neeru finish to a thickness of about	Sft	450

 <b>SINDH</b> <small>HEALTH SERVICES</small>	<b>SINDH INTEGRATED EMERGENCY AND HEALTH SERVICES</b> <b>TENDER DOCUMENTS</b>	<i>Refurbishment Works at various Stations &amp; Regional Office</i>
----------------------------------------------------------------------------------------------------------------------------------	----------------------------------------------------------------------------------	----------------------------------------------------------------------

	1.5mm finished smooth with steel trowel including preparation of surface ,curing etc at all levels /heights & locations complete as specified and directed by SIEHS Nominated Person.		
	<b>INTERNAL PAINT WORK:</b>		
7	In case of Grey structure - Applying 3 Coats of water base Plastic emulsion Paint i/c primary coat of chalk and preparing base surface and filling where as required specifications etc complete in all respects as per SIEHS authorized person (Brand: ICI / Burger/ Nelson / Reliance / Gobis or equivalent)	Sqft.	580
	<b>EXTERNAL PAINT WORK:</b>		
8	Provide and apply with roller Matt Enamel Paint weather shield (approved brand) minimum 03 coats of approved shade over a coat of primer to scrapped surfaces of walls, base preparation, primer, smooth filling etc. all to be done in strict accordance with the manufacturers specification complete in all respect as directed by Engineer (Brand: ICI / Burger/ Nelson / Reliance / Gobis or equivalent)	Sqft.	2,500
9	Roof water proofing:-Water proofing with Bitumen, membrane & water proofing chemical	Sft	1,600
10	Repair & paint/polish of existing door/window frame chokhat & grills	NOS	10
11	Provide supply fixing of wooden Door (3x7)ft without frame	NOS	3
12	Fixing of Net on washroom and Kitchen Vent	NOS	4
13	Installation of ambulance M.S.Angle iron ramp for ambulance washing purpose 14 guage angle iron size 2" total length 7' X 2' High 1'-6" slope 4' X 2' Rest area 3' X 2'	NOS	2
14	Providing and fixing (elephant brand) gypsum false ceiling 2'x2' with aluminum channel framing imported. etc.	Sqft.	450
<b>CARPENTRY WORK</b>			
15	Providing & Installation of 1/2" th lamination top Kitchen Cabinets with door shutter edges pvc finish, center partition, locks, hinges handles size L6'-2" X H2'-0" X D1'-6"	Sft	20
16	Providing & Installation of 1/2" th lamination base Kitchen Cabinets with partal framing 1-1/2"x2" door shutter edges pvc finish, center partition, locks, hinges handles size L6'-2" X H2'-4" X D2'-4" marble top with chamfered edges size 6'-2"x2'-6"	Sft	50
17	WASHROOM FITTING PLUMBING SANITARY WORK:- Supply provide and fix material includes complete sanitary work plumbing shower set W.C waste (Master/Shabbir/ICL or equivalent) net p trap u trap etc. complete work as per technical specification & directed by SIEHS Engineer in charge	Nos	4
18	Supply & Installation of Fiber tank each of 2000 Liters with necessary supports (Note: Vertical Tank 1000 Liters Approximate 228 US Gallons Material: Food Grade PE (Poly Ethylene) 2-Ply Water Storage Tank (10 Years Leakage Repair Warranty)	Each	1

 <b>SINDH</b> <small>GOVERNMENT DEPARTMENT OF &amp; HEALTH SERVICES</small>	<b>SINDH INTEGRATED EMERGENCY AND HEALTH SERVICES</b> <b>TENDER DOCUMENTS</b>	<i>Refurbishment Works at various Stations &amp; Regional Office</i>
---------------------------------------------------------------------------------------------------------------------------------------------------------------------	----------------------------------------------------------------------------------	----------------------------------------------------------------------

19	Providing and making of ambulance disinfecting area including water supply line with pressure pump, Iron grill mash size 2'x2' drain system with chamber size L2'xW2'xH4'for dewatering	L.S	1
20	Providing & making pantry including marble top, sink with mixer, supply line & drainage connection marble with sink Size 2'x4'	L.S	1
S. NO.	DESCRIPTION	UOM	QTY
<b>CLIFTON STATION REFURBISHMENT WORK - IT INFRASTRUCTURE</b>			
1	<p>Passive Networking: Supply Cat6 (3M, Schneider equivalent) installation at both end (user IO and patch panel) conduit, conduit fitting, boxes, back boxes, termination &amp; all necessary accessories and fitting to complete the work. Vendor will provide and installation of 24 port patch panel (cat6), two eight socket PDU, Rack harnessing including data/ surveillance points testing and tagging.</p> <p>Dual face plate will be used in Wifi , attendance device and supervisor desk  Single face plate will be used in Desktop connections, printer point and Meeting room and zonal/Operational manager  Three iron rod stand/ shade required for outdoor cams.</p>	Nos.	18
a)	Duel Face Plate	Nos.	8
b)	Single Face Plate	Nos.	10
2	Supply and installation of Attendance device power connected with Rack UPS providing of 7/29 wire of 15 meter with PVC casting and capping.	nos	1
<b>CLIFTON -REFURBISHMENT WORK - ELECTRICAL</b>			
1	Light Control Switches : Six/Four Gang 10/13A switch face plate for lighting control with back box, pvc conducting fitting complete in all aspects	Nos.	14
2	Supply & Installation of 20Amp Breaker (Single Pole)(Breaker Schneider / Hager)	Nos.	3
3	Supply & Installation of 16 Amp Breaker (Single Pole)(Breaker Schneider / Hager)	Nos.	4
4	Supply & Installation of 10 Amp Breaker (Single Pole)(Breaker Schneider / Hager)	No.	8
5	Reorganize & modify existing distribution board as per total electrical load, including Neutral, Earth Bar & Indication Lamps	Job	1
6	Supply & Installation 13A multi / universal switch socket outlet clipsal/ Schneider /Orange or Equivalent with complete back box cover plate	Nos.	26
7	Wiring for light and fans, exhaust point 3/0.29 in channel patti (Pakistan Cables / Fast Cables/Newage or Equivalent)	Nos.	31
8	Wiring 2-7/.029 PVC wire on PVC casting and capping. (Pakistan Cables / Fast Cables/Newage or Equivalent)	Nos.	31
9	Wiring for main 2-7/0.44 PVC wire in casing capping	Nos.	6

 <b>SINDH</b> <small>GOVERNMENT DEPARTMENT &amp; HEALTH SERVICES</small>	<b>SINDH INTEGRATED EMERGENCY AND HEALTH SERVICES TENDER DOCUMENTS</b>	<i>Refurbishment Works at various Stations &amp; Regional Office</i>
------------------------------------------------------------------------------------------------------------------------------------------------------------------	----------------------------------------------------------------------------	------------------------------------------------------------------------------

10	Supply & installation of PVC conduit with accessories embed in wall / floor / ceiling or surface installed.	Nos.	26
11	Supply & Installation of ceiling fans 56" (Pak Fan/Royal fan or Equivalent)	Nos.	8
12	Supply & Installation of ceiling bracket fan 22" (Pak Fan/Royal fan or Equivalent)	Each	4
13	Supply & Installation of Exhaust fan 12"x12" (Pak Fan/Royal fan or Equivalent)	Nos	4
14	Lights and board and electric fitting work for 2 wash room, (Switch - 2, Socket 1)	Nos	2
15	<b>EARTH PIT</b> : 35 Sqm.mm bare copper wire buried from Copper ground rod to building wall, with (10 ft x ¾ in) copper-clad steel ground rods spaced every along the ground loop. (Resistance should be less then 5 Ohms)	Nos.	2
	<b>GROUDING BUS BAR</b> : Grounding bus bars, electroplated bus bar on wall insulators.		
	<b>EPC /ETP GROUNDING &amp; BONDING</b> : Main bus bar on wall/D.B, Lugs with boots terminated on server rack bus bar/Ground point etc		
16	LED Ceiling & surface Lights 18 Watt	Nos	20
17	LED Flood Light - 50 watt- Osaka / Tuff	Nos	4

**VOLUME "I" SIEHS – CLIFTON STATION**



**LIGHTING POINT LAYOUT PLAN**

DESCRIPTION:	
3 D.F.N.P (DUAL FACE NETWORK POINT)	
3S.F.N.P (SINGLE FACE NETWORK POINT)	
3E.N.P (ELECTRIC MULTIPWER POINT)	
4-CAMERA (INDOOR)	
5-CAMERA (OUTDOOR)	

**ANNEXURE "D" SIEHS – NORTH KARACHI STATION**

S. No.	DESCRIPTION	UOM	QTY
<b>NORTH KARACHI REFURNIBISHMENT WORK - CIVIL WORKS</b>			
<b>DISMANTLING WORK:</b>			
1	Dismantling of Existing Block Masonry and disposal of rubbish materials by mean of any vehicle	Sqft.	150
<b>WOODEN DOORS:</b>			
2	Doors Shutter 1-1/2" thick Teak wood ply shutters (Partially glazed with frost glass where as required) over first class partal wood skeleton (Solid) styles and rails core of partal wood and Teak ply wood (3 ply) on both sides including hold fasts, hinges, iron tower bolts, handles and cleats with cord etc. complete in all respects Size 3'x7'x3'	Nos.	3
<b>BLOCK MASONRY WORK:</b>			
3	Providing and laying Class 'D' 1:3:6 cement concrete Solid Block Masonry wall 4" to 6" in thickness and above set in 1:6 cement SRC sand mortar in ground floor superstructure i/c racking of joints and curing, etc, complete.(Minimum crushing strength 1300-lbs/P.S.I) Brand (Lucky, Falcon or equivalent duly approved by SIEHS authorized person)		
	150 mm Thick	Sqft.	850
<b>PLASTER WORK:</b>			
4	SRC Cement Plaster in Ratio 1:6 (15 mm Thick) i/c floating coat of cement in proper design & profile on walls/beams & columns. This rate also i/c providing expanded metal at the joint of R.C.C. Members and block masonry where as required etc. complete in all respect as per specification and drawings and approval of SIEHS authorized person Brand (Lucky, Falcon or equivalent duly approved by SIEHS nominated person)	Sqft.	1400
<b>R.C.C. PRECAST LINTELS</b>			
5	Provide and lay R.C.C Precast Lintels using 1:2:4 reinforce, cement concrete etc. Complete with curing, leveling and anchoring with dowels embedded while casting including the cost of steel, Complete in all respects and conforming to the requirements of drawings, specifications and to the entire satisfaction of the SIEHS authorized person)		
a)	R.C.C.Precast Lintels	Sqft.	60
<b>FALSE CEILING (Gypsum)</b>			
6	Provide and install 24"X 24" False Ceiling (Gypsum DFB Brand ) with Aluminum suspension system, complete with instruction by the Architect.(Note: Design and Color approve by the Architect/Consultant.)	Sqft.	1075
<b>PAINT WORK:</b>			
7	Applying 2 Coats of water base Plastic Emulsion Paint i/c primary coat of chalk and preparing base surface and filling where as required specifications etc. complete in all respects as per SIEHS authorized person (ICI/Berger/Nelson / Reliance / GOBIS or equivalent)	Sqft.	555
8	Applying 2 Coats of water distemper Paint i/c primary coat of chalk and preparing base surface and filling where as required specifications etc.	Sqft.	120



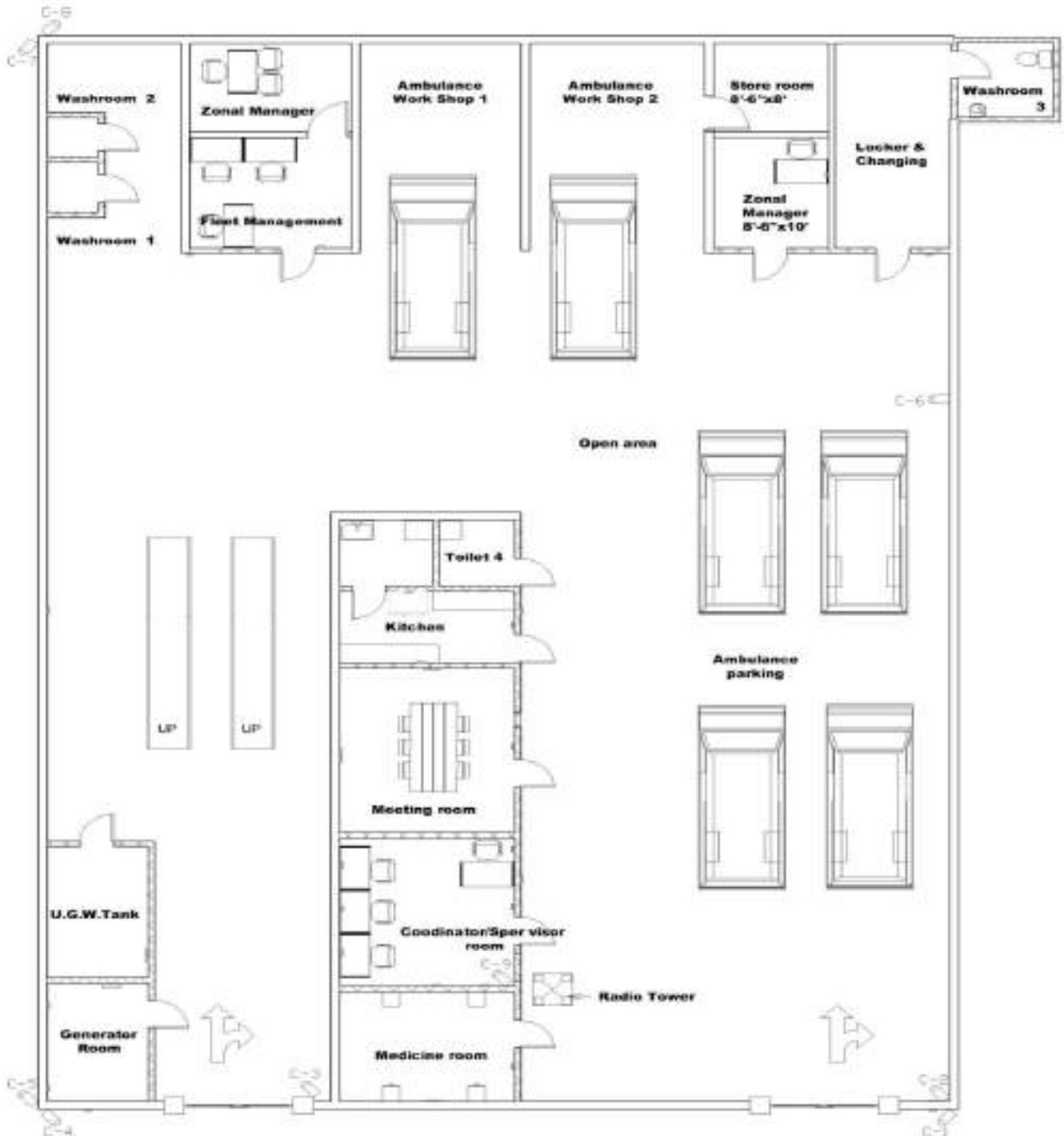
	complete in all respects as per SIEHS authorized person (ICI/Berger/Nelson / Reliance / GOBIS or equivalent)		
	<b>BARBED WIRE:</b>		
9	Providing and fixing of MS angle Iron 2"x2"x1/4" up to 3 ft long straight as directed & having notches 6 inch c/c with making groves for barbed wires including grouting and fixing the same firmly in the existing CC pillars/walls upto 1 ft dept. with 1:3 CM in perfect level & alignment including cost of scaffolding, finishing and curing etc. Complete with cost of painting with three coat of synthetic enamel paint of approved make & shade (Nelson / Reliance / GOBIS / Glamour or equivalent) over a priming coat of red oxide primer. complete in all respect. Distance between the angle will be 6 ft	Nos.	65
10	Providing and fixing G.I 12 guages barbed wire double strand having 4 point per foot in new angle irons properly hools and binding wire etc. including cutting of tree branches, crossing over the boundary wall wherever is required. 4 lines of barbed wire wall measurement is mentioned in drawing	Rft	250
	<b>ALUMINUM SLIDING WINDOW:</b>		
11	Providing & installation of Aluminum window on box section size 2'x2' with sliding door & lock	Nos.	1
	<b>REMOVAL OF BLOCK MASONRY WALL:</b>		
12	Removal & Breaking of block masonry wall size 2'x2' & finishing with smooth plaster	Job	1
	<b>PORCLAIN TILING WORK:</b>		
13	Providing and fixing anti-skid Porcelain Tiles Flooring 24"x24"inch or 60x60cm- Grey color jointed in white cement and laid over bed of 1"to 2" thick grey cement concrete bed in ratio 1:2:4 i/c washing / filling of joints with white cement etc. complete in all respect (Imported Premium Quality - Shabbier / Master) Tiles price range per square meter will be Rs. 800 to 1,000 inclusive all taxes	Sqft	680
<b>S.NO.</b>	<b>DESCRIPTION</b>	<b>UOM</b>	<b>QTY</b>
<b>NORTH KARACHI REFURNIBISHMENT WORK - ELECTRICAL &amp; NETWORKING</b>			
1	Providing of MDB AC With circuit Breaker Complete.1 Number MCCB/TP 150 Amp, 1 Number 60 Amp, 10 Number 20Amp,10 Number 16 Amp,6 Number 10 Amp Including Neutral, Earth Bar & Indication Lamps. (Breaker Schneider / Hager)	No.	1
2	Supply and installation of Serge breaker of 110ampere	No.	1
3	Supply & installation of under voltage & overvoltage protection auxiliary (2 circuits). It operates from 220VAC to 240VAC, at a frequency of 50/60 Hz.	Nos.	1
4	Supply & installation of 63 amperes Manual changeover switch to interface the connectivity between KE and Generator with all necessary commissioning and requirement as per site load inspected by the vendor (Rotatory Selector)	No.	1
5	Providing, installation, testing, commissioning and termination of following size of CU/PVC/PVC & CU/XLPE/PVC Cables for Distribution Board in PVC conduit, including all accessories, Complete in all respect as per required.		

a)	Wiring for mains with 2-7/.036 PVC wire on PVC casting and capping	Nos.	1
b)	Providing, Installation, testing and commissioning of wiring of <b>One light point</b> controlled by one switch and wired with 3x1.5 mm sq. PVC insulated wires 300/500 V grade, in and including cost of 3/4" dia. heavy duty PVC conduit recessed in wall, columns slabs or above light carrier all PVC conduit accessories, 3" high PVC junction boxes, pull boxes, steel pull wires, PVC flexible conduit from ceiling junction box to light fixture with brass chuck nut including cost of 3x1.5mm sq. from Ceiling Junction Box to Light Fixture , M.S. sheet steel switch box 16 SWG with earth terminal and 2 coats of enameled paint, M.S. box shall be of the same size as that of 1, 2 or 3 gang flush type plate switches, including cost of gang type light switches 10 amps	Nos	8
c)	Providing, Installation, testing and commissioning of wiring of <b>Two light points</b> controlled by one switch and wired with 3x1.5 mm sq. PVC insulated wires 300/500 V grade, in and including cost of 3/4" dia. heavy duty PVC conduit recessed in wall, columns slabs or above light carrier all PVC conduit accessories, 3" high PVC junction boxes, pull boxes, steel pull wires, PVC flexible conduit from ceiling junction box to light fixture with brass chuck nut including cost of 3x1.5mm sq. from ceiling Junction Box to Light Fixture, M.S. sheet steel switch box 16 SWG with earth terminal and 2 coats of enameled paint, M.S. box shall be of the same size as that of 1, 2 or 3 gang flush type plate switches, including cost of gang type light switches 10 amps.	Nos	11
b)	Wiring for mains with 2-7/.029 PVC wire on PVC casting and capping for equipment's.	Nos.	12
c)	Wiring for light and fans point 3/0.29 in channel patti Points already provided electrical Drawing	Nos.	47
d)	Providing and Fixing Multi Socket Double 13 AMP (Clipsal) Points already provided electrical Drawing	Nos.	39
6	LED Ceiling & surface Lights 18 Watt	Nos.	36
7	LED Flood Light - 50 watt- Osaka / Tuff	Nos.	7
7(A)	Providing and laying of 3x2.5mm wiring with 20 ampere breaker for the 50 watt flood lights connections from the existing provided DB to the provided location as per provided layout	Nos	7
8	LED Flood Light - 25 watt - Osaka / Tuff	Nos.	4
8(A)	Providing and laying of 3x2.5mm wiring with 10 ampere breaker for the 50 watt flood lights connections from the existing provided DB to the provided location as per provided layout	Nos	4
9	LED Tube light - 45 watt - Osaka/Tuff	Nos.	2
10	<b>EARTH PIT:</b> 35 Sqm.mm bare copper wire buried from Copper ground rod to building wall, with (10 ft x ¾ in) copper-clad steel ground rods spaced every along the ground loop. (Resistance should be less then 5 Ohms)	No.	1
	<b>GROUDING BUS BAR :</b> Grounding bus bars, electroplated bus bar on wall insulators.		

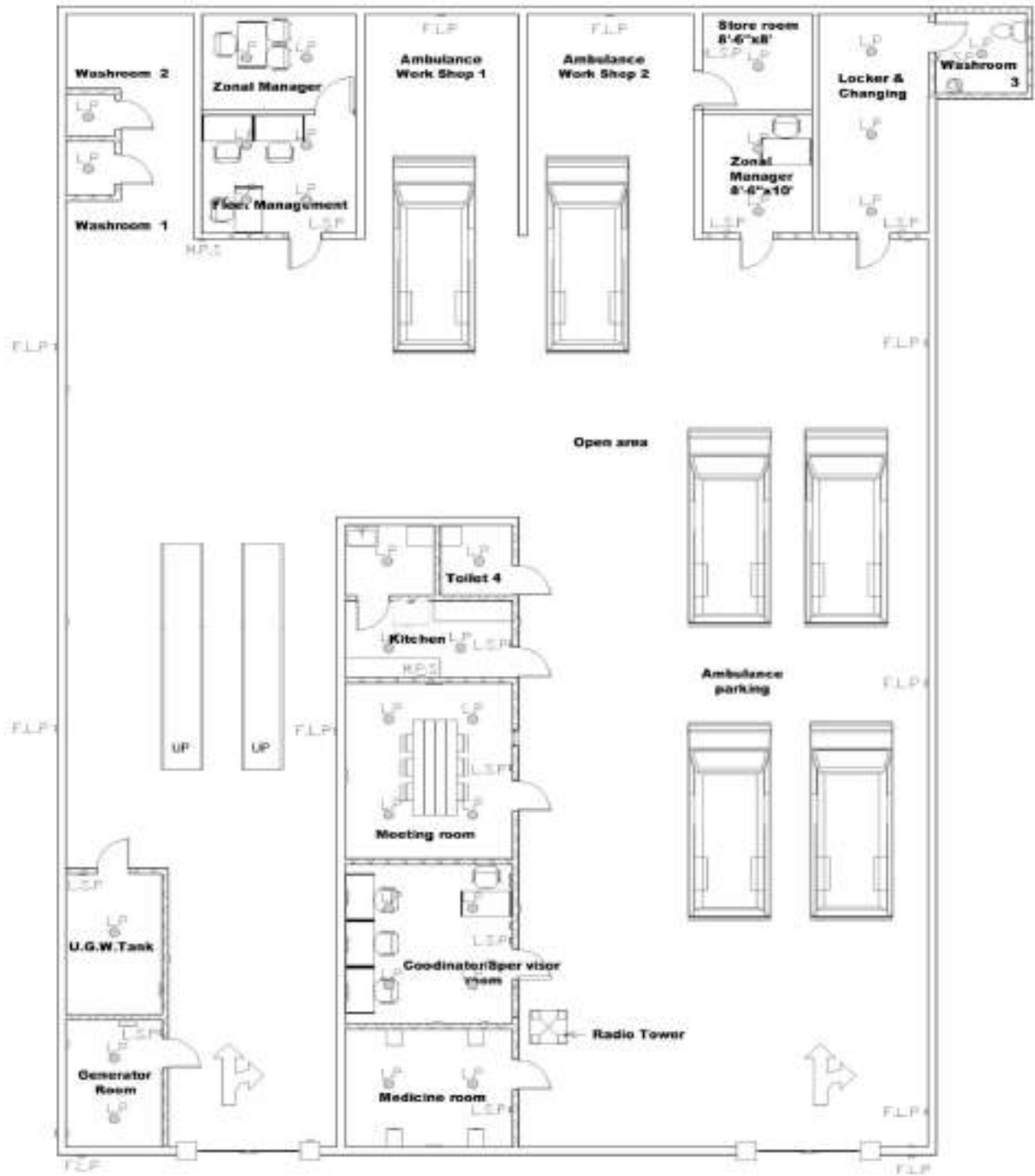
	<b>EPC /ETP GROUNDING &amp; BONDING</b> : Main bus bar on wall/D.B, Lugs with boots terminated on server rack bus bar/Ground point etc		
<b>NORTH KARACHI REFURNIBISHMENT WORK - AIR CONDITIONING</b>			
11	Installation of 1.5 Ton AC with complete (suction & return), Insulation, Copper wiring/cable, Rft 35 or less supports/clamps, accessories, etc. to ready condition. Supply Drain Piping supports/clamps, accessories, Size1/2 ready condition. Bracket for Outdoor unit with rowel bolt. Installation of AC,s indoor/outdoor lifting, placing and fixing up to ready condition Job 1 complete in all respect. Note: AC,s outdoor frame where needed.	No	1
<b>NORTH KARACHI REFURNIBISHMENT WORK - IT WORK</b>			
12	Providing & installation of Network cat-6 cable (3M/Schneider or Equivalent for Data, Surveillance Camaras, Laptop, Desktop, Attendance, WiFi, Printer devices) laying, termination, tagging and testing at user end to IT rack Chanel Patti laying, fixing and I/O punching(as per layout) & Shade required for outer cameras (Nos.7)	Nos.	26
13	Punchless Cat-6 io's	Nos.	26
14	IO Box for Data & Voice	Nos.	12
15	Single face plate for Data (3M/Schneider or Equivalent)	Nos.	8
16	Dual face plate for Data & Voice (3M/Schneider or Equivalent)	Nos.	3
<b>S. No.</b>	<b>DESCRIPTION</b>	<b>UOM</b>	<b>QTY</b>
<b>NORTH KARACHI REFURNIBISHMENT WORK - PLUMBING WORK</b>			
1	Gas Connection For Stove Providing all necessary connection for Stove to connect with SSGC line of supply inside Kitchen	Job.	1
2	Supply & installation of 1 Horse power Donkey pump with PVC water connection with necessary fittings water connection pipe inlet of 1" dia & outlet of 3/4" dia pvc pipe	Rft	80
3	Supply & installation of 1 mono block pump of 1hp with PVC water connection with necessary fittings water connection pipe inlet of 1" dia & outlet of 1" dia pvc pipe Motor Specification: size: 1.25"x1" Volts: 200-230, Ampere: 5, Head - 70-25, Discharge 70-25	Rft	80
4	Providing necessary plumbing 1/2" ich water lines connection as required from the Suction pump connection to the both fiber tanks	Nos.	2
5	Supply & Installation of Fiber tank each of 2000 Liters with necessary supports (Note: Vertical Tank 2000 Liters Approximate 528 US Gallons Material: Food Grade PE (Poly Ethylene) 2-Ply Water Storage Tank (10 Years Leakage Repair Warranty)	No.	1
6	Supply & Installation of Fiber tank of 1000 liters with necessary supports (Note: Vertical Tank 1000 Liters Approximate 264 US Gallons Material : Food Grade PE (Poly Ethylene) 2-Ply Water Storage Tank (10 Years Leakage Repair Warranty)	No.	1

7	Providing & installation of water supply connection with 1/2" handle valve for ambulance washing with necessary fittings	Rft.	70
---	--------------------------------------------------------------------------------------------------------------------------	------	----

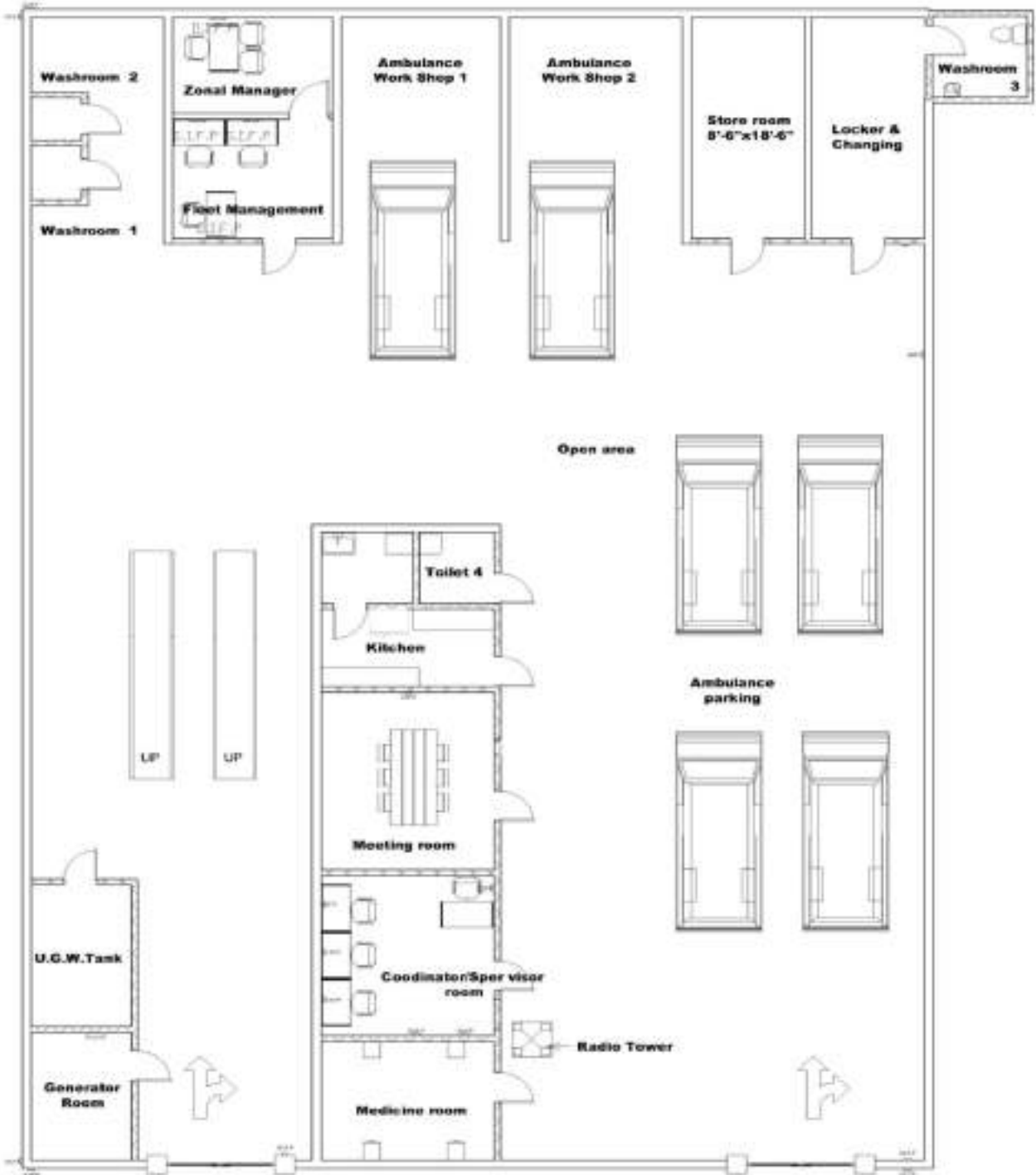
**VOLUME "II" SIEHS – NORTH KARACHI STATION**



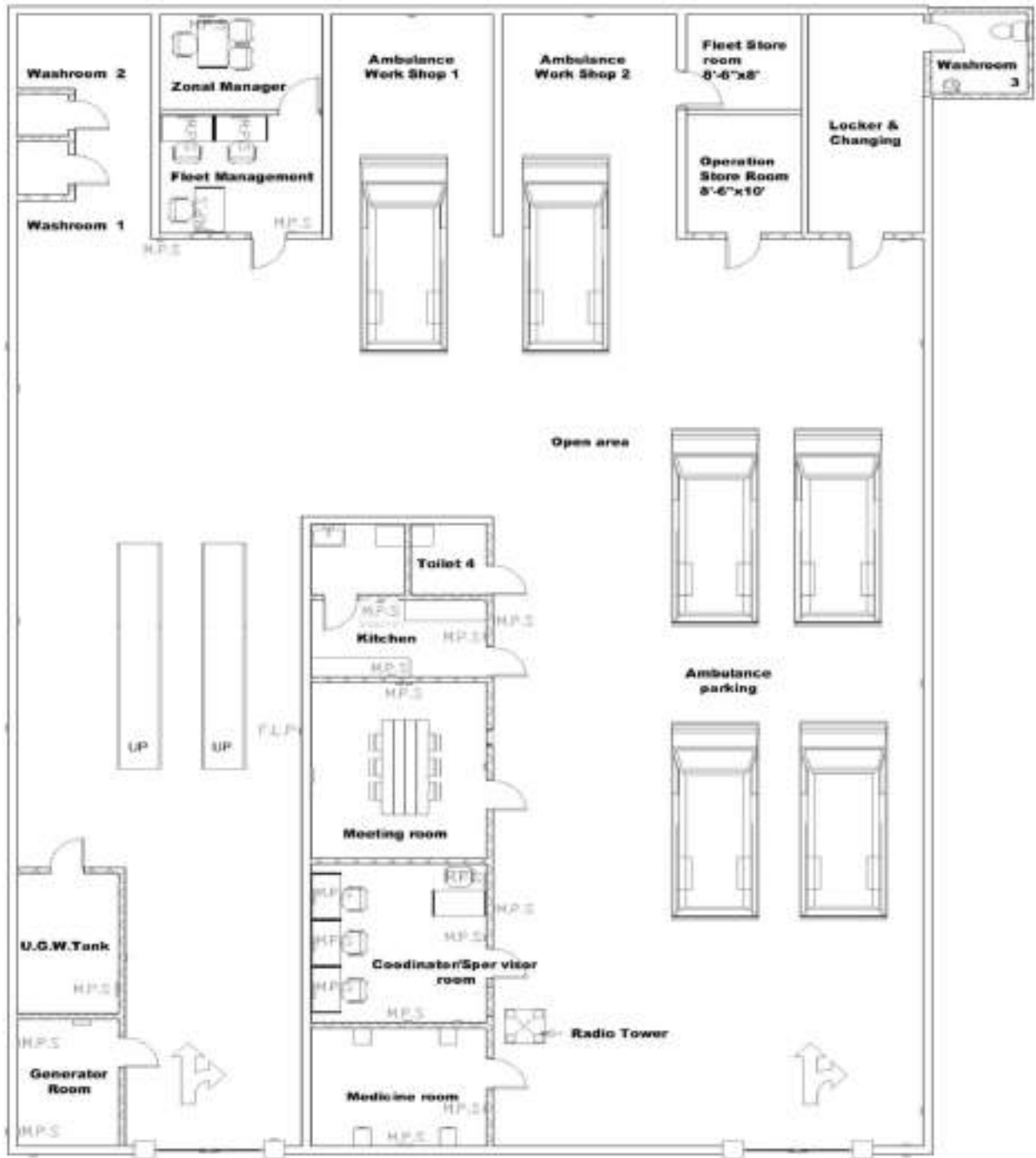
North Karachi Station(Camera Layout Plan)



North Karachi Station(Lighting Point)



**North Karachi Station(Passive Networking)**



North Karachi Station(Power Point)

**ANNEXURE "E" SIEHS – MIRPURKHAS STATION**

S. NO.	DESCRIPTION	UOM	QTY
<b>MIRPURKHAS AMBULANCE STATION REFURBISHMENT WORK - CIVIL</b>			
1	Dismantling / removing of existing constructed structures, fixtures, tools & equipment's with all necessary precautionary measures, stacking useable dismantled materials at designated place and disposal of surplus stuff etc. from site, (block masonry, Pavers, dado/ floor tiles, wooden/ glass door, windows, plaster, wooden partition, aluminum tile, false ceiling, roller shutter, AC / Electrical / Plumbing or any other item which is required to be demolished / removed but not mentioned above) in the basement floor. Make smooth plaster finished wall & smooth tile/marble finished floor (Match with existing floor)/wall after dismantling work.	Sq.ft	60
2	Earth filling verandah subbase gravels for paver : Earth filling from approved borrow area 1st class earth to be filled without vegetation & also with proper ramming & compaction layer by layer no exceeding 6" as per instruction of engineer in-charge.AASHTO standard compaction	Cft	330
3	PAVER BLOCK flooring:- Providing and laying 60mm thick factory made 1st class cement concrete interlocking paver block of M -40 grade or 6000psi made by block making machine with strong vibratory compaction and of approved size and design/ shape laid in required colour and pattern over and including 50mm thick compacted bed of course sand, filling the joints with coarse sand etc. all complete as per the direction of SIEHS Nominated Person.	Sft	250
4	PARTITION WALL Brick Masonry 1:4 : Providing supplying & fixing of 1st class brick masonry with SR cement complete work in all respect with proper finishing & curing with sweet water all work to be approved by SIEHS Nominated Person.	Cft	70
5	Plaster walls (1:4):- Providing and rendering 16mm thick cement mortar finish in double layer 1:4 (1 cement : 4 fine sand) using screened clean sand on internal surfaces of bricks or concrete surfaces including providing neeru finish to a thickness of about 1.5mm finished smooth with steel trowel including preparation of surface ,curing etc at all levels /heights & locations complete as specified and directed by SIEHS Nominated Person.	Sft	100
<b>INTERNAL PAINT WORK:</b>			
6	In case of Grey structure - Applying 3 Coats of water base Plastic emulsion Paint i/c primary coat of chalk and preparing base surface and filling where as required specifications etc complete in all respects as per SIEHS authorized person (Brand: ICI / Burger/ Nelson / Reliance / Gobis or equivalent)	Sqft.	100



S. NO.	DESCRIPTION	UOM	QTY
<b>EXTERNAL PAINT WORK:</b>			
7	Provide and apply with roller Matt Enamel Paint weather shield (approved brand) minimum 03 coats of approved shade over a coat of primer to scrapped surfaces of walls, base preparation, primer, smooth filling etc. all to be done in strict accordance with the manufacturers specification complete in all respect as directed by Engineer (Brand: ICI / Burger/ Nelson / Reliance / Gobis or equivalent)	Sqft.	100
<b>CEILING PAINT:</b>			
8	Applying 2 Coats of water base Distemper Paint i/c primary coat of chalk and preparing base surface and filling where as required specifications etc complete in all respects as per SIEHS authorized person (Nelson / Reliance / GOBIS / Glamour)	Sqft.	50
9	TOTAL covered area Roof screeding 1:2:4 PCC:	Sft	100
10	Roof water proofing:-Water proofing with Bitumen, membrane & water proofing chemical	Sft	200
11	Repair & paint/polish of existing door/window frame chokhat & grills	NOS	2
12	Provide supply fixing of wooden Door (3x7)ft without frame	NOS	1
13	Fixing of Net on washroom and Kitchen Vent	NOS	2
14	Net replacement of Existing door (3.5' x 7') Door (3.5x7)ft includes mosquito proof net door repair	NOS	2
15	Installation of ambulance M.S.Angle iron ramp for ambulance washing purpose 14 guage angle iron size 2" total length 7' X 2' High 1'-6" slope 4' X 2' Rest area 3' X 2'	NOS	2
<b>CARPENTRY WORK:</b>			
16	Providing & Installation of 1/2" th lamination top Kitchen Cabinets with door shutter edges pvc finish, center partition, locks, hinges handles size L6'-2" X H2'-0" X D1'-6"	Sft	80
17	Providing & Installation of 1/2" th lamination base Kitchen Cabinets with partal framing 1-1/2"x2" door shutter edges pvc finish, center partition, locks, hinges handles size L6'-2" X H2'-4" X D2'-4" marble top with chamfered edges size 6'-2"x2'-6"	Sft	80
18	Providing Fiber tank 500 US Galons L: 88 inch X W: 47 inch X H: 48 inch MASTER 5 year warranty	No.	1
19	Providing and making of ambulance disinfecting area including water supply line, drain system with chamber size L2'xW2'xH4'for dewatering	L.S	1
20	Providing & making pantry including marble top, sink with mixer, supply line & drainage connection marble with sink Size 2'x4'	L.S	1

**QAZI AHMED AMBULANCE STATION REFURBISHMENT WORK - IT INFRASTRUCTURE**

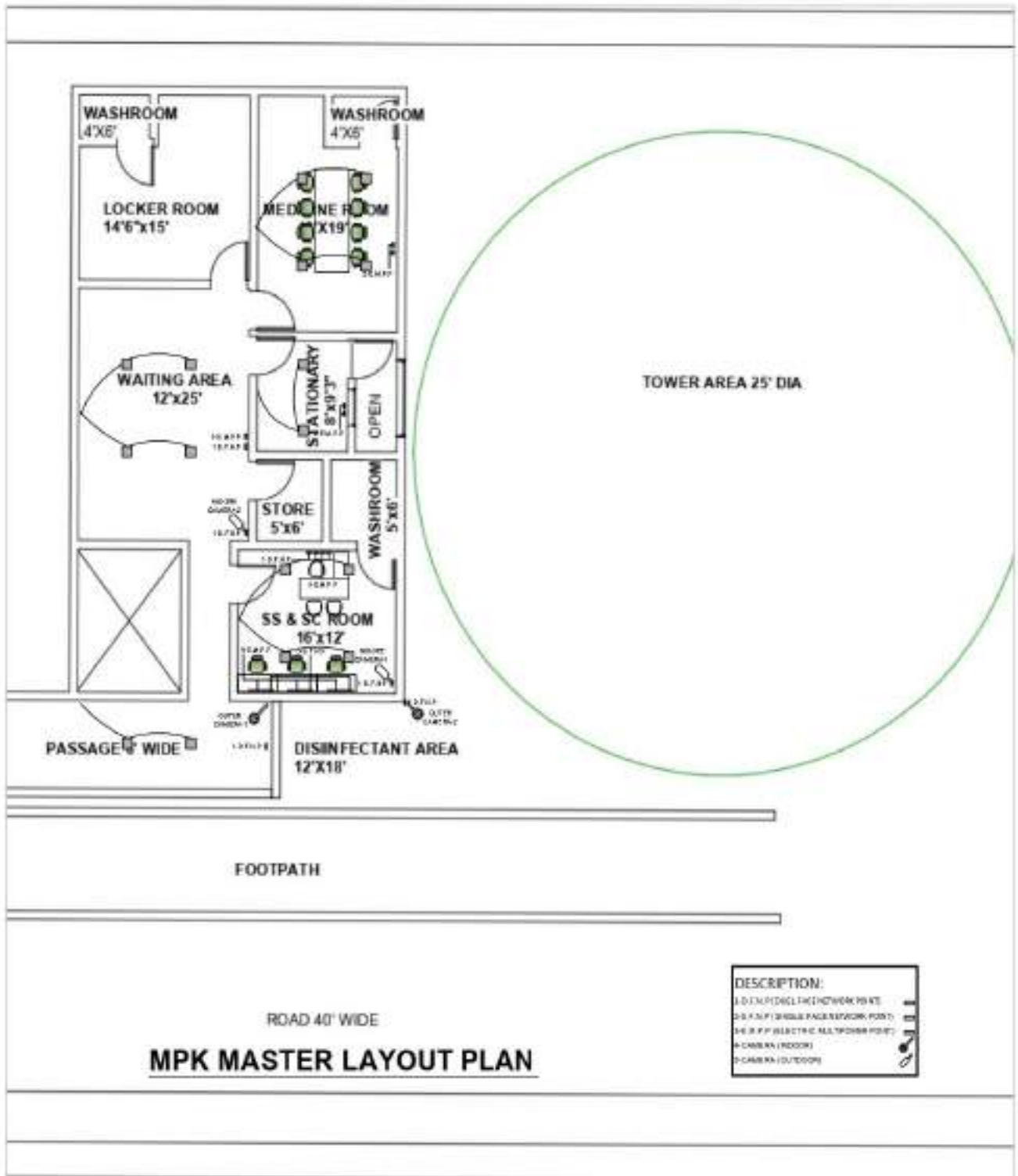
 <b>SINDH</b> <small>HEALTH SERVICES</small>	<b>SINDH INTEGRATED EMERGENCY AND HEALTH SERVICES</b> <b>TENDER DOCUMENTS</b>	<i>Refurbishment Works at various Stations &amp; Regional Office</i>
----------------------------------------------------------------------------------------------------------------------------------	----------------------------------------------------------------------------------	----------------------------------------------------------------------

1	<p>Passive Networking: Supply Cat6 (3M, Schneider equivalent) installation at both end (user IO and patch panel) conduit, conduit fitting, boxes, back boxes, termination &amp; all necessary accessories and fitting to complete the work.</p> <p>Vendor will provide and installation of 24 port patch panel (cat6), two eight socket PDU, Rack harnessing including data/ surveillance points testing and tagging.</p> <p>Dual face plate will be used in surveillance points and attendance device.</p> <p>Single face plate will be used in Desktop connections, printer point and supervisor desk.</p> <p>Two iron rod stand/ shade required for outdoor cams.</p>	Nos.	18
<b>QAZI AHMED AMBULANCE STATION REFURBISHMENT WORK - ELECTRICAL</b>			
1	Light Control Switches : Six/Four Gang 10/13A switch face plate for lighting control with back box, pvc conducting fitting complete in all aspects	Nos.	14
2	Supply & Installation of MDB	No.	1
3	Supply & Installation of MCCB/TP 150 Amp (03 pole)(Breaker Schneider / Hager)	Nos.	1
4	Supply & Installation of 20Amp Breaker (Single Pole)(Breaker Schneider / Hager)	Nos.	3
5	Supply & Installation of 16 Amp Breaker (Single Pole)(Breaker Schneider / Hager)	Nos.	4
6	Supply & Installation of 10 Amp Breaker (Single Pole)(Breaker Schneider / Hager)	No.	8
7	Reorganize & modify existing distribution board as per total electrical load, including Neutral, Earth Bar & Indication Lamps	Job	1
8	Supply & Installation 13A 2pin switch socket outlet clipsal/ Schneider /Orange or Equivalent	Nos.	0
9	Supply & Installation 13A multi / universal switch socket outlet clipsal/ Schneider /Orange or Equivalent	Nos.	22
10	Wiring for light and fans point 3/0.29 in channel patti (Pakistan Cables / Fast Cables/Newage or Equivalent)	Nos.	26
11	Wiring for mains with 2-7/.029 PVC wire on PVC casting and capping. (Pakistan Cables / Fast Cables/Newage or Equivalent)	Nos.	6
12	Wiring for main 2-7/0.44 PVC wire in casing capping	Nos.	2
13	Supply & installation of PVC conduit with accessories embed in wall / floor / ceiling or surface installed.	Nos.	46
14	04 Core 16mm <sup>2</sup> cable for main to MDB (Pakistan Cables / Fast Cables/Newage or Equivalent)	RFT	100
15	Light fixture LED ring holder lights. (Philips/Osaka/Tuff or equivalent)	Nos.	14

 <b>SINDH</b> <small>GOVERNMENT DEPARTMENT &amp; HEALTH SERVICES</small>	<b>SINDH INTEGRATED EMERGENCY AND HEALTH  SERVICES  TENDER DOCUMENTS</b>	<i>Refurbishment Works at  various Stations &amp;  Regional Office</i>	
------------------------------------------------------------------------------------------------------------------------------------------------------------------	----------------------------------------------------------------------------------	--------------------------------------------------------------------------------	--

16	Supply & Installation of ceiling fans 56" (Pak Fan/Royal fan or Equivalent)	Nos.	4
17	Supply & Installation of ceiling bracket fan 22" (Pak Fan/Royal fan or Equivalent)	Each	2
18	Supply & Installation of Exhaust fan 12"x12" (Pak Fan/Royal fan or Equivalent)	Nos	2
19	Lights and board and electric fitting work for 2 wash room, (Switch - 2, Socket 1)	Nos	2

**VOLUME "III" SIEHS – MIRPURKHAS STATION**



**ANNEXURE "F" SIEHS – QAZI AHMED STATION**

S. NO.	DESCRIPTION	UOM	QTY
<b>QAZI AHMED AMBULANCE STATION REFURBISHMENT WORK - CIVIL</b>			
1	Earth filling verandah subbase gravels for paver : Earth filling from approved borrow area 1st class earth to be filled without vegetation & also with proper ramming & compaction layer by layer no exceeding 6" as per instruction of engineer in-charge.AASHTO standard compaction	Cft	350
2	PCC LEAN FLOOR (1:3:6) Providing and laying Flooring plain cement concrete with Sr cement for concreting to be used approved by engineer in- charge.also screeding on top of the roof surface given thickness 1:3:6. Complete the work in all respects approved by SIEHS Nominated Person.	Cft	446
3	PARTITION WALL Brick Masonry 1:4 : Providing supplying & fixing of 1st class brick masonry with SR cement complete work in all respect with proper finishing & curing with sweet water all work to be approved by SIEHS Nominated Person.	Cft	132
4	Plaster walls (1:4):- Providing and rendering 16mm thick cement mortar finish in double layer 1:4 (1 cement : 4 fine sand) using screened clean sand on internal surfaces of bricks or concrete surfaces including providing neeru finish to a thickness of about 1.5mm finished smooth with steel trowel including preparation of surface ,curing etc at all levels /heights & locations complete as specified and directed by SIEHS Nominated Person.	Sft	550
5	Removing or scraping of all type of paint from walls i/c removal rubbish materials from site,	L.S	1
<b>INTERNAL PAINT WORK:</b>			
6	In case of Grey structure - Applying 3 Coats of water base Plastic emulsion Paint i/c primary coat of chalk and preparing base surface and filling where as required specifications etc complete in all respects as per SIEHS authorized person (Brand: ICI / Burger/ Nelson / Reliance / Gobis or equivalent)	Sqft.	5,000
<b>EXTERNAL PAINT WORK:</b>			
7	Provide and apply with roller Matt Enamel Paint weather shield (approved brand) minimum 03 coats of approved shade over a coat of primer to scrapped surfaces of walls, base preparation, primer, smooth filling etc. all to be done in strict accordance with the manufacturers specification complete in all respect as directed by Engineer (Brand: ICI / Burger/ Nelson / Reliance / Gobis or equivalent)	Sqft.	4,200
<b>CEILING PAINT:</b>			
8	Applying 2 Coats of water base Distemper Paint i/c primary coat of chalk and preparing base surface and filling where as required	Sqft.	1,300

 <b>SINDH</b> <small>HEALTH SERVICES</small>	<b>SINDH INTEGRATED EMERGENCY AND HEALTH SERVICES</b> <b>TENDER DOCUMENTS</b>	<i>Refurbishment Works at various Stations &amp; Regional Office</i>
----------------------------------------------------------------------------------------------------------------------------------	----------------------------------------------------------------------------------	----------------------------------------------------------------------

	specifications etc complete in all respects as per SIEHS authorized person (Nelson / Reliance / GOBIS / Glamour)		
9	Roof water proofing:-Water proofing with Bitumen, membrane & water proofing chemical	Sft	1,500
10	Repair & paint of existing door/window frame chokhat & grills	NOS	16
11	Provide supply & fixing of wooden Door (3x7)ft without frame	NOS	7
12	Provide supply fixing of wooden Door (3'-6"x7)ft without frame	NOS	1
13	Provide supply fixing of wooden Door (2'-6"x7)ft without frame	NOS	1
14	Repair & paint work of existing Wooden Windows	NOS	7
15	Fixing of Net on washroom and Kitchen Vent	NOS	3
16	Installation of ambulance M.S.Angle iron ramp for ambulance washing purpose 14 guage angle iron size 2" Total length 7' X 2' High 1'-6" slope 4' X 2' Rest area 3' X 2'	NOS	2
	<b>CARPENTRY WORK:</b>		
17	Providing & Installation of 1/2" th lamination top Kitchen Cabinets with door shutter edges pvc finish, center partition, locks, hinges handles size L6'-2" X H2'-0" X D1'-6"	Sft	57
18	Providing & Installation of 1/2" th lamination base Kitchen Cabinets with partal framing 1-1/2"x2" door shutter edges pvc finish, center partition, locks, hinges handles size L6'-2" X H2'-4" X D2'-4" marble top with chamfered edges size 6'-2"x2'-6"	Sft	60
19	EXISTING WASHROOM FITTING PLUMBING SANITARY WORK:- Supply provide and fix material includes complete sanitary work plumbing shower set W.C waste (Master/Shabbir/ICL or equivalent) net p trap u trap etc complete work as per technical specification & directed by by SIEHS Engineer in charge	Nos	3
20	Providing Fiber tank 500 US Galons L: 88 inch X W: 47 inch X H: 48 inch MASTER 5 year warranty	No.	1
21	Providing and making of ambulance disinfecting area including water supply line, drain system with chamber size L2'xW2'xH4'for dewatering	L.S	1
22	Providing & making pantry including marble top, sink with mixer, supply line & drainage connection marble with sink Size 2'x4'	L.S	1
<b>S. NO.</b>	<b>DESCRIPTION</b>	<b>UOM</b>	<b>QTY</b>

**QAZI AHMED AMBULANCE STATION REFURBISHMENT WORK - IT INFRASTRUCTURE**

 <b>SINDH</b> <small>HEALTH SERVICES</small>	<b>SINDH INTEGRATED EMERGENCY AND HEALTH SERVICES</b> <b>TENDER DOCUMENTS</b>	<i>Refurbishment Works at various Stations &amp; Regional Office</i>
----------------------------------------------------------------------------------------------------------------------------------	----------------------------------------------------------------------------------	----------------------------------------------------------------------

1	<p>Passive Networking: Supply Cat6 (3M, Schneider equivalent) installation at both end (user IO and patch panel) conduit, conduit fitting, boxes, back boxes, termination &amp; all necessary accessories and fitting to complete the work.</p> <p>Vendor will provide and installation of 24 port patch panel (cat6), two eight socket PDU, Rack harnessing including data/ surveillance points testing and tagging.</p> <p>Dual face plate will be used in surveillance points and attendance device.</p> <p>Single face plate will be used in Desktop connections, printer point and supervisor desk.</p> <p>Two iron rod stand/ shade required for outdoor cams.</p>	Nos.	18
---	--------------------------------------------------------------------------------------------------------------------------------------------------------------------------------------------------------------------------------------------------------------------------------------------------------------------------------------------------------------------------------------------------------------------------------------------------------------------------------------------------------------------------------------------------------------------------------------------------------------------------------------------------------------------------	------	----

**QAZI AHMED AMBULANCE STATION REFURBISHMENT WORK - ELECTRICAL**

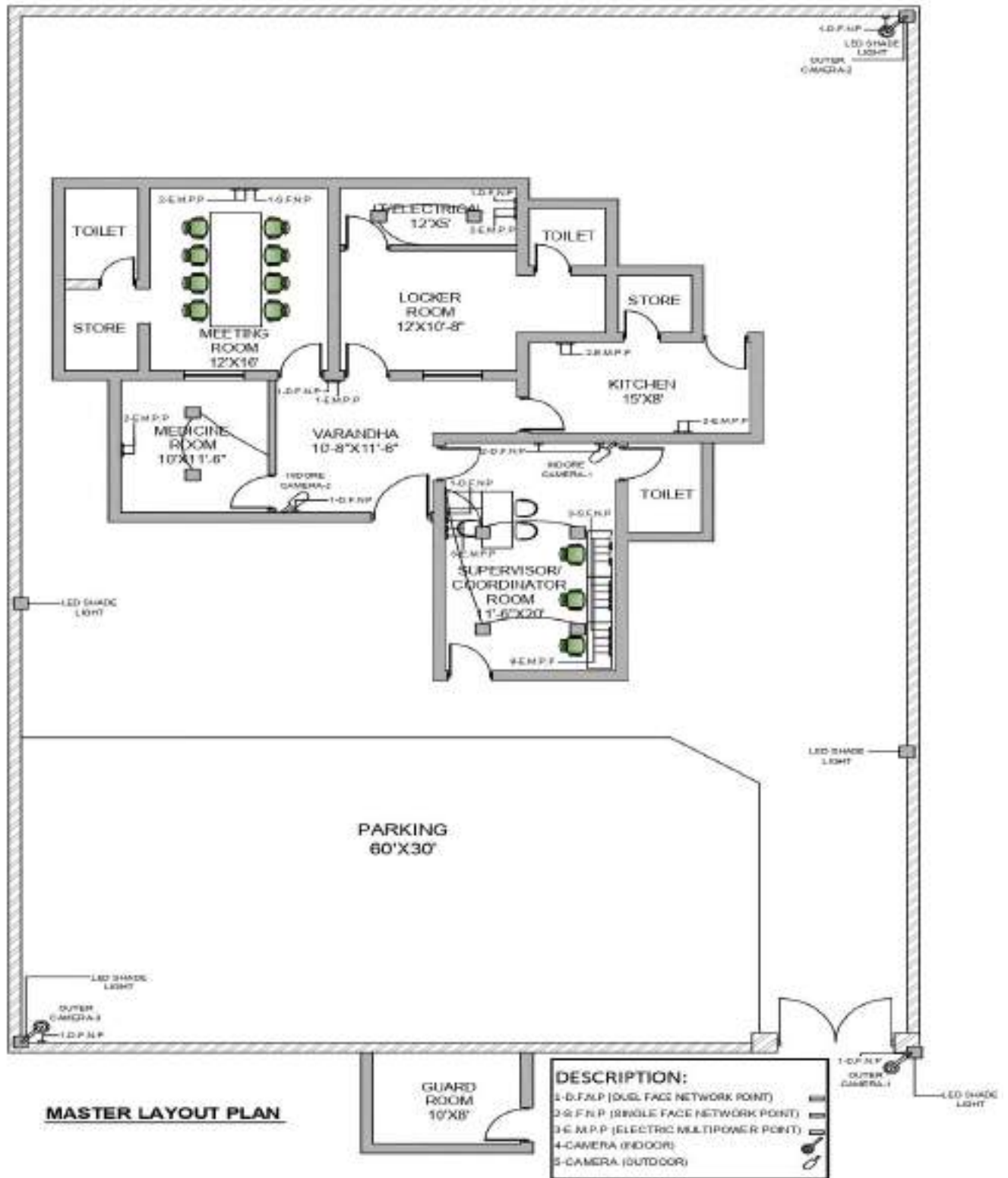
1	Light Control Switches : Six/Four Gang 10/13A switch face plate for lighting control with back box, pvc conducting fitting complete in all aspects	Nos.	14
2	Supply & Installation of MDB	No.	1
3	Supply & Installation of MCCB/TP 150 Amp (03 pole)(Breaker Schneider / Hager)	Nos.	1
4	Supply & Installation of 20Amp Breaker (Single Pole)(Breaker Schneider / Hager)	Nos.	3
5	Supply & Installation of 16 Amp Breaker (Single Pole)(Breaker Schneider / Hager)	Nos.	4
6	Supply & Installation of 10 Amp Breaker (Single Pole)(Breaker Schneider / Hager)	No.	8
7	Reorganize & modify existing distribution board as per total electrical load, including Neutral, Earth Bar & Indication Lamps	Job	1
8	Supply & Installation 13A 2pin switch socket outlet clipsal/ Schneider/Orange or Equivalent	Nos.	0
9	Supply & Installation 13A multi / universal switch socket outlet clipsal/ Shinder/Orange or Equivalent	Nos.	22
10	Wiring for light and fans point 3/0.29 in channel patti (Pakistan Cables / Fast Cables/Newage or Equivalent)	Nos.	26
11	Wiring for mains with 2-7/.029 PVC wire on PVC casting and capping. (Pakistan Cables / Fast Cables/Newage or Equivalent)	Nos.	6
12	Wiring for main 2-7/0.44 PVC wire in casing capping	Nos.	2
13	Supply & installation of PVC conduit with accessories embed in wall / floor / ceiling or surface installed.	Nos.	46
14	04 Core 16mm <sup>2</sup> cable for main to MDB (Pakistan Cables / Fast Cables/Newage or Equivalent)	RFT	100
15	Light fixture LED ring holder lights. (Philips/Osaka/Tuff or equivalent)	Nos.	14
16	Supply & Installation of ceiling fans 56" (Pak Fan/Royal fan or Equivalent)	Nos.	4

 <b>SINDH</b> <small>GOVERNMENT OF SINDH &amp; HEALTH SERVICES</small>	<b>SINDH INTEGRATED EMERGENCY AND HEALTH SERVICES TENDER DOCUMENTS</b>	<i>Refurbishment Works at various Stations &amp; Regional Office</i>	
----------------------------------------------------------------------------------------------------------------------------------------------------------------	----------------------------------------------------------------------------	----------------------------------------------------------------------	--

17	Supply & Installation of ceiling bracket fan 22" (Pak Fan/Royal fan or Equivalent)	Each	2
18	Supply & Installation of Exhaust fan 12"x12" (Pak Fan/Royal fan or Equivalent)	Nos	2
19	Lights and board and electric fitting work for 2 wash room, (Switch - 2, Socket 1)	Nos	2



**VOLUME "IV" SIEHS – QAZI AHMED STATION**



**ANNEXURE "G" SIEHS – REGIONAL OFFICE SUKKUR**

S. NO.	DESCRIPTION	UOM	QTY
<b>REGIONAL OFFICE REFURNIBISHMENT WORK - CIVIL WORK</b>			
1	Dismantling / removing of existing constructed structures, fixtures, tools & equipment's with all necessary precautionary measures, stacking useable dismantled materials at designated place and disposal of surplus stuff etc. from site, (block masonry, dado/ floor tiles, wooden/ glass door, windows, plaster, wooden partition, aluminum tile, false ceiling, roller shutter, AC / Electrical / Plumbing or any other item which is required to be demolished / removed but not mentioned above) in the basement floor. Make smooth plaster finished wall & smooth tile/marble finished floor (Match with existing floor)/wall after dismantling work.	Sq.ft	611
2	SRC Cement Plaster in Ratio 1:6 (15 mm Thick) i/c floating coat of cement in proper design & profile on walls/beams & columns. This rate also i/c providing expanded metal at the joint of R.C.C. Members and block masonry where as required etc complete in all respect as per specification and drawings and approval of SIEHS authorized person Brand (Lucky, Falcon or equivalent duly approved by SIEHS Nominated person)	Sq.ft	20
3	Applying 2 Coats of Plastic emulsion Paint i/c wall putty filling and preparing base surface and plaster of paris where as required specifications etc complete in all respects as per SIEHS authorized person (Nelson / Reliance / GOBIS / Glamour or equivalent)	Sq.ft	2,000
4	Providing and fixing partition framing shall consist of Heavy duty Aluminium Box Sections (Bronze) 50mm x 50mm @ 600mm c/c both ways Horizontally and Vertically. The vertical alternate frames to be fixed to the ceiling with necessary fixtures. The framing shall be finished with 8 mm thk. Providing 8mm approved make clear froasted glass shall be provided above 2'-6" from ffl or as per SIEHS authorized person. Rate shall be inclusive of necessary hardware items, etc. Complete in all respect.	Sq.ft	650
5	Providing and installation of 5'x7' aluminum sliding door (Box section) with 6mm thick glass panel with floor machine, door handles and locks Complete in all respects.	Sq.ft	130
6	Providing & Installation of Window Roller Blinds SKU: 11fd965d6852 Fabric thickness 0.22mm , 0.15-longer life and durability of fabric , multiple washes Color shade will provide vendor for selection	Sq.ft	1,000

7	Providing & Installation of MS 1 1/2" X 2" rectangular framing with frame size 2' X 2' Holding column pipe 3" dia 16 guage 10' height MS pipe with 4 mm Corrugated UPVC roofing sheet having flexural strength of 60 MPA complete application of red oxide & paint.	Sq.ft	1,000
8	Providing & Installation PVC Wall Paneling 8mm thick back side wall supporting with Aluminum/PVC fitting clip, Size of paneling Full height floor to ceiling (Height 9') with PVC border finish (Supplier will provide sample, Approx. area 500 Sqft).	Sq.ft	500
9	Installation of ambulance M.S. Angle iron ramp for ambulance washing purpose 14 guage angle iron size 2" total length 7' X 2' High 1'-6" slope 4' X 2' Rest area 3' X 2'	Nos.	2
10	Make CC 1:2:4, 6" thick slab 10,000psi for Ambulance Disinfectant Floor 12'x16' complete in all respect as directed by engineer.	cft	96
11	Providing/laying terracotta tile 12"x12" of approved strength and design on CC floor 12'x16'	Sq.ft	200
12	Providing, fixing, cutting, jointing and testing uPVC piping confirming to ISO 3633:1991 (wall thickness=3.2 mm) including uPVC fittings(Y-Tee, elbows, bends, Air pipe Cap/Caval.) with solvent cement jointing Dadex make "Nikasi Type B" or approved equal, rates include cost of cutting through walls and providing sleeves through concrete slabs for pipelines and pipe fittings with the 4" Dia uPVC Floor Drain of approved design with PVC grating including requisite number of holes in wall plinth or floor for pipe connection and making good the same as necessary with non-shrink grout. Length 40 feet approximately As per site requirement.	Job	1
13	Providing and making of brick masonry (1:5) cement sand mortar manhole of internal size as below as per site requirement including excavation PCC (1:4:8) 4" thick under foundation and bed, making benching with cement concrete (1:2:4) plastering (1:3) cement sand mortar inside and outside & two coats of bitumen painting on outer wall, RCC top slab, including reinforcement steel, 18" dia, heavy duty C.I manhole cover of C.I (NPC, CME Engg). complete in all respect. 2'x2' size.	Job	1
14	<b>DATA CENTRE</b>		
	<b>Fire Rated Paint (Inside Room only):</b> Supply of Fire rated paint with base, back filling leveling 2 layers complete in all respects.	Sq.ft	100

 <b>SINDH</b> <small>HEALTH SERVICES</small>	<b>SINDH INTEGRATED EMERGENCY AND HEALTH SERVICES</b> <b>TENDER DOCUMENTS</b>	<i>Refurbishment Works at various Stations &amp; Regional Office</i>
----------------------------------------------------------------------------------------------------------------------------------	----------------------------------------------------------------------------------	----------------------------------------------------------------------

	<b>Vinyl flooring SD (Static Dissipative):</b> For Data Center Supply of Vinyl flooring SD (Static Dissipative) (UK) vinyl flooring, Tested to IEC 61340-4-1 2003 RG, the flooring must have a resistance between 1x106 to 1x109 ohms, thickness 2mm - (UK) self level smoothing compound @3mm thickness with Installation of vinyl flooring. - Supply of florCove former (UK) with fixing. - Bonding strip (plus/square) - 1 inch black rubber cove former	Sq.ft	120
15	<b>C &amp; C counter - with accessories</b> <ul style="list-style-type: none"> <li>• Linear Workstation with Separator</li> <li>• Size: (mm) W: 900 D: 508 H: 762</li> <li>• High density 19.05 mm thick Plywood with two side lamination</li> <li>• 2 mm thick PVC lipping</li> <li>• Keyboard Tray</li> <li>• Metal base frame charcoal grey powder coated paint</li> <li>• Made of 63.5 / 63.5mm mild steel square pipe</li> </ul>	Nos.	26
<b>REGIONAL OFFICE REFURNIBISHMENT WORK - ELECTRICAL &amp; NETWORK WORK</b>			
<b>S. NO.</b>	<b>DESCRIPTION</b>	<b>UOM</b>	<b>QTY</b>
1	Providing of MDB AC With circuit Breaker Complete.1 Number MCCB/TP 250 Amp,10 Number 20Amp,10 Number 16 Amp,10 Number 10 Amp Including Neutral, Earth Bar & Indication Lamps.(Breaker Schneider / Hager)	Nos.	2
2	Installation, testing & commissioning of ATS Panel for 80 KVA Generator	Job.	1
3	Supply 80 KVA PHASE REVERSAL DISTRIBUTION BOARD (Manual operated)	Nos.	1
4	Single-phase load management (shifting & re-termination of building single-phase load & essential power load shifting DB for 50 KW	Job.	3
5	Providing, installation, testing, commissioning and termination of following size of CU/PVC/PVC & CU/XLPE/PVC Cables for Distribution Board in PVC conduit/Cable Tray, including all accessories, Complete in all respect as per required. Pakistan cable, Fast Cables, Newage or equivalent		
i	25mm 4-Core	Rft	150
li	16mm 4-Core	Rft	100

 <b>SINDH</b> <small>HEALTH SERVICES</small>	<b>SINDH INTEGRATED EMERGENCY AND HEALTH SERVICES</b> <b>TENDER DOCUMENTS</b>	<i>Refurbishment Works at various Stations &amp; Regional Office</i>
----------------------------------------------------------------------------------------------------------------------------------	----------------------------------------------------------------------------------	----------------------------------------------------------------------

6	Wiring for main 2-7/0.44 PVC wire in casing capping	Nos.	10
7	Wiring for mains with 2-7/.036 PVC wire on PVC casting and capping.	Nos.	20
8	Wiring for mains with 2-7/.029 PVC wire on PVC casting and capping.	Nos.	20
9	LED Ceiling & surface Lights 18 Watt Philips, Osaka or equivalent	Nos.	30
10	LED Bulb - 18 watt - Thread type Philips, Osaka or equivalent	Nos.	10
11	LED Flood Light - 100 watt- Philips, Osaka or equivalent	Nos.	2
12	LED Flood Light - 50 watt - Osaka / Tuff Philips, Osaka or equivalent	Nos.	6
13	Wiring for light and fans point 3/0.29 in channel patti including socket with required gang size clipsal or equivalent	Nos.	30
14	Providing and Fixing Multi Socket Double 13 AMP (Clipsal or equivalent)	Nos.	157
15	Providing & Installation of VGA Cable length 20 mtr for Projector with conduits	Nos.	4
16	Providing & Installation of HDMI Cable length 20 mtr for Projector with conduits	Nos.	4
17	Providing & installation of Network cat-6 cable (3M/Schneider or Equivalent for Data, Surveillance Cameras, Laptop, Desktop, Attendance, WiFi, Printer devices & Backbone) laying, termination, tagging and testing at user end Chanel Patti laying, fixing and I/O punching(as per layout)	Nos.	160
18	Providing & installation of Network cat-7 cable (3M/Schneider or Equivalent for Backbone) laying, termination, tagging and testing at user end Chanel Patti laying, fixing and I/O punching(as per layout)Around 250 feet	Nos.	3
19	Punchless Cat-6 io's clipsal or equivalent.	Nos.	320
20	IO Box for Data & Voice clipsal or equivalent.	Nos.	160
21	Single face plate for Data (3M/Schneider or Equivalent) (complete with Back box)	Nos.	100
22	Dual face plate for Data & Voice (3M/Schneider or Equivalent) (complete with Back box)	Nos.	60
23	Installation of Wall mount screen fixing	Nos.	4
24	Installation of Projector Kit fixing, VGA/ HDMI cable laying in channel Patti clipsal or equivalent.	Nos.	4
25	Installation Wall mount speaker fixing, & Providing & laying sound cable termination in Amplifier	Job.	4
26	Providing & fixing 16 AMP multi socket / power plug (Clipsal, Orange or equivalent )	Nos.	30
27	Installation with wall angle Rawal Bolt etc Complete	Nos.	44
28	Supplying & Installation Extra Control Wire 110/76 connecting for Outer Unit. Pakistan cable, Fast Cables, Newage or equivalent	Rft	2000
29	Channel patti 40 x 40 mm	Rft	1000
30	Channel patti 60 x 60 mm	Rft	600
31	Shade & holder for outer Cameras	Nos.	8
32	Supply M.S CABLE TRAY 100X150 MM - 16SWG Powder Coated	Rft.	600

33	<b>DATA CENTRE</b>		
a	<b>ELECTRICAL PANELS</b>		
	Main Distribution Panel Indoor type Wall Mounted Composite IP40/42MCCB's TP for Main incoming, MCB's for UPS input MCB for Non critical load MCB for Air Conditions with timer circuit MCB for Lighting, Sockets, Power points etc., Digital Volt & Ammeter with phase indication lights.	Nos.	1
	<b><u>UPS Output Distribution Panel for Critical Load Indoor type IP40/42</u></b> MCB's for UPS Output MCB;s for Racks Supply MCB;s for Sockets, Access Control, Fire system and other MCO for Change over Digital volt / ammeter and phase indication lights.	Nos.	1
b	<b>POWER CABLES</b> Pakistan cable, Fast Cables, Newage or equivalent - Unarmoured		
i	Supply of 4Core 2.5mm CU/PVC/PVC standard cable on cable tray/PVC laying material for UPS Input/output and	Rft.	60
ii	Bypass Supply of 1Core 2.5mm CU/PVC/PVC standard cable on PVC pipe laying material from Earth Pit to MDB	Rft.	180
iii	Supply of 3Core 1.5 mm CU/PVC/PVC standard cable on cable tray for racks pdu	Rft.	40
iv	Supply of 3Core 2.5 mm CU/PVC/PVC standard cable on cable tray/PVC laying material for 2 Ton Air conditions	Rft.	70
v	Supply of 1Core 2.5 mm (Green) CU/PVC/PVC cable on cable tray for Rack/Equipment earthing	Rft.	40
vi	Supply of 1Core 1.5 mm (Red/Black/Yellow/Blue) CU/PVC/PVC wiring from D.B to switch, phase plate, tech box in appropriate size of PVC conduit as per requirement complete with all accessories	Rft.	20
vii	Supply of 1Core 1.5 mm (Red/Black/Yellow/Blue) CU/PVC/PVC wiring from face/Switch plate to first light, Point to Point, Access Control, Fire Panel and other in appropriate size of PVC conduit as per requirement complete with all accessories	Rft.	20
c	<b>ELECTRICAL ACCESSORIES</b>		
i	<b>CAT-6 Cable:</b> Supply of (3M/Schneider or Equivalent) Cat6 4 Pair U/UTP Cable, PVC, 305M Box	Roll	1

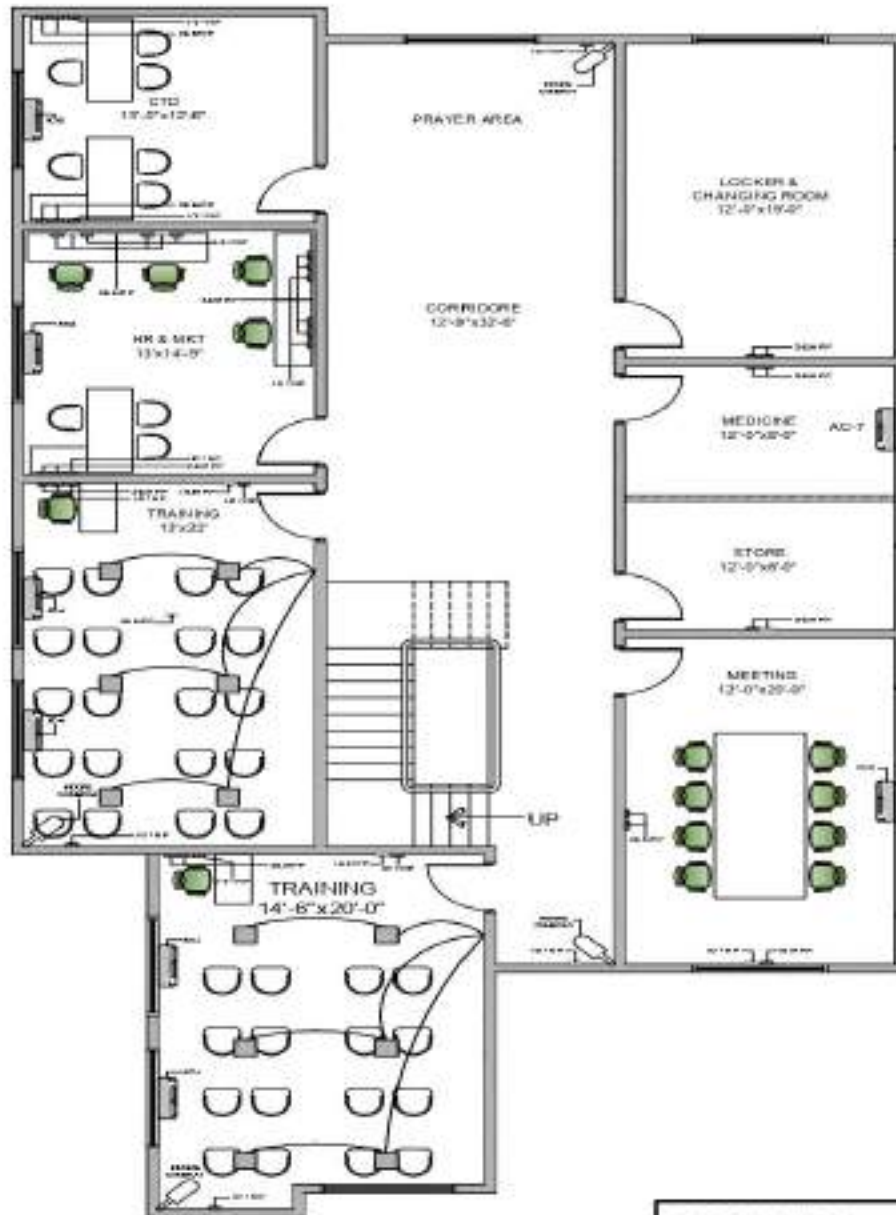
ii	<b>Light Control Switches</b> : Six/Four Gang 10/13A switch face plate for lighting control with back box, pvc conducting fitting complete in all aspects (Clipsal, Pakistan Cables, Orange or equivalent )	Nos.	2
iii	<b>Industrial Sockets:</b> 3 Pin 32A 230 volt / 50 Hz industrial Socket IP rated surface mounted type (Clipsal, Pakistan Cables, Orange or equivalent )	Nos.	8
iv	1 x 13A 3 Pin Flat Switched Socket with back box x Point for UPS (Clipsal, Pakistan Cables, Orange or equivalent )	Nos.	8
v	1 x 13A International Switched Socket with back box x Point for Row (Clipsal, Pakistan Cables, Orange or equivalent )	Nos.	5
vi	1 x 1 Gang Single Shuttered Cat 6 Data Outlet with back box x Point for Data	Nos.	3
vii	<b>LED Panel Lights</b> : Surface Mounted LED panel light fixture having 2'x2' 36Watt 4K including all accessories like chain, hanger, support etc (Philips, Osaka or equivalent)	Nos.	4
viii	<b>Emergency Lights</b> : Surface mounted self contained non maintained type emergency light fixture having 03 Watt LED rechargeable maintenance free battery (Philips, Osaka or equivalent) (size: 18"	Nos.	2
ix	Miscellaneous & Wiring Accessories (lugs, boots, Cable Tie, Tape, insulation, pvc pipe, flex pipe, junction box, elbows, Tee etc	Job.	1
<b>PROPOSED SOLUTION IN COMPLIANCE WITH THE REQUIREMENTS:</b>			
d	<b>GROUNDING &amp; BONDING</b>		
i	<b>EARTH PIT</b> : 35 Sqm.mm bare copper wire buried from Copper ground rod to building wall, with (10 ft x ¾ in) copper-clad steel ground rods spaced every along the ground loop. (Resistance should be less then 5 Ohms)	No.	6
ii	<b>GROUNDING BUS BAR</b> : Grounding bus bars, electroplated bus bar on wall insulators.		
iii	<b>EPC /ETP GROUNDING &amp; BONDING</b> : Main bus bar on wall/D.B, Lugs with boots terminated on server rack bus bar/Ground point etc		
e	<b>MECHANICAL WORK</b>		
i	<b>CABLE TRAY SYSTEM (Outside from Tower and Data Center Inside)</b>		
	Supply of MS Powder coated tray 150mm x 100mm with drops, hangers, support, top cover complete in all respects for data, power & hvac	Rft.	100
f	<b>ACCESS CONTROL SYSTEM</b>		
i	Finger Print + Card Reader + Pin Code Reader - Access Control System - for 2000 Users - Reading time 1 seconds - TCP/IP Based System - RS232 Connectivity - LCD Screen - Built in Access Control System	Nos.	2
ii	Electromagnetic Lock/ Bolt Lock		
iii	Infrared / push button		
iv	RFID card		

 <b>SINDH</b> <small>HEALTH SERVICES</small>	<b>SINDH INTEGRATED EMERGENCY AND HEALTH SERVICES</b> <b>TENDER DOCUMENTS</b>	<i>Refurbishment Works at various Stations &amp; Regional Office</i>
----------------------------------------------------------------------------------------------------------------------------------	----------------------------------------------------------------------------------	----------------------------------------------------------------------

v	Uninterrupted power supply connection		
vi	LAN / Power Cabling		
g	<b>SERVICES, INSTALLATION, COMMISSIONING CHARGES</b>		
i	IT Racks with PDU's (Installation and Harnessing)	Nos.	2
ii	Installation of CCTV SYSTEM with cameras	Nos.	20
34	<b>BASIC REQUIREMENTS</b>		
a	Preparation, submission & approval of As-Built drawing of the entire installation. The contractor should submit CD & Three sets of prints of As-Built drawing to the Client.	Job.	1
c	Preparation, submission & approval of fluke test reports of the entire installation. The contractor should submit reports of fluke test to the Client.	Job.	1
d	Submission & Approval of Megger Test report. The contractor should show insulation test in front of client and consultant ( circuit wiring test by 500 volt) and ( Power cable test by 1000 volt) result should be above 1 Mega ohm's	Job.	1
<b>S. NO.</b>	<b>DESCRIPTION</b>	<b>UOM</b>	<b>QTY</b>
<b>REGIONAL OFFICE REFURNIBISHMENT WORK - HVAC</b>			
1	Installation & testing & commissioning High ambient split type air conditions wall mounted with decorative grill electric-220 volt-50HZ, single phase capacity -18000Btu (1.5 Ton net capacity) out Door condenser tube 360 psi tested evaporator 180 psi tested operation condition ambient 55 celic use compressor (Rotary) T3 type tested on 60 celic use ambient. i/c making holes with diamond bit, nut, bolts including cartage etc complete in all respect. Installation, testing & commissioning of Split AC's may be wall mounted or floor standing.	Nos.	21
2	Supply, laying and fitting of Discharge / Liquid pvc flexible line of pipe size with insulation, control cable, testing, refrigerant (as per manufacturer recommendation) filling where necessary, supports complete in all aspect (Copper pipe: Muller- USA, Control wires: Pakistan cables, Fast cables, Newage or equivalent)	RFT	1000

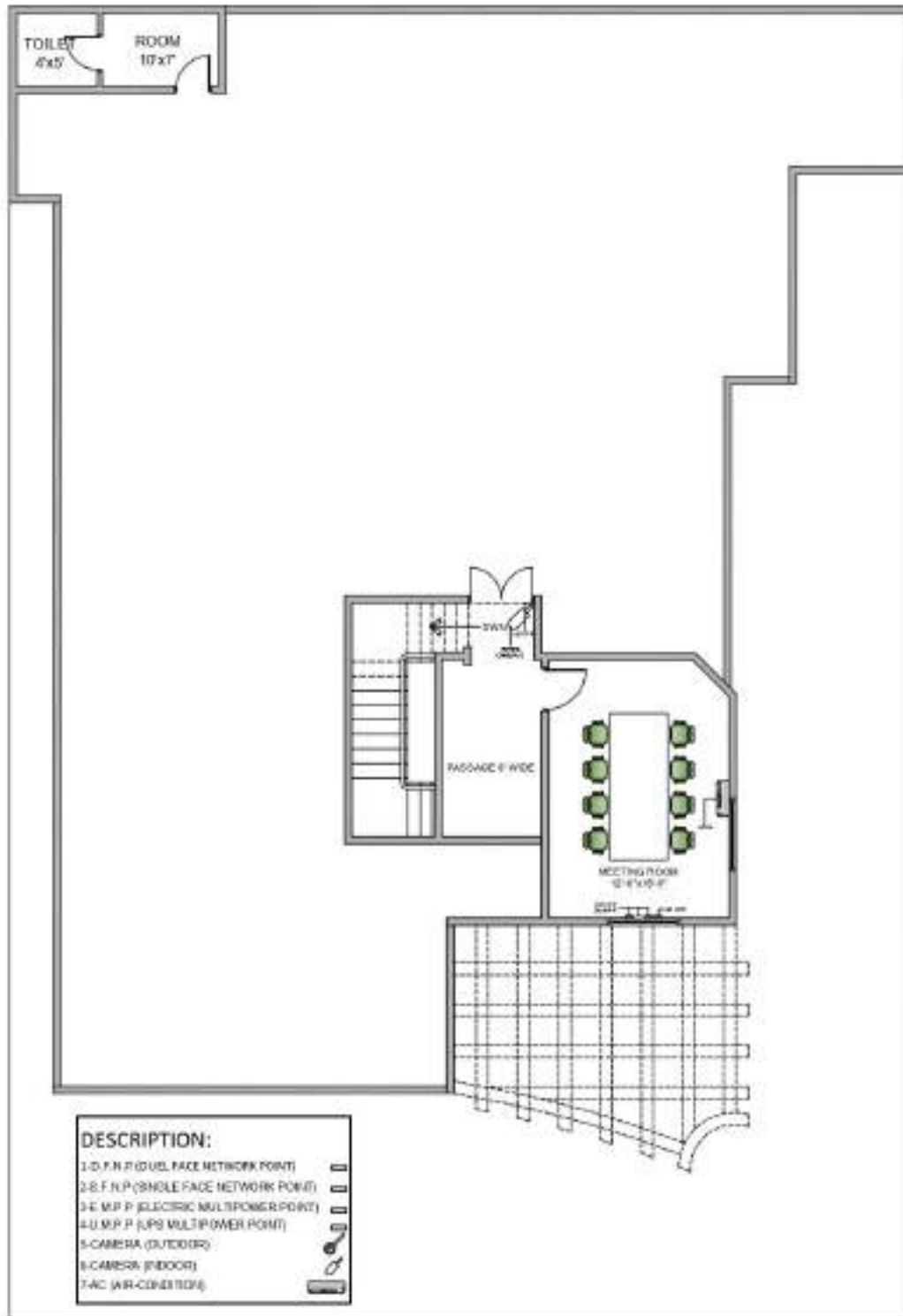


**VOLUME "V" SIEHS – REGIONAL OFFICE SUKKUR**

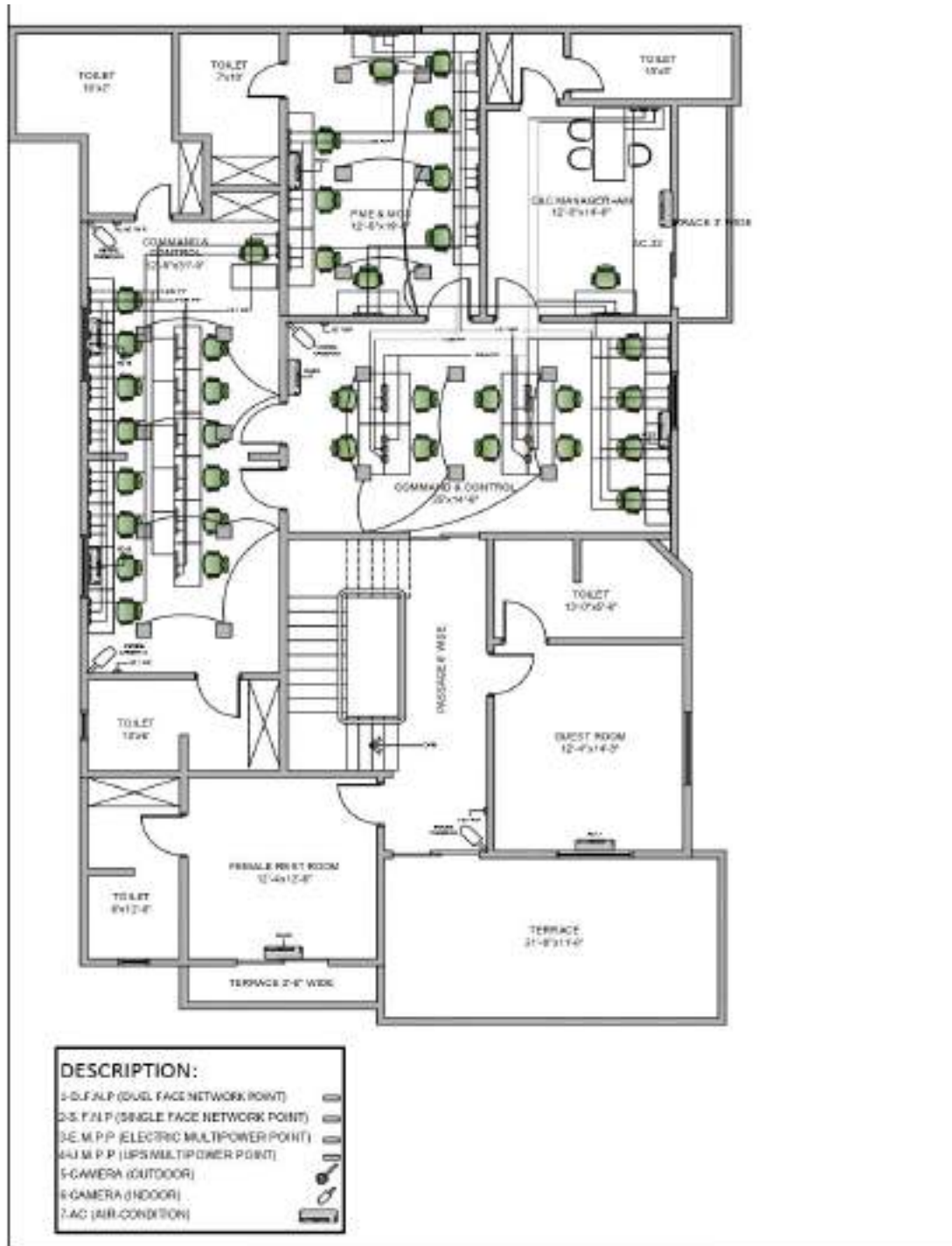


DESCRIPTION:	
1-D.F.N.P (DUAL FACE NETWORK POINT)	
2-S.F.N.P (SINGLE FACE NETWORK POINT)	
3-E.M.P.P (ELECTRIC MULTIPOWER POINT)	
4-U.M.P.P (UPS MULTIPOWER POINT)	
5-CAMERA (OUTDOOR)	
6-CAMERA (INDOOR)	
7-AC (AIR-CONDITION)	

**BASEMENT MASTER LAYOUT PLAN**



**MASTER 2ND FLOOR LAYOUT PLAN**



**MASTER FIRST FLOOR LAYOUT PLAN**



**ANNEXURE "H" SIEHS – MIRPUR MATHELO STATION**

S. NO.	DESCRIPTION	UOM	QTY
<b>MIRPUR MATHELO REFURBISHMENT WORK - CIVIL WORKS</b>			
1	Dismantling / removing of existing constructed structures, fixtures, tools & equipment's with all necessary precautionary measures, stacking useable dismantled materials at designated place and disposal of surplus stuff etc. from site, (block masonry, dado/ floor tiles, wooden/ glass door, windows, plaster, wooden partition, aluminum tile, false ceiling, roller shutter, AC / Electrical / Plumbing or any other item which is required to be demolished / removed but not mentioned above) in the basement floor. Make smooth plaster finished wall & smooth tile/marble finished floor (Match with existing floor)/wall after dismantling work.	Sq.ft	60
2	Earth filling verandah subbase gravels for paver : Earth filling from approved borrow area 1st class earth to be filled without vegetation & also with proper ramming & compaction layer by layer no exceeding 6" as per instruction of engineer in-charge.AASHTO standard compaction	Cft	96
3	PCC LEAN FLOOR (1:3:6) Providing and laying Flooring plain cement concrete with Sr cement for concreting to be used approved by engineer in- charge.also screeding on top of the roof surface given thickness 1:3:6. Complete the work in all respects approved by SIEHS Nominated Person.	Cft	350
4	CERAMIC TILE flooring:-Supplying & laying approved colour and brand anti skid matt finished 1st quality ceramic tiles of minimum 6.50 mm thick and of size not less than 600mm x 600 mm for flooring including bedding layer of 20mm average thick in CM 1:5, laid to proper slope , line and level including cement floating of joints, polishing and cleaning , filling the joints with white cement mixed with matching colour pigment complete as directed by the SIEHS Nominated Person.	Sft	960
5	PAVER BLOCK flooring:- Providing and laying 60mm thick factory made 1st class cement concrete interlocking paver block of M -40 grade or 6000psi made by block making machine with strong vibratory compaction and of approved size and design/ shape laid in required colour and pattern over and including 50mm thick compacted bed of coarse sand, filling the joints with coarse sand etc. all complete as per the direction of SIEHS Nominated Person.	Sft	3,660
6	Providing and making of Guard room size 5'x5' with 4inch thick Masonary wall with both side OPC cement plaster 12mm thickness with 2inch thick Precast RCC roof slab slab of size 8'x8'. providing and fixing electrical supply and 01nos royal bracket fan in it.	Sq Ft	182

 <b>SINDH</b> <small>HEALTH SERVICES</small>	<b>SINDH INTEGRATED EMERGENCY AND HEALTH SERVICES</b> <b>TENDER DOCUMENTS</b>	<i>Refurbishment Works at various Stations &amp; Regional Office</i>
----------------------------------------------------------------------------------------------------------------------------------	----------------------------------------------------------------------------------	----------------------------------------------------------------------

7	Plaster walls (1:4):- Providing and rendering 16mm thick cement mortar finish in double layer 1:4 (1 cement : 4 fine sand) using screened clean sand on internal surfaces of bricks or concrete surfaces including providing neeru finish to a thickness of about 1.5mm finished smooth with steel trowel including preparation of surface ,curing etc at all levels /heights & locations complete as specified and directed by SIEHS Nominated Person.	Sft	1,200
<b>INTERNAL PAINT WORK:</b>			
8	In case of Grey structure - Applying 3 Coats of water base Plastic emulsion Paint i/c primary coat of chalk and preparing base surface and filling where as required specifications etc complete in all respects as per SIEHS authorized person (Brand: ICI / Burger/ Nelson / Reliance / Gobis or equivalent)	Sqft.	4,400
<b>EXTERNAL PAINT WORK:</b>			
9	Provide and apply with roller Matt Enamel Paint weather shield (approved brand) minimum 03 coats of approved shade over a coat of primer to scrapped surfaces of walls, base preparation, primer, smooth filling etc. all to be done in strict accordance with the manufacturers specification complete in all respect as directed by Engineer (Brand: ICI / Burger/ Nelson / Reliance / Gobis or equivalent)	Sqft.	3,200
<b>CEILING PAINT:</b>			
10	Applying 2 Coats of water base Distemper Paint i/c primary coat of chalk and preparing base surface and filling where as required specifications etc complete in all respects as per SIEHS authorized person (Nelson / Reliance / GOBIS / Glamour)	Sqft.	1,000
11	RCC COLUMNS FOR GATE (1:2:4) :- Providing and Laying in position Reinforced cement concrete machine mixed and machine vibrated design mix cement concrete of below specified grade for structural elements, reinforced cement concrete using crushed stone graded aggregate 3/4" (19mm) and down gauge and bolari sand as per specification having a minimum works cylinder crushing strength of 3500 psi at 28 days with a mix not leaner than (1:2:4) including fair face form work and its removal, compacting, leveling and curing & housekeeping etc. includes reinforcement of columns, Slab & beams see drawing All work complete as shown in drawing, notes, & in all respect as per technical specification & directed by by SIEHS Nominated Person.	Cft	96
12	Main gate MS 12'x6' Providing & Installation of main entrance iron gate 16 gauge square pipe frame size of pipe 1.5" inch X 1.5" inch with 18 gauge ms sheet complete with red oxide, paint, hinges & all accessories.	No	1
13	TOTAL covered area Roof screeding 1:2:4 PCC:	Sft	-
14	Roof water proofing:-Water proofing with Bitumen, membrane & water proofing chemical	Sft	1,702
15	Repair & paint of existing door/window frame chokhat & grills	NOS	18

 <b>SINDH</b> <small>HEALTH SERVICES</small>	<b>SINDH INTEGRATED EMERGENCY AND HEALTH SERVICES</b> <b>TENDER DOCUMENTS</b>	<i>Refurbishment Works at various Stations &amp; Regional Office</i>
----------------------------------------------------------------------------------------------------------------------------------	----------------------------------------------------------------------------------	----------------------------------------------------------------------

16	Provide supply fixing of wooden Door (3x7)ft without frame	NOS	6
17	Provide supply fixing of wooden Door (3'-6"x7)ft without frame	NOS	1
18	Provide supply fixing of wooden Door (2'-6"x7)ft without frame	NOS	1
19	Repair & paint work of existing Wooden Windows	NOS	-
20	Fixing of Net on washroom and Kitchen Vent	NOS	3
21	Net replacement of Existing door (3.5' x 7') Door (3.5x7)ft includes mosquito proof net door repair	NOS	-
22	Installation of ambulance M.S.Angle iron ramp for ambulance washing purpose 14 guage angle iron size 2" total length 7' X 2' High 1'-6" slope 4' X 2' Rest area 3' X 2'	NOS	2
23	Providing and fixing (elephant brand) gypsum false ceiling 2'x2' with aluminum channel framing imported. etc.	Sqft.	-
<b>MIRPUR MATHELO REFURBISHMENT WORK - CARPENTRY WORKS</b>			
24	Providing & Installation of 1/2" th lamination top Kitchen Cabinets with door shutter edges pvc finish, center partition, locks, hinges handles size L6'-2" X H2'-0" X D1'-6"	Sft	57
25	Providing & Installation of 1/2" th lamination base Kitchen Cabinets with partal framing 1-1/2"x2" door shutter edges pvc finish, center partition, locks, hinges handles size L6'-2" X H2'-4" X D2'-4" marble top with chamfered edges size 6'-2"x2'-6"	Sft	60
<b>MIRPUR MATHELO REFURBISHMENT WORK - PLUMBARY WORKS</b>			
26	DRAINAGE SYSTEM:- Supply & providing of all materials, equipment's tools, testing commissioning and the installation workmanship as per the drawings and specifications and directions, Construction for sewerage system for utility effluent & sludge including drainage pipes conect manholes, septic tanks & soak pit, the work includes supplying installation commissioning providing fixing of above mentioned work with Excavation for Pipes to Achieve levels and prepare to Carry out Setting out main sewerage line and minor sewer lines Back fill with selected hardcore materials and compact to required level also fixing of pipes manhole covers ventilation pipes with proper jointing cutting & shaping, testing etc	L.S	1

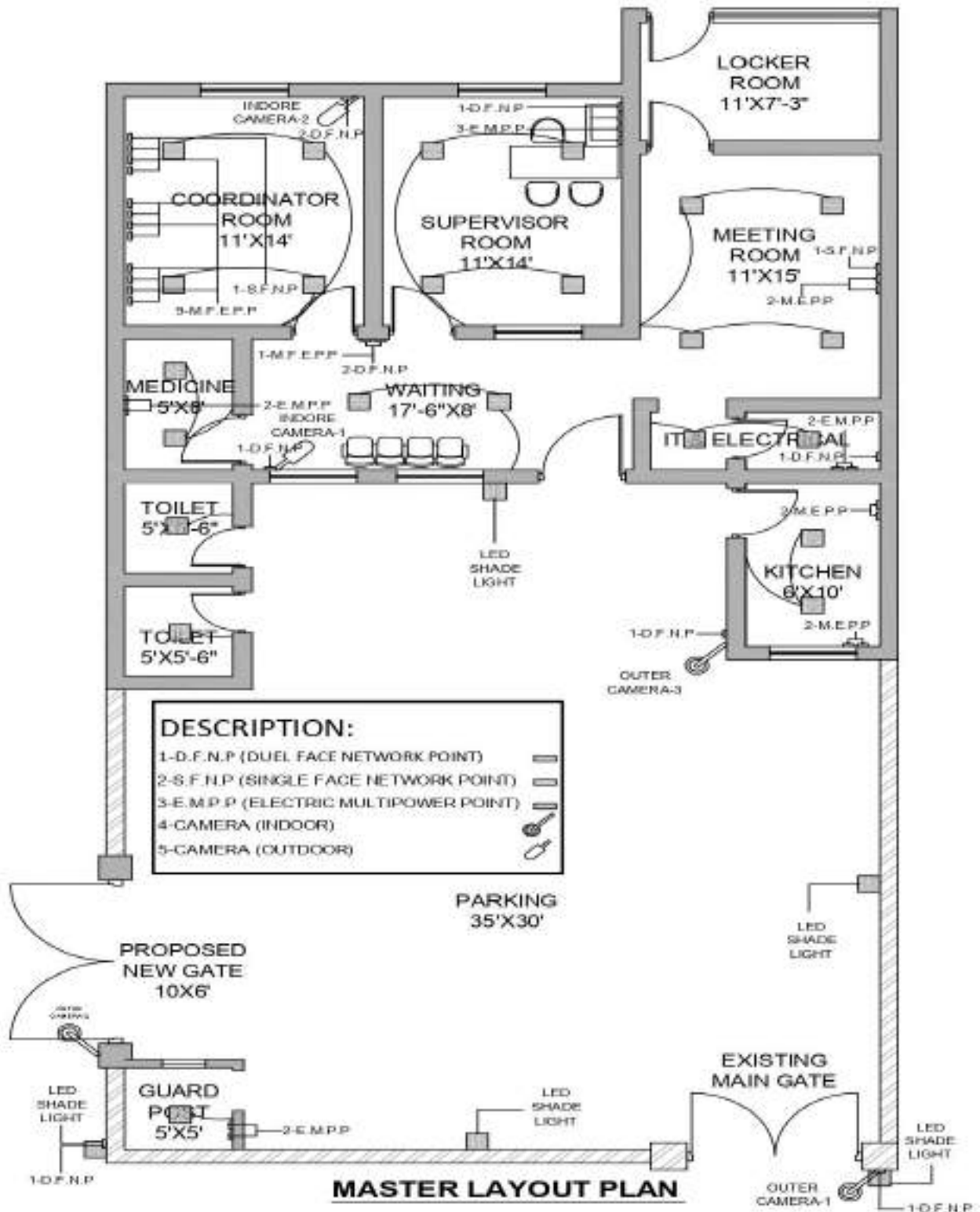
	depth shall be measured from inlet level to the outlet level all work complete in all respect as per technical specification & as directed by by SIEHS Engineer in charge.		
27	WASHROOM FITTING PLUMBING SANITARY WORK:- Supply provide and fix material includes complete sanitary work plumbing shower set W.C waste (Master/Shabbir/ICL or equalant) net p trap u trap etc complete floor & wall tile size 12"x16" toilet size 5'x5'-6" work as per technical specification & directed by by SIEHS Engineer in charge	Nos	2
28	Providing Fiber tank 500 US Galons L: 88 inch X W: 47 inch X H: 48 inch MASTER 5 year warranty	Each	1
29	Providing and making of ambulance disinfecting area including water supply line with pressure pump, drain system with chamber size L2'xW2'xH4'for dewatering	L.S	1
30	Providing & making pantry including marble top, sink with mixer, supply line & drainage connection marble with sink Size 2'x4'	L.S	1

S. NO.	DESCRIPTION	UOM	QTY
<b>MIRPUR MATHELO STATION REFURBISHMENT WORK - IT INFRASTRUCTURE</b>			
1	Passive Networking: Supply Cat6 (3M, Schneider equivalent) installation at both end (user IO and patch panel) conduit, conduit fitting, boxes, back boxes, termination & all necessary accessories and fitting to complete the work. Vendor will provide and installation of 24 port patch panel (cat6), two eight socket PDU, Rack harnessing including data/ surveillance points testing and tagging. Dual face plate will be used in surveillance points and attendance device. Single face plate will be used in Desktop connections, printer point and supervisor desk. Two iron rod stand/ shade required for outdoor cams.	Nos.	18



<b>MIRPUR MATHELO STATION REFURBISHMENT WORK - ELECTRICAL</b>			
1	Light Control Switches : Six/Four Gang 10/13A switch face plate for lighting control with back box, pvc conducting fitting complete in all aspects	Nos.	14
2	Supply & Installation of MDB	No.	1
3	Supply & Installation of MCCB/TP 150 Amp (03 pole)(Breaker Schnieder / Hager)	Nos.	1
4	Supply & Installation of 20Amp Breaker (Single Pole)(Breaker Schnieder / Hager)	Nos.	3
5	Supply & Installation of 16 Amp Breaker (Single Pole)(Breaker Schnieder / Hager)	Nos.	4
6	Supply & Installation of 10 Amp Breaker (Single Pole)(Breaker Schnieder / Hager)	No.	8
7	Reorganize & modify existing distribution board as per total electrical load, including Neutral,Earth Bar & Indication Lamps	Job	1
8	Supply & Installation 13A 2pin switch socket outlet clipsal/ Shinder/Orange or Equivalent	Nos.	0
9	Supply & Installation 13A multi / universal switch socket outlet clipsal/ Shinder/Orange or Equivalent	Nos.	22
10	Wiring for light and fans point 3/0.29 in channel patti (Pakistan Cables / Fast Cables/Newage or Equivalent)	Nos.	26
11	Wiring for mains with 2-7/.029 PVC wire on PVC casting and capping. (Pakistan Cables / Fast Cables/Newage or Equivalent)	Nos.	6
12	Wiring for main 2-7/0.44 PVC wire in casing capping	Nos.	2
13	Supply & installation of PVC conduit with accessories embed in wall / floor / ceiling or surface installed.	Nos.	46
14	04 Core 16mm <sup>2</sup> cable for main to MDB (Pakistan Cables / Fast Cables/Newage or Equivalent)	RFT	100
15	Light fixture LED ring holder lights. (Philips/Osaka/Tuff or equivalent)	Nos.	14
16	Supply & Installation of ceiling fans 56" (Pak Fan/Royal fan or Equivalent)	Nos.	4
17	Supply & Installation of ceiling bracket fan 22" (Pak Fan/Royal fan or Equivalent)	Each	2
18	Supply & Installation of Exhaust fan 12"x12" (Pak Fan/Royal fan or Equivalent)	Nos	2
19	Lights and board and electric fitting work for 2 wash room, (Switch - 2, Socket 1)	Nos	2

**VOLUME "VI" SIEHS – MIRPUR MATHELO STATION**



**GENERAL TERMS & CONDITIONS:**

1. Inspection requests [IRs] must be submitted 24 hours prior to initiation of work[s]. Works carried out without approval shall be deemed rejected / disapproved.
2. All the arrangements of Materials, Tools, Plants, Labour, etc. including necessary resource to carry out the said job is the responsibility of the Contractor/Successful Bidder.
3. The SIEHS nominated person has the authority to withhold the payment of defective works and may only be released after the rectification of the defects duly certified by the SIEHS nominated person.
4. The Contractor/Successful Bidder shall at all times take all reasonable precautions to prevent any unlawful riotous or disorderly conducts by or amongst Labour and employees and for the preservation of the person and properties at the site and in the neighborhood of the works.
5. Contractor/Successful Bidder shall ensure the safety of workers at site and implement the applicable safety rules and regulations. The Contractor/Successful Bidder shall provide all the necessary PPEs to the workers as well as supervisory staff without any extra charges.
6. Site housekeeping, Safety, Security and Storage of OFM/CFM Material: Unloading & shifting of Owner Furnished Material (OFM)/CFM to the respective floors shall be contractor's responsibility. Safety, Stores/Storage and Security of the material during storage and execution period shall be contractor's responsibility without any extra charges. Contractor/Successful Bidder shall make necessary arrangements e.g. cordon off in order to protect the OFM/CFM material without any extra charges till handing over. Any damage or deviation occurred in contractor's custody will oblige Contractor/Successful Bidder to reproduce the same without disturbing the project timelines. Contractor/Successful Bidder shall be responsible for site housekeeping
7. Cost of all those Works, services obligations and performances etc. which are required to be executed and/or are inferred to be executed by the Contractor/Successful Bidder as per the Contract Documents but not indicated or priced in the Bill of Quantities shall be deemed covered in the overall Contractor/Successful Bidder Price.
8. Electricity, Water Supply, Office Space, Internet & etc. All such arrangements for site works and office spaces shall be the responsibility of the Contractor/Successful Bidder.
9. On the basis of most advantageous bid, SIEHS reserves the right to split the order of the tender with respect to the location.
10. For the purposes of determining the best advantageous bid, facts other than price such as previous performances, previous experience, OEM Authorization, quality assurance, expertise, financial soundness and such other details, SIEHS at its discretion, may consider appropriate will be taken into consideration.
11. Coordination with stake holders: It is contractor's responsibility to coordinate with all stakeholders.
12. TECHNICAL SUBMITTALS, BOQ AND SHOP DRAWINGS:
  - a. Contractor shall submit the shop drawings after necessary coordination with Engineer and Design consultants, within one week after issuance of respective drawings. The shop drawings must be submitted in AutoCAD Version and hard form in triplicate.
  - b. Upon Substantial completion of works, contractor is required to submit As-Built Drawings (Soft & Hard Copies, 2 sets) with the final Bill within 10 working days, failing which, final bill will not be processed.
  - c. Final bill will be verified in ten (10) working days, time subject to receiving of complete information with the bill i.e. measurement sheets, test reports, as built drawings etc.

**ANNEXURE "I"**

**SIGN BOARD SKIN REPLACEMENT OF SIEHS NETWORK STATIONS WITHIN KARACHI**

DESCRIPTION	UoM	PECHS	NORTH NAZIMABAD	GULISTAN-E-JOHAR	KORANGI	SHAHLATIF TOWN-BIN QASIM	TOTAL
<b>INTERNAL STRUCTURE REPAIR &amp; PAINT WORK</b>							
Repair of structure if needed, Providing and applying of 02 coats of red oxide make Berger/ICI paint to the internal structure of signboards by removing the rust and paint through sand papers and grinding. Complete in all respect	Rft	60	60	60	60	60	240
<b>REPLACEMENT OF SKIN</b>							
This includes the removing and dismantling of old skin and installation of new skin, complete in all respect Description: 04 color printing on 400 GSM Vinyl Panaflex. Initial Artwork attached for reference.	Sq.ft	200	200	200	200	200	800
<p><b>Note:</b></p> <p>Rates will be inclusive of all applicable taxes</p> <p>Fabrication of structure, Installation of skin, Installation of board, loading/un-loading, transportation etc will be borne by successful bidder</p> <p>Rates will be lock till June 30, 2023</p> <p>Work will be executed on different interval of time before June 30, 2023 (i.e. Work will not be executed in a lot)</p> <p>SIEHS nominated person will share the artwork with respect to the location for execution</p> <p>Payment will be made on actual work executed at Site</p> <p>Verification of work will be done by SIEHS nominated person</p>							

**ANNEXURE "J"**

**SIGN BOARD SKIN REPLACEMENT OF SIEHS NETWORK STATIONS OTHER THAN KARACHI**

DESCRIPTION	UoM	THATTA	SAJAWAL	MIRPUR BATHORO	SAKRO	TOTAL
<b>INTERNAL STRUCTURE REPAIR &amp; PAINT WORK</b>						
Repair of structure if needed, Providing and applying of 02 coats of red oxide make Berger/ICI paint to the internal structure of signboards by removing the rust and paint through sand papers and grinding. Complete in all respect	Rft	100	40	40	40	620
<b>REPLACEMENT OF SKIN</b>						
This includes the removing and dismantling of old skin and installation of new skin, complete in all respect Description: 04 color printing on 400 GSM Vinyl Panaflex. Initial Artwork attached for reference.	Sq.ft	250	50	50	50	400
<p><b>Note:</b></p> <p>Rates will be inclusive of all applicable taxes</p> <p>Rates will be valid till June 30, 2023.</p> <p>Fabrication of structure, Installation of skin, Installation of board, loading/un-loading, transportation etc. will be borne by successful bidder</p> <p>Work will be executed on different interval of time before June 30, 2023 (i.e. Work will not be executed in a lot)</p> <p>SIEHS nominated person will share the artwork with respect to the location for execution</p> <p>Payment will be made on actual work executed at Site</p> <p>Verification of work will be done by SIEHS nominated person</p>						

**ANNEXURE "K"**

**SUPPLY & INSTALLATION OF NEW SIGN BOARD OF SIEHS NETWORK STATIONS  
WITHIN KARACHI**

DESCRIPTION	UoM	MALIR	NORTH KARACHI	SITE AREA/BALDIA	CLIFTON	TOTAL
<b>STURCTURE OF NEW SIGN BOARD</b>						
Supply & Installation of Structure 1" x 1" MS Square pipe of 18 guage Application of 02 coats of red oxide make Berger/ICI paint to the internal structure of signboards	Rft	60	60	60	60	240
<b>FIXING OF NEW SKIN ON SIGN BOARD</b>						
This includes installation of new skin, complete with all respect Description: 04 color printing on 400 GSM Vinyl Panaflex. Initial Artwork attached for reference.	Sq.ft	200	200	200	200	800
<p><b>Note:</b></p> <p>Rates will be inclusive of all applicable taxes</p> <p>Fabrication of structure, Installation of skin, Installation of board, loading/un-loading, transportation etc will be borne by successful bidder</p> <p>Rates will be lock till June 30, 2023</p> <p>Work will be executed on different interval of time before June 30, 2023 (i.e. Work will not be executed in a lot)</p> <p>SIEHS nominated person will share the artwork with respect to the location for execution</p> <p>Payment will be made on actual work executed at Site</p> <p>Verification of work will be done by SIEHS nominated person</p>						



**ANNEXURE "L"**

**SUPPLY & INSTALLATION OF NEW SIGN BOARD OF SIEHS NETWORK STATIONS OTHER THAN KARACHI**

DESCRIPTION	UoM	HYDERABAD	LARKANA	SHAHDARKOT	MIRPUR MATHELO	QAZI AHMED	GHARI KHUDA BUKSH	SUKKUR	MIRPUR KHAS	TOTAL
<b>STURCTURE OF NEW SIGN BOARD</b>										
Supply & Installation of Structure 1" x 1" MS Square pipe of 18 guage Application of 02 coats of red oxide make Berger/ICI paint to the internal structure of signboards	Rft	60	60	60	60	60	60	60	60	480
<b>FIXING OF NEW SKIN ON SIGN BOARD</b>										
This includes supply & installation of new skin, complete in all respect Description: 04 color printing on 400 GSM Vinyl Panaflex. Initial Artwork attached for reference.	Sq.ft	200	200	200	200	200	200	200	200	1,600
<p><b>Note:</b>            Rates will be inclusive of all applicable taxes            Rates will be valid till June 30, 2023.            Fabrication of structure, Installation of skin, Installation of board, loading/un-loading, transportation etc. will be borne by successful bidder            Work will be executed on different interval of time before June 30, 2023 (i.e. Work will not be executed in a lot)            SIEHS nominated person will share the artwork with respect to the location for execution            Payment will be made on actual work executed at Site            Verification of work will be done by SIEHS nominated person</p>										

## **SPECIAL CONDITIONS:**

---

**a) Cost of stamp duty**

0.35% of the contract value or as notified by the Government of Sindh, will be paid by Contractor/Successful Bidder as stamp duty.

**b) Penalty deduction formula**

In case of any delay in the agreed project completion timeline, the supplier may be charged @ 0.33% per day up to 10% of PO amount. SIEHS may in writing terminate the whole or part of this transaction and claim damages with respect to the loss suffered caused by such delay and/or terminate the purchase order without incurring any liability on its part.

**c) Termination of contract:**

If the Contractor/Successful Bidder does not resolve the problem for a prolonged period (as mutually agreed) for the services quality remains unsatisfactory despite the notices from fleet department, SIEHS reserve the right to cancel the contract on immediate basis.

**d) Payment terms:**

SIEHS standard payment terms are 45 days' credit after submission of correct invoice. Advance payments are discouraged. Under requirement of advance payment, successful bidder will be required to share a bank guarantee of same amount (inclusive of tax).

## **BIDDING PROCEDURE**

Bids should be submitted in accordance with instructions and bidding procedure shared in this document. Bids are invited as per Single Stage – Two Envelope Procedure in accordance with rule sub rule 2 of rule 46 of the Sindh Public Procurement Rules, 2010 (Amended 2022).

## **INSTRUCTIONS TO BIDDERS**

---

1. Bidder must read all the contents of invitation for bid / notice inviting tender as well as the bidding documents and understand all the requirements.
2. Bidder must ensure that the bid form is filled in all respect, without any confusion.
3. Bidder shall prepare two separate envelopes for technical as well as financial proposal.
4. Each document/paper submitted by the bidder shall be signed/stamped by the bidder on the face of document.
5. Bidder shall examine the bid evaluation criteria and insert appropriate document in the technical / financial Proposal accordingly.
6. All documents pertaining to financial / commercial matters such as quotation / rates, shall be inserted in the financial proposal. Original pay order of the bid security shall be inserted in the financial proposal.
7. There should not be any over-writing, double writing, crossed, additional conditions.
8. Rates are to be quoted clearly in digits as well as in words.



 <b>SINDH</b> <small>INTEGRATED EMERGENCY &amp; HEALTH SERVICES</small>	<b>SINDH INTEGRATED EMERGENCY AND HEALTH SERVICES</b> <b>TENDER DOCUMENTS</b>	<i>Refurbishment Works at various Stations &amp; Regional Office</i>
-------------------------------------------------------------------------------------------------------------------------------------------------------------	----------------------------------------------------------------------------------	----------------------------------------------------------------------

9. Bidder(s) must write the “TECHNICAL PROPOSAL” and “FINANCIAL PROPOSAL” on the face of relevant sealed envelopes containing relevant bid/offer in it.
10. Conditional bids, telegraphic bids, bids not accompanied by bid security of required amount and form, without tender fee, bids received after specific date and time and bids of black listed firms shall be treated as rejected / non-responsive.

### **ELIGIBILITY CRITERIA FOR BIDDERS**

Bidder which meets the following eligibility criteria / mandatory requirements would be declared responsive for further evaluation as per the evaluation criteria specified in this bidding document. Verifiable documentary proof for all following requirements is a mandatory requirement, noncompliance will lead to disqualification.

1. Bidder shall complete all the terms & conditions of this bidding document.
2. Bidder able to enclose the documents as per the list of required bidding document.
3. Companies must be available on List of Active Tax Payers” of FBR (for Income Tax) and GST / SRB (For Sales Tax) websites.
4. Details of turn-over of at least last two years supported by income tax return document.
5. Affidavit on Rs.100 stamp paper that the firm is not blacklisted & involved in any active litigation with GoP or GoS.
6. Undertaking to provide access for physical inspection of working area/factory/workshop at the time of evaluation and during execution of contract.
7. Tender Fee of Rs. 3,000 in shape of Pay order should be in favor of Sindh Integrated Emergency and Health Services (NTN# 4979065-0).

### **LIST OF DOCUMENTS TO BE ENCLOSED: -**

1. Bidder(s) must ensure that the following documents are enclosed with the **Technical Proposal**.
2. Complete bidding document, all technical literature & documents required for technical evaluation, including income tax return, affidavit, vendor information form and any other noncommercial document must be furnished in an envelope marked ‘TECHNICAL PROPOSAL’. This will be considered as acceptance of all terms & conditions of tender. Further, a photocopy of the bid security Pay order same shall be inserted in the Technical Proposal after hiding the amount. In case amount is not hidden, bid may be rejected at the time of observance of such situation.
3. Copy of NTN / Income Tax Registration Certificate, Sales Tax Registration Certificate / On line verification of Active Tax Payer for Sales Tax;
4. Minimum 2 years’ income tax return

 <b>SINDH</b> <small>INTEGRATED EMERGENCY &amp; HEALTH SERVICES</small>	<b>SINDH INTEGRATED EMERGENCY AND HEALTH SERVICES</b> <b>TENDER DOCUMENTS</b>	<i>Refurbishment Works at various Stations &amp; Regional Office</i>
-------------------------------------------------------------------------------------------------------------------------------------------------------------	----------------------------------------------------------------------------------	----------------------------------------------------------------------

5. Copy of CNIC of signatory of the Bid Form;
6. Audited Financial Statement of the bidder for last three years; (if available)
7. Affidavit on Rs.100 stamp paper / e-stamp paper that:
  - a. the bidding company is neither blacklisted nor suspended by any National / International, including Provincial and Federal Government.
  - b. the bidder has submitted the correct and complete information along with the bid/offer. If any document/information is found forged/engineered /fake/bogus at any stage, the bidder may be declared as Blacklisted in accordance with law and the bid security, performance guarantee and payment, if any may be forfeited.
8. Valid documentary evidence in support of evaluation and qualification criteria.

Bidder(s) must ensure that the following documents are enclosed with the **Financial Proposal**

1. Bid Security of required amount. Bid security of a lesser amount will render the bid as rejected.
2. Bid form(s) duly filled in all respect clearly quote the price.
3. Once again note that bidder must ensure that the Bid Form is filled in all respect, without any confusion, there should not be any over-writing, double writing, crossed, additional conditions and rates are quoted clearly in digits as well as in words.
4. Bidder(s) must understand that all payments / transaction shall be made in Pakistani Rupees (PKR) only.

#### **CLARIFICATION / QUERIES ON TENDERING DOCUMENTS**

---

Any interested bidder requiring any clarification(s) of the bidding documents may notify to SIEHS in writing via email address provided in the bid data sheet duly referring the title of the tender in email subject. The concerned officer will respond in writing via email to any request for clarification within 03 calendar days, provided they are received at least five calendar days prior to the date of opening of bid. Clarification response (including an explanation of the query but without identifying the source of inquiry) will be posted on SIEHS website tender section).

#### **BID PRICE**

1. The price / bid offer quoted should be firm, final and clearly written / typed without any ambiguity on current petrol price.
2. The bid price should include all the government taxes, as per prevailing taxation rates of provincial / federal / local governments etc. (e.g., SST/GST, Income Tax, Withholding Tax etc.).
3. If there is no mention of taxes or calculation error, the offered/quoted price will be considered as inclusive of all prevailing taxes/duties. The benefit of exemption from or reduction in the

 <b>SINDH</b> <small>INTEGRATED EMERGENCY &amp; HEALTH SERVICES</small>	<b>SINDH INTEGRATED EMERGENCY AND HEALTH SERVICES</b> <b>TENDER DOCUMENTS</b>	<i>Refurbishment Works at various Stations &amp; Regional Office</i>
-------------------------------------------------------------------------------------------------------------------------------------------------------------	----------------------------------------------------------------------------------	----------------------------------------------------------------------

Income Tax / SST / GST or other taxes during the contract period shall be passed on to SIEHS.

4. The bidder shall deem to have obtained all related information as to the requirements thereto which may affect the bid offer / price if required.

### **VALIDITY OF BIDS**

Bids shall remain valid for ninety (90) days w.e.f. date of opening of Technical Proposals. The bids without or less than Ninety (90) days validity will be rejected.

### **LANGUAGE OF BIDS:**

The bid prepared by the bidder, as well as all correspondence and documents relating to the bid exchanged by the bidder and the SIEHS shall be in English. Supporting documents and printed literature furnished by the bidder may be in another language provided these are accompanied by an accurate translation of the relevant passages in English, in which case for purposes of interpretation of the bid, the translated version shall prevail.

### **BID SECURITY / EARNEST MONEY**

1. The bid must be accompanied by a bid security in shape of a DD/Pay Order of 2% of the total contract value (inclusive of taxes) in favor of "Sindh Integrated Emergency and Health Services" on account of Earnest Money/Bid Bond (refundable) valid for a period of 28 days beyond the bid validity date. For unsuccessful parties the earnest money will be refunded within a period one month after the finalization of successful bidder.
2. The bid security shall be attached with the Financial Proposal. No interest will be paid on bid security. Photocopy of the bid security shall be attached with the Technical Proposal after hiding the amount.
3. Any bid not accompanied by an acceptable bid security or the required amount shall be rejected by the SIEHS as non-responsive.
4. The bid security / earnest money of the unsuccessful bidders will be returned upon award of contract to the successful bidder or on expiry of validity of bid security whichever is earlier.
5. The bid security of the successful contractor will be returned only when the bidder furnishes the required Performance Security and signed relevant contract / agreement. The successful bidder can adjust the bid security towards performance guarantee, in this situation, the successful bidder shall submit the balance amount on account of performance guarantee.

## **ACCEPTANCE / REJECTION OF BID**

The bid shall be rejected if:

1. It is substantially non-responsive in a manner prescribed in this tender document.
2. It is against the Pakistani Laws, Rules, Regulations, Policies, Permits, Codes etc.
3. Bidder has conflict of interest with the SIEHS.
4. Bidder engages in corrupt or fraudulent practices in competing for Contract award.
5. Bidder tries to influence the bid evaluation / contract award.
6. Unsigned, incomplete, partial, ambiguous, conditional, alternative, late.
7. Any bidder encloses the financial bid within the technical bid, the same shall be rejected, as bids are invited according to the Single Stage – Two Envelope Procedure
8. Accompanied by vague and indefinite expression such as “subject to prior confirmation”, “subject to immediate acceptance” etc. will be treated as vague offers and rejected accordingly
9. Without verifiable proofs against the mandatory as well as general documentary, qualification and eligibility related requirements; or
10. Bidder fails to meet all the requirements of tender eligibility / qualification criteria
11. Bids submitted for partial / limited services / items (unless specified) in the bidding documents, in the format for quoting the rates / schedule of requirements / BoQ
12. Bid submitted with shorter bid validity period
13. Bidder fails to meet the minimum evaluation criteria requirements
14. Bid not accompanied by the Bid Security (Earnest Money) of required amount and form
15. Bidder refuses to accept the corrected Total Bid Amount / Price
16. The Bidder has been blacklisted by any public or private sector organization
17. Bidder has mentioned any financial implication(s) in the financial proposal that is in contradiction to this document and Government rules and regulations.

## **FORFEITURE OF BID SECURITY**

The bid security / earnest money will be forfeited / confiscated:

1. A bidder requests to withdraw his or its bid after opening but within the bid validity period
2. Successful bidder fails to furnish performance security
3. Successful bidder fails to sign the contract/agreement.

4. A bidder does not accept the correction of the quoted amount following the correction of arithmetic errors.
5. A bidder has been found black listed by any agency of Federal or Provincial Government.

### **CANCELLATION OF BIDDING PROCESS**

SIEHS Procurement committee:

1. May cancel the bidding process at any time prior to the acceptance of a bid or proposal.
2. May cancel any or reduce the scope of work mentioned in annexures
3. Shall incur no liability towards the bidders.
4. Shall intimate the cancellation of bidding process immediately and upload a notice on the company website followed by prompt return of bid security.
5. Shall, upon request by any of the bidders, communicate to such bidder, grounds for the cancellation of bidding process, but is not required to justify such grounds.

### **AMENDMENTS IN BIDDING DOCUMENT**

- a. At any time prior to the deadline for submission of bids, SIEHS may, for any reason, whether at its own initiative or in response to a clarification requested by a interested bidder, modify the bidding document by amendment in accordance with the SPP Rules 2010 (Amended 2022).
- b. All interested bidders that have downloaded the bidding documents from SIEHS website need to inform via email at '[procurement@siehs.org](mailto:procurement@siehs.org)' to register their email address so any amendments are notified by SIEHS staff. The amendments will be binding on the bidder. Email sent by the bidder should specify the tender number, tender title and the email id for correspondence.
- c. Any amendments thus issued shall form eternal part of the tender document. To offer bidders a reasonable timeframe for preparing revised bids, the SIEHS may at its discretion extend the deadline for submission of bids.

### **DEADLINE FOR SUBMISSION OF BID**

Bids must be submitted by dropping the sealed bid envelope in the tender box placed at the identified address (refer bid data sheet) no later than the time and date specified in the bid data sheet. Any claim against the bids received late shall not be considered at any stage. Bidders are advised at their own interest to take all precautionary measures for delivery of sealed bids in the tender box before the deadline for submission of bid.

 <b>SINDH</b> <small>INTEGRATED EMERGENCY &amp; HEALTH SERVICES</small>	<b>SINDH INTEGRATED EMERGENCY AND HEALTH SERVICES</b> <b>TENDER DOCUMENTS</b>	<i>Refurbishment Works at various Stations &amp; Regional Office</i>
-------------------------------------------------------------------------------------------------------------------------------------------------------------	----------------------------------------------------------------------------------	----------------------------------------------------------------------

Any bid received after the deadline for submission of bids prescribed by the SIEHS pursuant to bid data sheet & NIT will be rejected and returned unopened to the bidder.

### **PERIOD OF CONTRACT**

Based on the agreed timelines for execution and completion of the scope of work

### **SINGLE STAGE – TWO ENVELOPE PROCEDURE.**

1. Bid shall comprise a single package containing two separate envelopes. Each envelope shall contain separately the financial proposal and the technical proposal
2. Envelopes shall be marked as “FINANCIAL PROPOSAL” and TECHNICAL PROPOSAL” in bold and legible letters to avoid confusion
3. Initially, only the envelope marked “TECHNICAL PROPOSAL” shall be opened;
4. Envelope marked as “FINANCIAL PROPOSAL” shall be retained in the custody of SIEHS without being opened.
5. SIEHS shall evaluate the technical proposal in a manner prescribed in advance, without reference to the price and reject any proposal which does not conform to the specified requirements. No amendments in the technical proposal shall be permitted during the technical evaluation.
6. Financial proposals of technically qualified bids shall be opened publicly at a time, date and venue announced and communicated to the bidders in advance.
7. Financial proposal of bids found technically non-responsive shall be returned un-opened to the respective bidders.
8. The technical bid should contain all the relevant information and desired enclosures in the prescribed format. The financial Bid should contain only Financial Proposal and Bid Security. In case, any bidder encloses the financial bid within the technical bid, the same shall be rejected summarily.
9. Technical / Financial Bids should be submitted in sealed envelope. The inner and outer envelopes shall:
  - i. Be addressed to the SIEHS at the address given in the bidding documents
  - ii. Opened or e-mailed or faxed or telexed bids will not be accepted.

- iii. Any bid received by the SIEHS after the date and time of tender opening will be rejected and returned as unopened to sender / bidder.
- iv. Bids qualified by such vague and indefinite expression such as “subject to prior confirmation”, “subject to immediate acceptance” etc. will be treated as vague offers and rejected accordingly.
- v. Bidder shall comply with all Pakistani Laws, permits, codes and regulation applicable to the bidder’s performance of services. Bid against the Government Rules and Policies, Conditional Bid, Ambiguous Bid or incomplete Bid and Bid without Bid Security will be rejected. No supplementary or revised offer after the opening of bids shall be entertained.
- vi. In case of announcement of Public Holiday or any unfavorable circumstance, the bids will be opened on next working day. Other terms and conditions, venue and time for drop and opening will remain unchanged.
- vii. In case of discrepancies between the Notice Inviting Tender (NIT) and the Bidding Documents, the Bidding Documents shall take precedence.
- viii. No bid may be withdrawn in the interval between the deadline for submission of bids and the expiration of the bid validity period specified in the bid document.

## **POST BID SUBMISSION**

---

### **OPENING OF BID**

1. The date for opening of bids and the last date for the submission of bids shall be as given in the bidding documents and in the tender advertisement. In case, the two dates are different, the date and time, given in the bidding documents shall apply.
2. In case of the date of opening of tender declared as Public Holiday by the Government of Sindh or Federal Government or non-working day due to any reason, the next official working day shall be deemed to be the date for submission and opening of tenders/bids/offers, accordingly. The time and venue shall remain same.
3. All bids shall be opened publicly in the presence of all the bidders, or their representatives, who may choose to be present in person, at the time and place announced in the invitation to bid.

4. The Procurement committee shall read aloud the name of the bidder and total amount of each bid, and of any alternative bids if they have been permitted, shall be read aloud and recorded when opened.
5. All bidders in attendance may sign an attendance sheet.
6. All bids submitted after the time prescribed as well as those not opened and read out at bid opening, due to any procedural flaw, shall not be considered, and shall be returned without being opened.
7. The envelope marked Financial Proposal shall be retained unopened in the custody of SIEHS.
8. After the evaluation and approval of the technical proposal, the Financial Proposals shall be opened of the technically accepted / qualified bids having the minimum qualifying points / marks of 70% or more, at a time, date and venue announced and communicated to the bidders in advance.
9. The opening of Financial Proposal may be extended by the SIEHS, however, same shall be informed through email by SIEHS, but the bids shall be opened within the bid validity period.

#### **EVALUATION OF BIDS**

1. All bids shall be evaluated in accordance with the evaluation criteria and other terms and conditions set forth in this tender document.
2. A bid once opened in accordance with the prescribed procedure shall be subject to only those rules, regulations and policies that are in force at the time of issuance of notice for invitation of bids.
3. The Committee may seek the clarification from the bidder in writing or oral as the case may be, in case of committee deemed fit, however any clarification shall not be changing the sanctity of original bid.
4. The Bids/Offer shall be evaluated conformity the requirements of terms & conditions of the bidding document based on the record / documentary evidence submitted by the bidder.

#### **ANNOUNCEMENT OF BID EVALUATION REPORT**

1. Procurement committee shall announce the results of bid evaluation in the form of a report giving reasons for acceptance or rejection of bids.



 <b>SINDH</b> <small>HEALTH SERVICES</small>	<b>SINDH INTEGRATED EMERGENCY AND HEALTH SERVICES</b> <b>TENDER DOCUMENTS</b>	<i>Refurbishment Works at various Stations &amp; Regional Office</i>
----------------------------------------------------------------------------------------------------------------------------------	----------------------------------------------------------------------------------	----------------------------------------------------------------------

- The report shall be uploaded on SIEHS website and intimated to all the bidders through email at least three (3) working days prior to the award of contract.

### **BID EVALUATION CRITERIA - 100 Marks**

THE BIDS SHALL BE EVALUATED ON MOST ADVANTAGEOUS BID BASIS. The bidder which attains the highest weighted technical and financial score according to the following criteria shall be selected.

- The Bids shall be evaluated on location basis reflected in the bid form / price schedule.
- The following merit point system for weighing evaluation factors / criteria will be applied for technical proposals.
- Bidders achieving minimum 70% overall points / marks will be considered only for further process. Documentary evidence must be attached in support of your claim.
- Only those Financial Proposals will be announced / considered which were technically qualified by the Committee.

<b>Annexure - A: Technical Evaluation Criteria (60% Weightage)</b>		
S. No.	Description	Marks
1	<b>Establishment / Registration of Firm</b>	15
	i. 10 x Years & above = 15 points	
	ii. 6 to 9 Years = 10 points	
	iii. more than 2 years less than 05 years = 05 points	
	iv. Less than 2 years = 0 points (Documentary evidence must be attached, e.g., PEC along with NTN Registration, STRN etc..)	
2	<b>Specific Experience (not outsourced)</b>	10
	Completed projects of similar nature at least 3 not less than Rs. 3 million project cost.	
	i. Minimum 2 Points for 1 x project. (02) ii. For each additional project above 1 x project, 2 points for each project subject to a maximum of 10 points. (10) (Certificates/work orders/ contracts/ from departments / clients should be attached for claiming points)	
3	<b>General Experience of working outside Karachi</b>	15
	Existing General Projects other than specific already completed by firm not less than the Rs. 5 Million project cost. (Certificates from departments / clients should be attached for claiming points)	
4	<b>Current / on-going Projects.</b>	20
	Maximum 3 x projects having a combine worth of Rs. 5 million or more will be considered for this category. (Certificates from departments / clients should be attached for claiming points)	

(Please note that only 3 projects will be considered in this category)		
<b>Note:</b> Firms must obtain 70% points to qualify for opening of financial bids as detailed in the above table.		
<b>Annexure – B: Commercial Evaluation Criteria (40% Weightage)</b>		
S. No.	Description	Marks
1	Least Quoted Price	10
2	Payment Terms: 45 Days Credit (15 Marks)	15
	Payment after completion Job (10 Marks)	
	Combination of Advance & Credit (5 Marks) Advance Payment with submission of bank guarantee/DD etc.	
3	Credit & Debit Transactions as per Bank Statement for last 1 year Evaluation Requirement	15
i.	10 Million or above = 15 points	
ii.	Up to 5 Million = 10 points	
iii.	1 Million or below 5 Million = 05 points	

Qualified bidder will require 70% marks in technical criteria to qualify for financial evaluation.

For the purposes of determining the best advantageous bid (amongst qualified bidders), factors such as price, payment terms, delivery timelines, previous performances, previous experience, OEM authorization, quality assurance, expertise and such other details may be considering with SIEHS having the discretion to decide accordingly.

#### **CLARIFICATIONS / CORRECTIONS OF BID**

To assist in the examination, evaluation and comparison of the bids the committee at its discretion may ask the bidder for a clarification of its bid. The request for clarification and the response will be in writing via email and no change in the price or substance of the bid will be permitted.

Arithmetical errors will be rectified on the following basis:

1. If there is a discrepancy between unit price and total price that is obtained by the multiplying the unit price and quantity, the unit price shall prevail and total price shall be corrected. If there is a discrepancy between the words and figures the amount in words shall prevail. If there is a mistake in addition / totaling that can be corrected.
2. If the bidder does not accept the corrected amount of bid, his bid will be rejected and his bid security will be forfeited.

#### **PERFORMANCE SECURITY**

The Successful bidder shall submit the Performance Security / Guarantee in the amount specified in the Bid Data Sheet in the shape of Pay Order or Demand Draft or a Bank Guarantee in favor of SIEHS issued by a scheduled bank in Pakistan valid for a period of thirty (30) days beyond the date of completion / expiry of the contract. No interest will be paid on Performance security.

## **REFUND OF PERFORMANCE SECURITY**

The Performance Security / Guarantee shall be returned after expiry of contract and settlement of all claims. This amount will be returned to the supplier after satisfactory completion note from SIEHS.

## **FORFEITURE OF PERFORMANCE SECURITY**

1. In the event of failure to provide items/services as per Contract Agreement / Work Order within the stipulated period, the performance security may be forfeited.
2. In that event, acquiring of the said services may be taken from the next lowest bidder vide the same work order at bidder's risk and cost without any farther reference, so that the loss incurred would be recoverable from the Performance Security of the said bidder or from any sum due of which may become due to the bidder.
3. If any equipment / instrument or property of SIEHS or its representative / landlord / donor/ is damaged by the representative of approved firm, cost of the same will be deducted from the performance security money / pending bills of the bidder.

## **APPLICABLE LAW**

The Contract.Agreement shall be governed by the Laws of Pakistan and the Courts of Karachi - Pakistan shall have exclusive jurisdiction.

## **ARBITRATION**

Any difference or dispute or liability of whatsoever nature arising out of the contract or in any way relating to the contract or to its construction or fulfillment should be settled as far as possible, amicably between the SIEHS and the bidder's company. Should the parties fail to come to an amicable settlement the same shall be referred to the award of Arbitrators to be nominated one each by the SIEHS and the bidder company within fifteen (15) days of notice from either side or in the case of the said Arbitrators not agreeing, then to the award of an Umpire to be appointed by the Arbitrators in writing prior to proceeding with the arbitration. The decision of the Arbitrators or the Umpire, as the case may be, shall be final and binding on both the parties. The arbitration shall take place at Karachi, under Pakistani Law of Arbitration.

## **RIGHT TO VARY QUANTITIES AND SPLIT ORDER**

SIEHS reserves the right to increase and/or decrease the scope of work i.e. reduce number of locations or addition of new locations originally specified in the Format for Quoting the Rates / Schedule of Requirements however the successful bidder agrees without any change in unit price or other terms and conditions during the contract/agreement period for the additional locations within duration of contract/agreement.

## **REDRESSAL OF GRIEVANCES BY THE PROCURING AGENCY**

Redressal of Grievances & settlement of dispute will be as per Rule 30 & 31 of SPPRA Rule-2010 (Amended 2022).

## **COST OF BIDDING**

The bidder shall bear all costs associated with the preparation and submission of its bid, while SIEHS in no case shall be responsible or liable for those costs, regardless of the conduct or outcome of the bidding process.

## **COST OF STAMP DUTY**

0.35% of the contract/agreement value (incl. of tax) or notified by the Government of Sindh, will be paid by successful bidder as stamp duty prior entered into signing the contract/agreement.

## **THIRD PARTY SERVICES**

If required, will be the responsibility of the bidder. Sindh Integrated Emergency and Health Services will not be a party to any such agreement between the bidder and any of its vendors, sub-contractor, if so.

## **CANCELLATION OF CONTRACT**

If the successful bidder fails to provide the satisfactory services, the SIEHS shall be entitled with the option to cancel the contract/agreement and recover the damages besides forfeiture of Performance Guarantee. SIEHS shall not be liable to any risks and costs whatsoever in consequence of such cancellation of the contract.

## **PATENT DISCLAIMER**

The bidder indemnifies SIEHS from any disputes arising from the issues of copied design, work of art, use of restricted intellectual property / rights etc. SIEHS in no circumstance would be held liable or any disputes. Any financial, reputational or other liability arising due to the provided service or goods will be the responsibility of the bidder. SIEHS reserves the right to compensation in case of any adverse impact due to breach of patents or unlawful use of intellectual property, idea or work of art.

## **AWARD OF CONTRACT**

The Draft contract agreement along with the terms and condition is attached with this bidding documents. However, the final contract agreement shall be finalized with the mutual consent of SIEHS and the successful bidder.

## NOTIFICATION OF AWARD

Prior to the expiration of the period of bid validity, the SIEHS will notify the successful bidder in writing by issuing a letter of acceptance, that its bid has been accepted. The notification of award will constitute the formation of the contract. Upon the successful bidder's furnishing of the performance security, SIEHS will promptly notify each unsuccessful Bidder(s) and will discharge its bid security.

## SIGNING OF CONTRACT

SIEHS will send the successful bidder the draft contract agreement, incorporating all term & conditions between the parties. Within fifteen (15) days of receipt of the Contract Form, the successful bidder shall sign the contract and return it to SIEHS. The successful bidder shall furnish the performance security in accordance with the conditions of contract. Failure of the successful bidder to comply with the requirement shall constitute sufficient grounds for the annulment of the award and forfeiture of the bid security.

## TENDER TIMELINES

The estimated timing for the key milestones in the tender process is as follows:

Steps	Time line	Start Date	End Date
Tender advertisement published in the newspapers & Tender uploaded on SIEHS website		8 <sup>th</sup> February, 2023 - 24 <sup>th</sup> February, 2023	
Pre bid meeting at SIEHS head office Plot No. 43-15/K, Block 6, P.E.C.H.S, Karachi, Pakistan.	10:30am	15 <sup>th</sup> February, 2023	
Addressing of queries from bidders		17 <sup>th</sup> February, 2023	
Bid submission by vendors	Maximum by 9:30 am	24 <sup>th</sup> February, 2023	
Bid opening by Committee	10:00 am	24 <sup>th</sup> February, 2023	
Analysis of bid along with clarification of queries if any		24 <sup>th</sup> February, 2023 - 13 <sup>th</sup> March, 2023	
Internal approvals and project award with Letter of intent		16 <sup>th</sup> March, 2023 - 30 <sup>th</sup> March, 2023	

\*Timeline is estimated and may change based on technical complexities. For any changes of dates, bidders will be informed via email on their provided correspondence email ID.

## BID DATA SHEET

Company name	Sindh Integrated Emergency & Health Services (SIEHS)
Bid submission	Bids to be submitted in the Tender box placed at SIEHS head office, Monday – Friday 9:00 am to 5:00 pm  Plot No. 43-15/K, Block 6, P.E.C.H.S, Karachi, Pakistan.
Procurement Focal persons	Mr. Muhammad Noor Ali Mr. Azeem Hassan Khan Yousuf Zai
Email address	<a href="mailto:procurement@siehs.org">procurement@siehs.org</a>
Contact number	021-111-111-823, Ext 2510,2006
Pricing mechanism	The price shall be fixed during the contract period.
Bid security	Amount of bid security should be 2% of the total bid price
Bid validity	Bid validity period shall be 90 days after opening of technical proposal
Deadline for bid submission	24 <sup>th</sup> February, 2023 at 9:30 am
Date, Time and Place of Bid opening of technical / commercial proposal	24 <sup>th</sup> February, 2023 at 9:30 am at SIEHS Head office (address above)
Performance Security	5% of the total value of the contract as per agreed timelines for delivery of supplies/goods after satisfactory inspection and acceptance. This amount will be returned to the supplier upon satisfactory report received from SIEHS.

**VENDOR INFORMATION FORM**

Name of the Company			
Company NTN		Date of establishment	
Company GST		Provincial sales tax numbers (SST)	
Office address			
Name of the authorized contact person			
Email address for correspondence			
Telephone Number (Extension if any)		Mobile Number	
Signature of authorized person			
Is any of your relatives / friends working in / for SIEHS?	<input type="checkbox"/> YES	If YES, please provide details:	
	<input type="checkbox"/> NO		
<p><b><u>Declaration:</u></b></p> <p>I / We hereby declare that all information and documentation provided are true and correct to the best of my / our knowledge. In the event of any information found false or incorrect, the registration with SIEHS and the placed purchase order will be cancelled</p>		Company stamp if available	

**SPRA INTEGRITY PACT (To be signed with the successful bidder to whom contract is awarded)**

**BID FORM / PRICE SCHEDULE**

(To be submitted on Official Company Letterhead duly signed & stamped)

**Financial proposal**

**ANNEXURE "A" SIEHS NETWORK – KARACHI**

DESCRIPTION	UoM	HEAD OFFICE - PECHS	SATELLITE OFFICE - PECHS	NORTH NAZIMABAD	BIN QASIM	PECHS	JOHAR	KORANGI
	Sq.ft.	PKR 0	PKR 0	PKR 0	PKR 0	PKR 0	PKR 0	PKR 0
	Sq.ft.	PKR 0	PKR 0	PKR 0	PKR 0	PKR 0	PKR 0	PKR 0

**ANNEXURE "B" SIEHS NETWORK – OTHER THAN KARACHI**

DESCRIPTION	UoM	THATTA	SAJAWAL	MIRPUR BATHORO	SAKRO
	Sq.ft.	PKR 0	PKR 0	PKR 0	PKR 0
	Sq.ft.	PKR 0	PKR 0	PKR 0	PKR 0
	Nos.	PKR 0	PKR 0	PKR 0	PKR 0

**ANNEXURE "C", "D", ... SIEHS – REGIONAL OFFICE & STATIONS**

DESCRIPTION	UoM	Qty	Rate	Amount
	Sq.ft.		PKR 0	PKR 0
	Nos.		PKR 0	PKR 0

Total price in words \_\_\_\_\_

**ANNEXURE "I" & "J" SIGN BOARD SKIN REPLACEMENT OF SIEHS NETWORK STATIONS**

DESCRIPTION	UoM	Rate	TOTAL
Repair of structure if needed, Providing and applying of 02 coats of red oxide make Berger/ICI paint to the internal structure of signboards by removing the rust and paint through sand papers and grinding. Complete in all respect	Rft		
This includes the removing and dismantling of old skin and installation of new skin, complete in all respect. Description: 04 color printing on 400 GSM Vinyl Panaflex. Initial Artwork attached for reference.	Sq.ft		



**ANNEXURE “K” & “L” SUPPLY & INSTALLATION OF NEW SIGN BOARD OF SIEHS**

DESCRIPTION	UoM	Rate	TOTAL
Supply & Installation of Structure 1" x 1" MS Square pipe of 18 gauge Application of 02 coats of red oxide make Berger/ICI paint to the internal structure of signboards	Rft		
This includes installation of new skin, complete with all respect Description: 04 color printing on 400 GSM Vinyl Panaflex. Initial Artwork attached for reference.	Sq.ft		

- The above mentioned rates/prices should be inclusive of all applicable taxes (WHT/SRB/GST)/duties/delivery charges etc.
- Main equipment with standard accessories including comprehensive warranty as per manufacturer recommendations.
- INCOTERM is DDP, Karachi, Pakistan and delivery at the designated delivery locations across Sindh province.
- Above prices should inclusive of all requirements mentioned scope of work.
- Validity of Offer/Proposal: 90 days from date effective of bid opening
- The above rates/prices should inclusive of all applicable taxes/duties/delivery charges etc.
- Payment terms (in calendar days): \_\_\_\_\_
- Delivery time (in calendar days): \_\_\_\_\_
- Signature with date: \_\_\_\_\_

Name: \_\_\_\_\_

CNIC: \_\_\_\_\_

Designation: \_\_\_\_\_

Company: \_\_\_\_\_

Stamp: \_\_\_\_\_

Submission of the bid by the bidder reflects the acceptance of the SIEHS tender terms and conditions.

## **GENERAL TERMS AND CONDITIONS OF CONTRACT**

---

### **ARTICLE 1**

#### **DEFINITIONS**

The following definitions shall apply to this Agreement except where the context otherwise requires. Words importing the singular include the plural and vice versa where the context requires.

1.1 **COMPANY**

Company shall mean Sindh Integrated Emergency and Health Services

1.2 **COMPANY REPRESENTATIVE**

Company Representative shall mean any person nominated to coordinate and deal with the Supplier / Service Provider or with Supplier's / Service Provider's Organization on behalf of the Company. The terms Requestor or End user or Business Unit where used in this Agreement shall have the same meaning as the Company Representative.

1.3 **SUPPLIER / SERVICE PROVIDER**

Supplier / Service Provider shall mean the person or Company identified in this Agreement or the person or the Company identified in the Purchase Order as the Supplier of Goods / Service. Where the term "Seller" or "Vendor" or "Contactor" appear they shall be taken to mean Supplier / Service Provider.

1.4 **SUPPLIER / SERVICE PROVIDER'S ORGANISATION**

Supplier / Service Provider's Organization shall mean subsidiaries and/or any other person or Company having an Agreement directly or indirectly with the supplier / service provider for the supply of Goods / Services.

1.5 **AGREEMENT OR THE AGREEMENT**

Agreement / The Agreement means this agreement.

1.6 **GOODS**

Goods mean the material and equipment to be supplied by the Supplier or Supplier's Organization as specified in **Annexure B** and/or the Purchase Order.

1.7 **SERVICES**

Services shall mean the services to be provided by and execution of work to be done by the Service Provider as specified in **Annexure B** and/or the Purchase Order.

1.8 **PURCHASE ORDER**

Purchase Order means an order to purchase Goods and Services from the Supplier / Service Provider or Supplier's / Service Provider's Organization placed by the Company as and when required.

1.9 **INSPECTION**

Inspection shall mean Inspection by the Company's Representative of the Goods supplied / Service provided

1.10 **DELIVERY**

Delivery shall mean the point or location(s) where the Company takes possession of the Goods and Services or a part of the Goods and Services.

1.11 **CONFIDENTIAL INFORMATION**

Confidential Information means all oral, electronic, and written information and material, in tangible and intangible format (including, without limitation, financial information, irrespective of the form of communication), which whether designated as "Confidential" or not is considered as confidential.

1.12 **LAW**

Law means any applicable federal, state, or local Law, regulation, rules, or ordinance enforced in Pakistan.

**ARTICLE 2**

**SCOPE OF WORK**

2.1 The Supplier / Service Provider shall supply the goods / services according to the specification and description as given in **Annexure B**.

**ARTICLE 3**

**BUSINESS INTEGRITY**

3.1 The Supplier / Service Provider shall act in accordance with the provisions of this Agreement, rules and policies of the Company as communicated and:

- a. shall ensure that the goods / services supplied are as per specifications and free from all defects.
- b. should comply with any conditions or warranties provided for by law.

**ARTICLE 4**

**CONTRACT PRICE**

4.1 In full consideration of the Supply of Goods / Service provided and of the fulfillment of other obligations under the Agreement, the Company shall, subject to the provisions of the Agreement, pay or cause to be paid to Supplier / Service Provider the contract price of the goods / services in accordance with the provisions of the **Annexure C**.

4.3 The Parties shall defend, indemnify and hold harmless each other from any liability resulting failure to comply with the reporting or other procedural requirements with respect to their payment.

**ARTICLE 5**

**TERMS OF PAYMENT**

- 5.1 In consideration of goods / services supplied / provided as per specifications and verified by the relevant department, the Company will make payment to the Supplier / Service Provider mentioned in **Annexure C**.
  
- 5.2 Contract price as specified in **Annexure C** of the Agreement shall remain unchanged during the term of this Agreement unless mutually agreed for any price revision formula / mechanism.
  
- 5.3 Except in case of discrepancies in the invoice submitted to the Company, payment to the Supplier / Service Provider shall be made after \_\_\_\_\_days of submission of invoice along with the delivery notes of goods / services completion certificate and written verification by the authorized representative of the Company. Invoices must be sent to Company User / Finance Department.

**ARTICLE 6**

**EXAMINATION & PERFORMANCE GUARANTEE**

- 6.1 Company or its designates shall have the right, at any time, to examine the goods supplied / services provided by the Supplier / Service Provider and their performance and to reject any items found to be not in accordance with the provisions of the Agreement or the specifications provided for supply of goods/ services for which the Company shall have sole discretion. No such examination or rejection shall relieve Supplier / Service Provider of any of its obligations and/or liabilities under the Agreement.
  
- 6.2 Any additional work to be performed or action to be taken by Supplier / Service provider resulting from examination or rejection as referred to in Article 6.1 shall not be regarded as a variation in Supplier / Service Provider's Work and shall be carried out at Supplier / Service Provider's own expense.

- 6.3 The rejected Goods will be replaced by the Supplier / Service Provider at its own cost. In case of failure on the part of the Supplier / Service Provider to replace the rejected equipment or material / service, the Company shall be entitled to deduct the entire cost of the rejected equipment or material from the Supplier's invoices which may be due for payment.
- 6.4 The service provider shall submit the Performance Security / Guarantee in the amount finalized through the tender T43-2023 in the shape of Pay Order or Demand Draft or a Bank Guarantee in favour of the Company issued by a scheduled bank in Pakistan. No interest will be paid on Performance security. The Performance Security / Guarantee shall be returned after expiry of contract and settlement of all claims. This amount will be returned to the supplier after satisfactory completion note from SIEHS.
- 6.5 In the event of failure to provide items/services as per contract / agreement / work order within the stipulated period, the performance security may be forfeited. In that event, acquiring of the said items/services may be taken from the next lowest bidder vide the same work order at contractor's risk and cost without any farther reference, so that the loss incurred would be recoverable from the Performance Security of the said Supplier / Service Provider or from any sum due of which may become due to the Supplier / Service Provider. If any equipment / instrument or property of the Company or its representative / landlord / donor/ is damaged by the representative of approved firm, cost of the same will be deducted from the performance security money / pending bills of the Supplier / Service Provider

## ARTICLE 7

## **INDEMNIFICATION**

- 7.1 Supplier / Service Provider hereby agrees and undertakes to indemnify and hold harmless to the Company, its members, subsidiaries, affiliates and joint venture partners, and their respective directors, officers, employees, and agents (“indemnified parties”) from and against all proceedings, costs, charges, obligations, liabilities, actions, claims, demands, causes of action, suits, damages, judgments, liens, penalties, and expenses including, without limitation, costs and legal fees which may be rendered against the Company
- 7.2 Without prejudice to the provision of Article 7.1, Supplier / Service Provider shall hold harmless and indemnify Company from and against all liens, attachments or claims by Supplier / Service Provider’s Representatives or persons alleging to be Supplier / Service Provider’s Representatives in connection with or arising out of Supplier / Service Provider’s Work. Company shall have the right to withhold the amount involved in the cost arising out of such lien, attachment or claim from any payment due to Supplier / Service Provider until removal of such lien, or attachment or settlement of such claim by Supplier / Service Provider.

## **ARTICLE 8**

### **WARRANTY**

- 8.1 The Supplier / Service Provider warrants and guarantees that the Goods / Services shall be of good standard and quality and shall comply in all respects with the agreed terms and scope of work, and are carried out by professionals qualified to perform in a timely and efficient manner and with all reasonable, care and skills.

8.2 In case of failure of the Supplier / Service Provider to rectify any defects in the Goods / Services as notified by the Company, the Company shall have the rights to deduct an amount equivalent to the value of goods / services from the Supplier / Service Provider's invoices which may be due for payment and/or terminate this Agreement without prejudice to other rights and remedies available to the Company.

**ARTICLE 9**

**TERM & TERMINATION**

9.1 This Agreement shall remain in full force and effect for a period of month effective from\_\_\_\_\_

9.2 Either party will have the option to terminate this Agreement by giving the other party **one (1) month** written notice in advance. If the Supplier / Service Provider exercises right under this provision in that case the Supplier / Service Provider shall comply with instructions of the Company in respect of the last date for rendering of the Services and till that date the Supplier / Service Provider shall be responsible to provide the Services.

9.3 Breach of any condition of any term of the Contract and directions issued by the Company as and when communicated to the Supplier / Service Provider, including the terms of **Annexure A** –If the Supplier / Service Provider shall not rectify the breach within the stipulated period or comply with the Obligations of the Supplier / Service Provider, the non-compliance of obligation of the Supplier / Service Provider shall give the Company right to terminate the agreement immediately without notice and without prejudice to any other rights which may be available to the Company.

9.4 In the event of the following, the Company shall have the right to immediately terminate this Agreement without assigning any further reason and without any notice in writing or otherwise.

- a. Supplier / Service Provider fails to comply with any provision of this Agreement, and or fails to comply with local / national laws and directions as and when communicated.
- b. Any default by Supplier / Service Provider, or in case the Company wishes to close the business at the Site or wants to use it for some other purposes.

9.5 If the Company shall elect to terminate this Agreement, all rights and obligations of Supplier / Service Provider shall terminate, except for Supplier / Service Provider's indemnification contained herein.

**ARTICLE 10**  
**FORCE MAJEURE**

- 10.1 Neither Party to this Agreement shall be liable for a delay in the execution of the Agreement or for any failure to fulfill any term of the Agreement if such delay or fulfillment has been caused by Force Majeure.
- 10.2 Force Majeure shall for the purpose of the Agreement mean an occurrence, which is beyond the control of the party affected and could not have been overcome or prevented by the exercise of reasonable diligence.
- 10.3 Without prejudice to the generality of Article 10.2 the events falling within Force Majeure include, subject to the conditions of the said Article 10.2, force of nature, lightning, earthquakes, floods, volcanoes, tidal waves, acts of war or public enemy, lockdown due to global pandemic and riots.
- 10.4 On the occurrence of any condition of Force Majeure the Party so affected shall immediately give verbal notice of such an event to the other Party and promptly confirm that notice by letter or email to point of contact.



## **ARTICLE 11**

### **ASSIGNMENT**

- 11.1 Supplier / Service Provider shall not be entitled to assign either in whole or in part any of its rights and obligations to sub-contractor under the Agreement without the prior written consent thereto of the Company.
- 11.2 Any Party to whom the rights and obligations under the Agreement are transferred to sub-contractor shall be bound by all the provisions of this Agreement. In addition to Article 11.1, Supplier / Service Provider shall procure as a condition precedent to any assignment that such assignment shall:
- a. Be executed in accordance with the provisions of this Agreement;
  - b. Be executed contemporaneously with a separate specific Agreement in favor of and for the benefit of the Company to the effect that the assignee accepts and agrees to be bound by the Agreement;
  - c. Be of no force or effect whatsoever unless and until the provisions of this Article 11 have been met, and an executed copy of the Agreement referred to in (b) above has been delivered to Company as a pre-condition to granting the required written consent.

## **ARTICLE 12**

### **COMPLIANCE WITH LAWS**

- 12.1 Supplier / Service Provider its employees and agents shall observe and abide by and shall ensure that its subcontractor shall observe and abide by all applicable laws, rules and regulations in Pakistan in connection with the Agreement including but not limited to those with respect to labor and insurance.
- 12.2 Supplier / Service Provider shall obtain without delay such authorizations, approvals, permits, consents and licenses which are necessary for it to perform the Agreement.
- 12.3 Supplier / Service Provider specifically undertakes that it shall not engage/hire/employ child labor / force labor in line with local labor law, while discharging its contractual duties hereunder.

- 12.4 Without prejudice to any other rights that the Company may have the right to terminate the Agreement or any Contract/Work Statement immediately upon notice in writing if the Supplier / Service Provider violate the provisions of this clause.

## **ARTICLE 13**

### **CONFIDENTIALITY**

---

- 13.1 In the performance of this Agreement, each Party may be exposed to Confidential Information of the other Party. No Party may disclose, reveal or use any such Confidential Information without, in each instance, obtaining the express prior written consent of the owner thereof. These obligations shall survive the expiration or termination of this Agreement.
- 13.2 Each Party acknowledges and agrees that the Confidential Information received by it from the other Party shall be kept confidential and shall not be disclosed or revealed to any other person other than those employees of such Party who needs to know the Confidential Information for the purpose of performing their respective obligations under this agreement and such employees shall take responsible steps to keep secrets.
- 13.3 The obligation of the Parties under Confidentiality Clause shall survive the termination/expiry /cancellation of this Agreement and remain valid and in full force even after the termination/expiry/cancellation of this Agreement.

## **ARTICLE 14**

### **WAIVER**

---

- 14.1 A waiver on the part of the Company or the Supplier / Service Provider of any breach of any term, provision or condition of the Agreement shall not constitute a precedent nor bind either party hereto to a waiver of any succeeding breach of the same of any other term, provision or condition of the Agreement.

## **ARTICLE 15**

### **APPLICABLE LAW**

---

- 15.1 The validity, applications, interpretation and implementation of the Agreement and any dispute, controversy and claims shall be governed by the laws of the Islamic Republic of Pakistan.

**ARTICLE 16**

**JURISDICTION**

---

16.1 The parties shall submit to the exclusive jurisdiction of the Karachi, Sindh Courts.

**ARTICLE 17**

**LANGUAGE**

---

17.1 For all aspects of the Agreement, the English language shall be the ruling language.

**ARTICLE 18**

**SAFETY**

18.1 Supplier / Service Provider shall take all necessary precautions in connection with the Agreement in order to ensure the safety and health of the personnel of Company, Supplier / Service Provider and third parties.

**ARTICLE 19**

**NOTICES**

19.1 All notices and other communications to be sent by either party to the other shall be duly communicated if delivered to the other party at its address referred to below or its receipt has been acknowledged in writing provided that either party may any time designate a different address to which notices and other communications are thenceforth to be sent.

Supplier / Service Provider at:

**Company Name:** \_\_\_\_\_

**Address:** \_\_\_\_\_

Company at:

**Sindh Integrated Emergency and Health Services**

**Plot # 43-15/K, Block 06, PECHS**

**Karachi.** \_\_\_\_\_

19.2 Any notice, documents or other writing required by the Agreement to be given or sent shall be deemed to have been duly given or sent if it is delivered in person to the addressee or, if sent by courier telex or facsimile or e-mail, when it is received by the addressee.

Name	Designations	Email Address	Contact Numbers

19.3 The address for delivery of notices and documents to the Company or the Supplier / Service Provider, as the case may be, pursuant to this Article shall be as stated in the Agreement or as may otherwise be notified from time to time in writing by one party to the other.

**ARTICLE 20**

**ALTERNATIVE SUPPLIER / SERVICE PROVIDER**

20.1 In the event of a default by the Supplier / Service Provider to fulfill any of the terms and conditions of the purchase order, the decision of the Company being conclusive and final in the matter, the Company shall have the absolute right to cancel the purchase order forthwith and stop receiving goods / services from the Supplier / Service Provider without incurring any liability financial or otherwise and shall be entitled to recover the cost of arranging alternate Supplies / Service Provider from other sources from the Supplier / Service Provider or adjust the same against the Supplier / Service Provider’s outstanding bills.

**ARTICLE 21**

**SURVIVAL**

21.1 Cancellation, expiration or earlier termination of this Agreement shall not relieve the Supplier / Service Provider from obligations being entered under this Agreement and Supplier / Service Provider shall be bound to complete the services or supplies of goods with the predetermined specifications and shall continue to be responsible for the warranties, remedies, promises of indemnity and confidentiality as decided.

## **ARTICLE 22**

### **ENTIRETY OF THIS AGREEMENT**

22.1 No prior stipulation, agreement of understanding, verbal or otherwise, of the parties or their agents with respect to the subject matter of this Agreement shall be valid or enforceable unless embodied in the provisions of this agreement.

The following annexures will form part of this agreement:

- Annexure A – General Terms and Conditions (already mentioned)
- Annexure B – Scope of Work & Delivery Schedule
- Annexure C – Price Schedule / Contract Price